

ANGLO – CHINESE SCHOOL (JUNIOR)

SEMESTRAL ASSESSMENT 1 – 2004

SCIENCE

PRIMARY THREE

BOOKLET A

SM

Name: _____ ()

Class: PRIMARY 3 ()

Date : Thursday 13th May 2004

30 Questions

60 marks

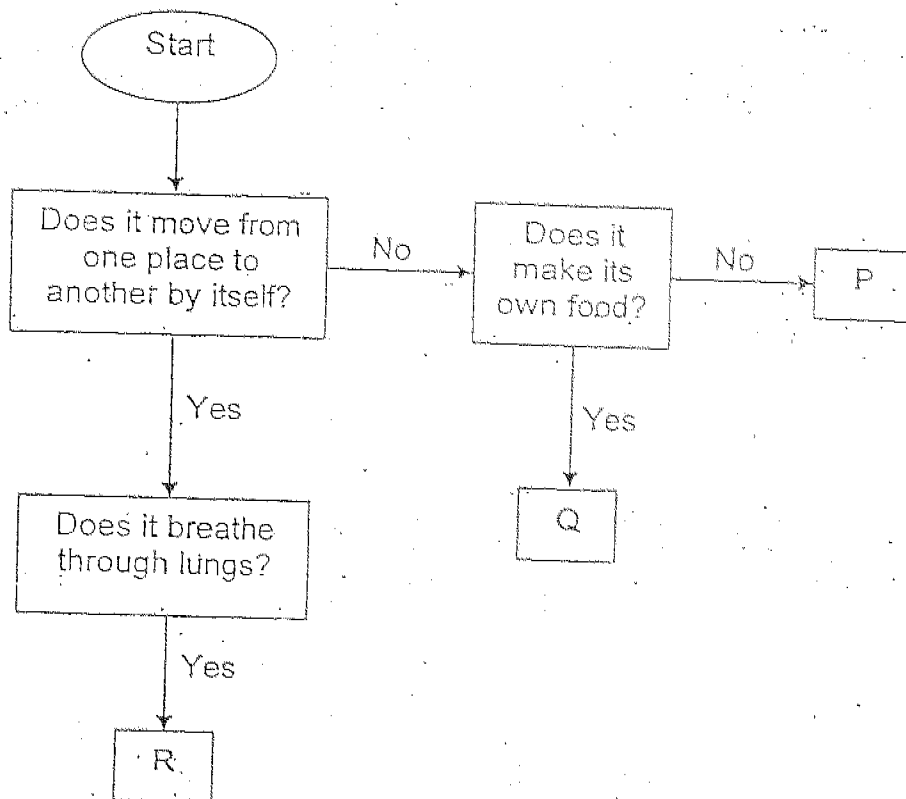
Total time for Booklets A and B : 1 hour and 30 minutes

**DO NOT OPEN THIS BOOKLET UNTIL YOU ARE TOLD TO DO SO.
FOLLOW ALL INSTRUCTIONS CAREFULLY.
ANSWER ALL QUESTIONS.**

Section A (30 x 2 m each)

For each question from 1 to 30, four options are given. One of them is the correct answer. Choose the correct option (1, 2, 3 or 4) and shade the correct oval on the Optical Answer Sheet (OAS).

1. Study the flow chart below.



Which of the following represent P and R?

| | P | R |
|-----|----------|----------|
| (1) | balsam | rabbit |
| (2) | balsam | goldfish |
| (3) | mushroom | rabbit |
| (4) | mushroom | goldfish |

2. Study the data below. It shows the length of a baby over time.

| Age in months | Length in cm |
|---------------|--------------|
| 3 | 50 cm |
| 6 | 52 cm |
| 9 | 54 cm |
| 12 | 57 cm |

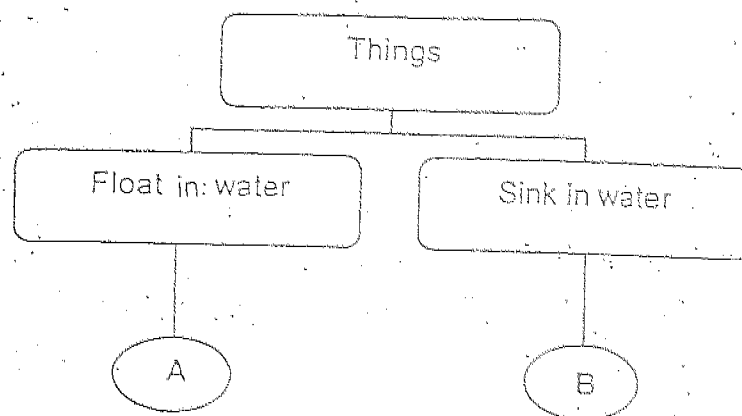
What can you conclude from the data above?

- (1) Living things grow.
- (2) Living things respond to changes.
- (3) Living things move by themselves.
- (4) Living things need air, food and water to live.

3. Study the table below. Which one of the following groups is INCORRECT?

| | | | | |
|-----|------------|----------|--------------|--------|
| (1) | hydrilla | squirrel | rose | ant |
| (2) | pencil | radio | shoe | table |
| (3) | hamster | coin | mimosa | spider |
| (4) | calculator | spoon | handkerchief | hat |

4. Study the classification table below.



What could A and B possibly be?

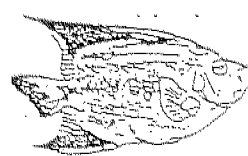
| | A | B |
|-----|------|------|
| (1) | ice | cork |
| (2) | coin | rock |
| (3) | coin | cork |
| (4) | ice | rock |

5. Which one of the animals breathes in a different way from the others?

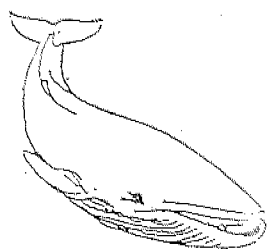
(1)



(2)



(3)



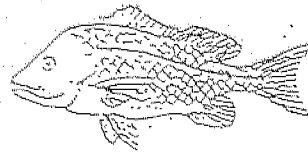
(4)



6. Compare Animals D and E shown below.



Animal D

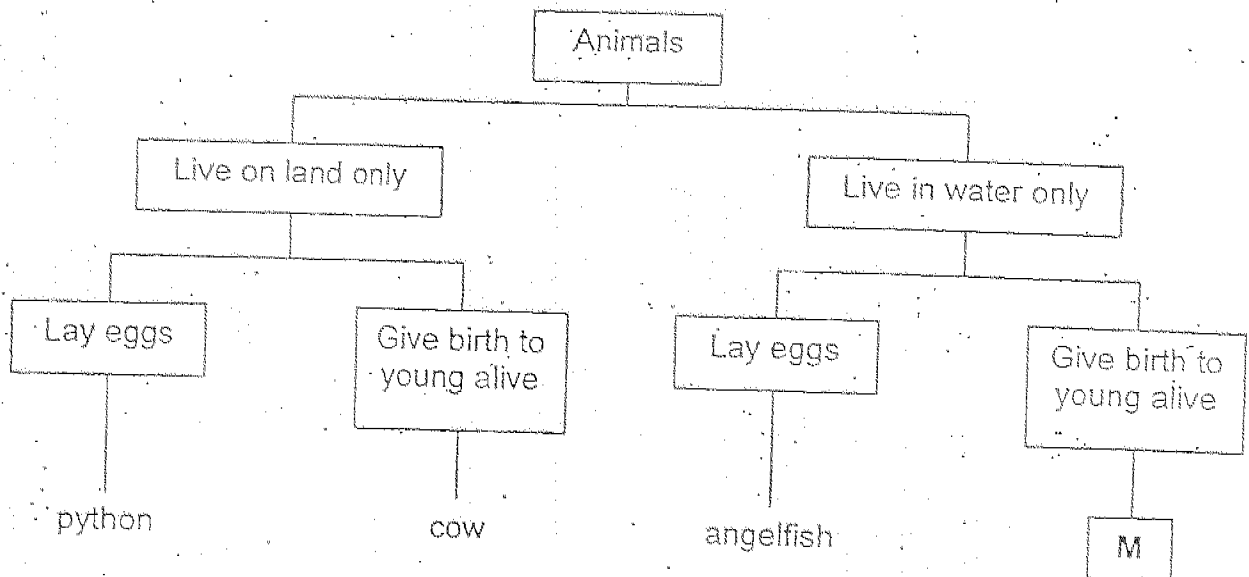


Animal E

Which of the following statements about them is INCORRECT?

- (1) Both lay eggs.
- (2) Both can swim.
- (3) Both have gill covers.
- (4) Both have scales as their outer-covering.

7. Look at the classification table below.

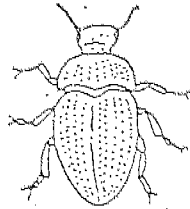


What could M be?

- (1) frog
- (2) guppy
- (3) goldfish
- (4) penguin

8. Which one of the following animals does not have three body parts?

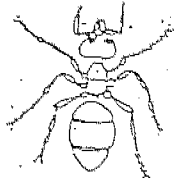
(1)



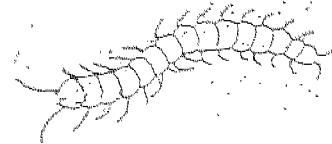
(2)



(3)



(4)



9. Which of the following are true about Bracket Fungus?

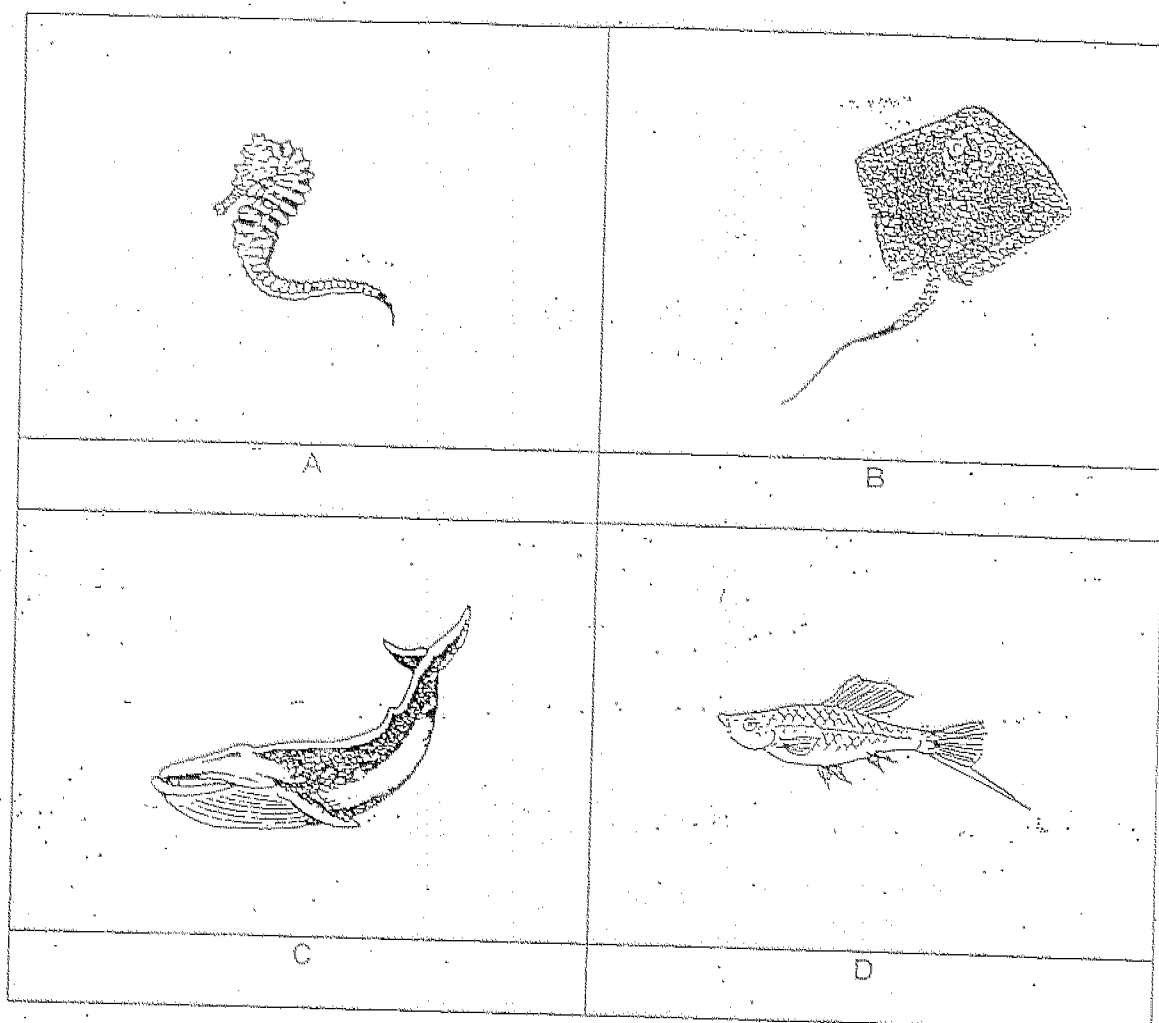
- A: It contains chlorophyll.
- B: It makes its own food.
- C: It reproduces by spores.
- D: It feeds on decaying matter.

- (1) A and B only
- (2) C and D only
- (3) A, B and C only
- (4) B, C and D only

10. Which of the following is CORRECT?

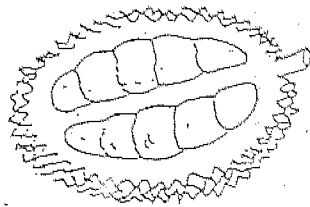
| | Animal | Group | Main Food Source |
|-----|------------|--------|------------------|
| (1) | hawk | bird | plants only |
| (2) | kingfisher | bird | plants only |
| (3) | shark | mammal | animals only |
| (4) | cheetah | mammal | animals only |

11. Which of the following animals are fish?

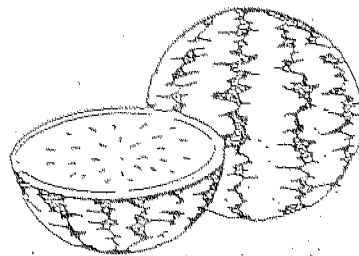


- (1) D only
- (2) B and C only
- (3) A, B and D only
- (4) A, C and D only

12. In what way is Fruit X similar to Fruit Y?



Fruit X

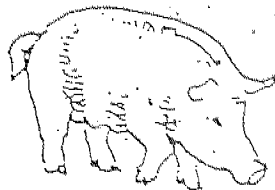


Fruit Y

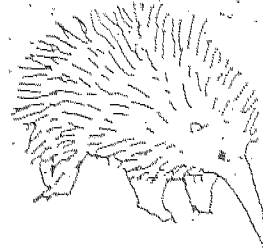
- (1) It is juicy.
- (2) It is fleshy.
- (3) It has one seed.
- (4) It has edible seeds.

13. Which one of the following animals does not feed its young with mother's milk?

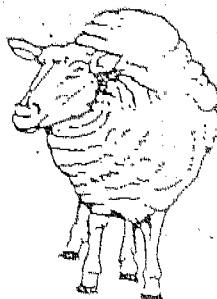
(1)



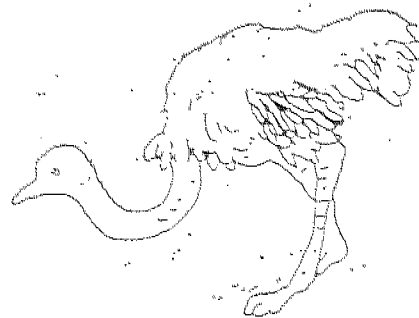
(2)



(3)



(4)



14. The table below shows two groups of animals.

| Group A | Group B |
|----------|--------------|
| bat | swordfish |
| eagle | electric eel |
| housefly | W |

What could W be?

- (1) giraffe
- (2) vulture
- (3) octopus
- (4) mosquito

15. Mrs Ong bought several items from various sections of a departmental store and grouped them into the table below.

| Stationery | Food |
|------------|---------|
| cucumber | seaweed |
| flour | glue |
| book | ruler |

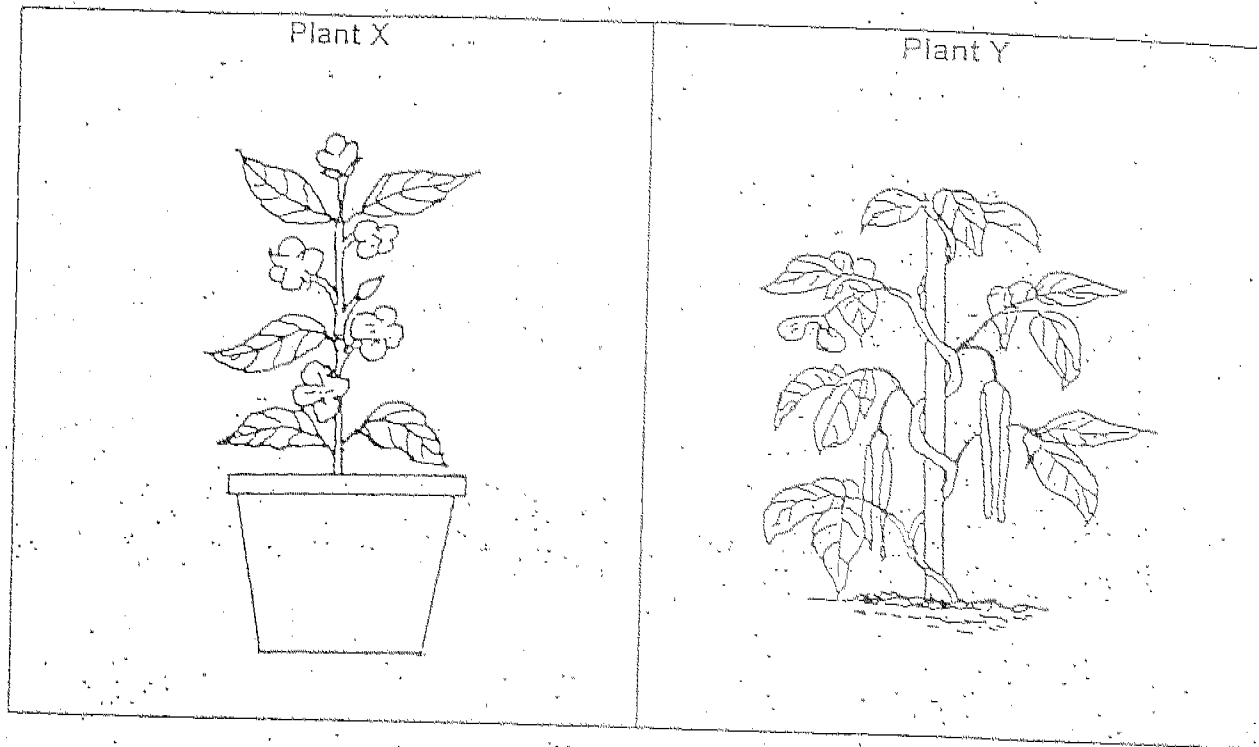
Which of the following items are correctly grouped?

- (1) book and glue
- (2) book and seaweed
- (3) cucumber and glue
- (4) cucumber and ruler

16. The table below shows the food and the plant part that we eat. Which of the following is CORRECT?

| | Food Item | Plant Part |
|-----|-----------|------------|
| (1) | tomato | stem |
| (2) | carrot | stem |
| (3) | coconut | leaf |
| (4) | lettuce | leaf |

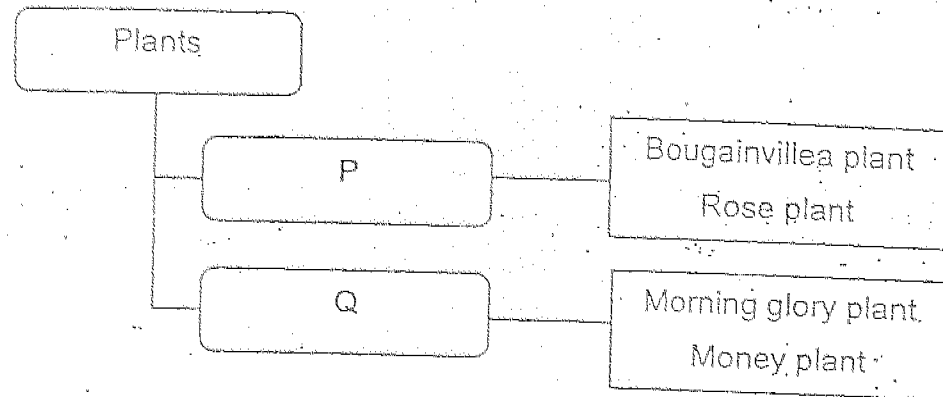
17. Study the two plants shown below.



In what way are Plant X and Plant Y different?

| | Plant X | Plant Y |
|-----|-------------------------------|-------------------------------|
| (1) | It has weak stem. | It has strong stem. |
| (2) | It has strong stem. | It has weak stem. |
| (3) | Its leaves have jagged edges. | Its leaves have lobed edges. |
| (4) | Its leaves have lobed edges. | Its leaves have entire edges. |

18. Study the classification table below.



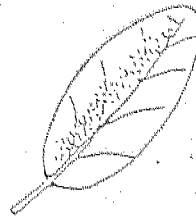
Which of the following could be P and Q?

| | P | Q |
|-----|--------------------|----------------------|
| (1) | Land plants | Water plants |
| (2) | Strong stems | Weak stems |
| (3) | Flowering plants | Non-flowering plants |
| (4) | Flowers in cluster | Flowers in singly |

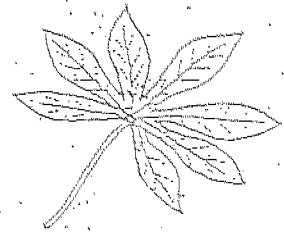
19. Study the leaves shown below.



Leaf X



Leaf Y

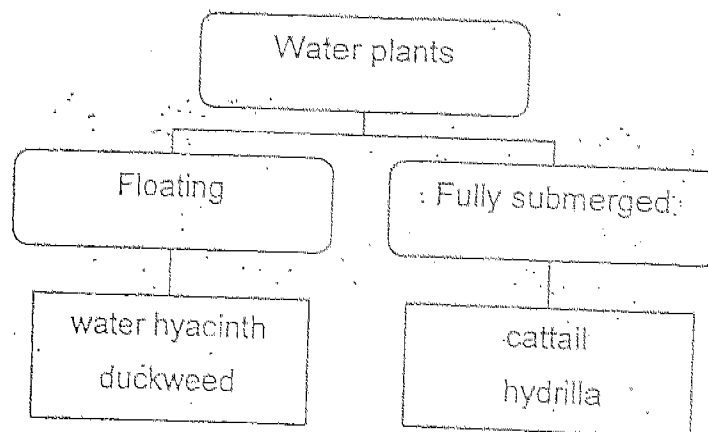


Leaf Z

Which of the following descriptions matches leaves X, Y and Z?

| | X | Y | Z |
|-----|-------------|-------------|-------------|
| (1) | jagged edge | entire edge | lobed edge |
| (2) | jagged edge | lobed edge | entire edge |
| (3) | entire edge | jagged edge | lobed edge |
| (4) | lobed edge | entire edge | jagged edge |

20. Study the classification table below.

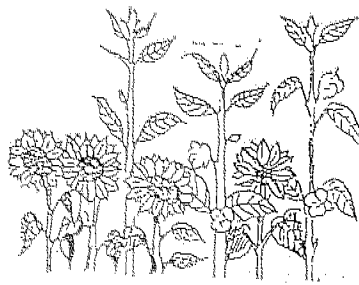


Which one of the following plants is wrongly grouped?

- (1) cattail
- (2) hydrilla
- (3) duckweed
- (4) water lettuce

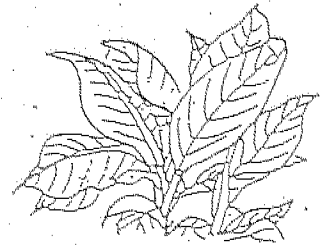
21. Which one of the following plants do not produce flowers?

(1)



sunflower plant

(2)



dumbcane plant

(3)



hibiscus plant

(4)



lantana plant

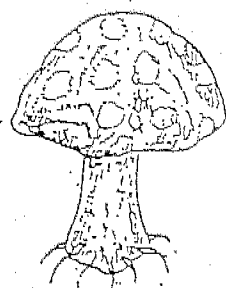
22. Study the table below.

| | Plant S | Plant T |
|----------------------|---------|---------|
| Grows on land | No | Yes |
| Reproduces by spores | No | Yes |

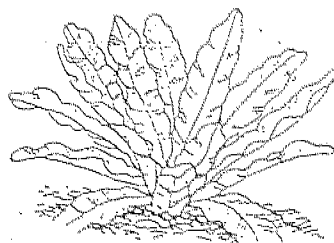
What could Plant S and Plant T be?

| | Plant S | Plant T |
|-----|---------------------|------------------|
| (1) | Flame of the forest | Rain tree |
| (2) | Arrowhead | Angsana tree |
| (3) | Water lily | Stag's horn fern |
| (4) | Rubber tree | Maidenhair fern |

23. Study the two plants shown below.



Plant Q

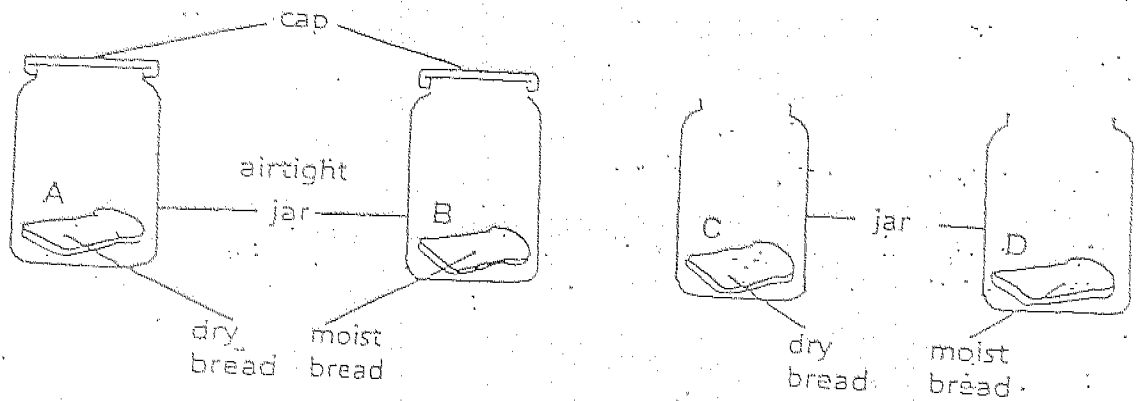


Plant R

In what way are the two plants similar?

- (1) Both have a cap.
- (2) Both reproduce by spores.
- (3) Both feed on decaying matter.
- (4) Both can make their own food.

24. Four pieces of bread, A, B, C and D are treated differently as shown in the diagram below. They were put on the shelf behind the classroom. Which slice of bread will turn mouldy the fastest?



- (1) A
- (2) B
- (3) C
- (4) D

25. Four different types of food P, Q, R and S were kept in the same place for a week. The table below shows the changes that were observed at the end of the week.

| Food | Condition | Changes in | |
|------|-----------|------------|-------|
| | | Colour | Smell |
| P | Moist | Yes | No |
| Q | Moist | Yes | Yes |
| R | Moist | No | No |
| S | Moist | No | Yes |

Which one of the following foods has fungus growing on them?

- (1) P and Q only
- (2) R and S only
- (3) P, R and S only
- (4) P, Q and S only

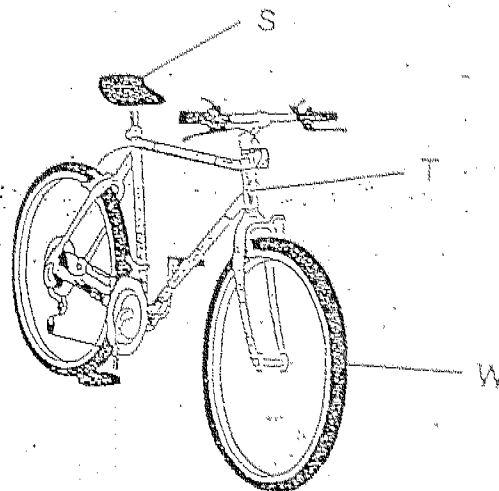
26. Ahmad conducted several tests on materials A, B, C and D. He recorded the results in the table below.

| | A | B | C | D |
|--------------------|-----|-----|-----|----|
| Waterproof | Yes | No | Yes | No |
| Break when dropped | Yes | Yes | No | No |

What material would be most suitable to make a basketball?

- (1) A
- (2) B
- (3) C
- (4) D

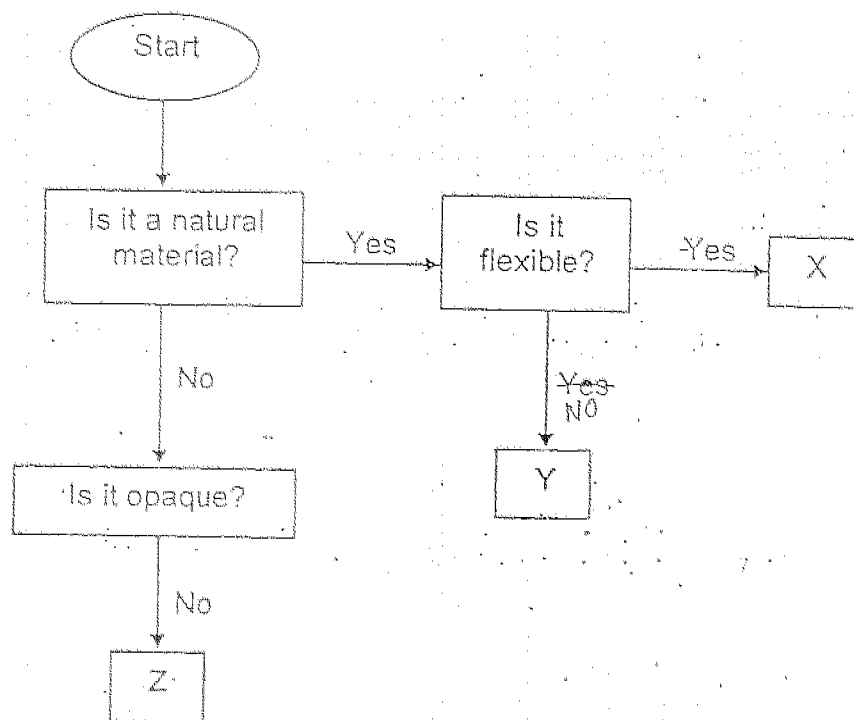
27. A bicycle is made of more than one material.



Which materials could S, T and W be?

| | S | T | W |
|-----|---------|--------|---------|
| (1) | rubber | rubber | plastic |
| (2) | plastic | metal | rubber |
| (3) | plastic | metal | plastic |
| (4) | metal | rubber | rubber |

28. Study the flow chart below.



Which of the following objects could be X and Z?

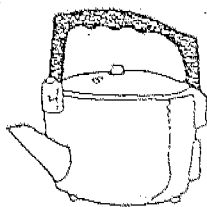
| | X | Z |
|-----|---------------|--------------|
| (1) | glass jar | windscreen |
| (2) | plastic ruler | wooden chair |
| (3) | tyre | food wrap |
| (4) | key | nylon rope |

29. Which one of the following materials comes from animals?

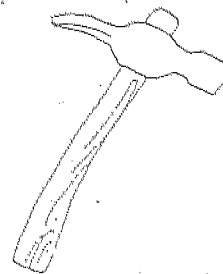
- (1) nylon
- (2) wood
- (3) cotton
- (4) leather

30. Which one of the following objects is made of only one material?

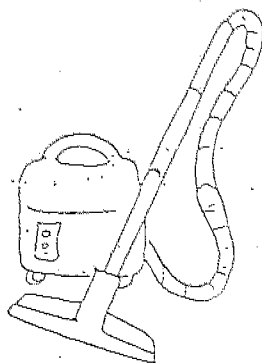
(1)



(2)



(3)



(4)



CK / LSK

A17

Subtotal

Section B (40 marks)

Write your answers to questions 31 to 46 in this booklet.
Fill in the blanks with the correct answers.

31. Ben planted some bean seeds in a container. After a few days, he noticed that the bean seeds had become seedlings.

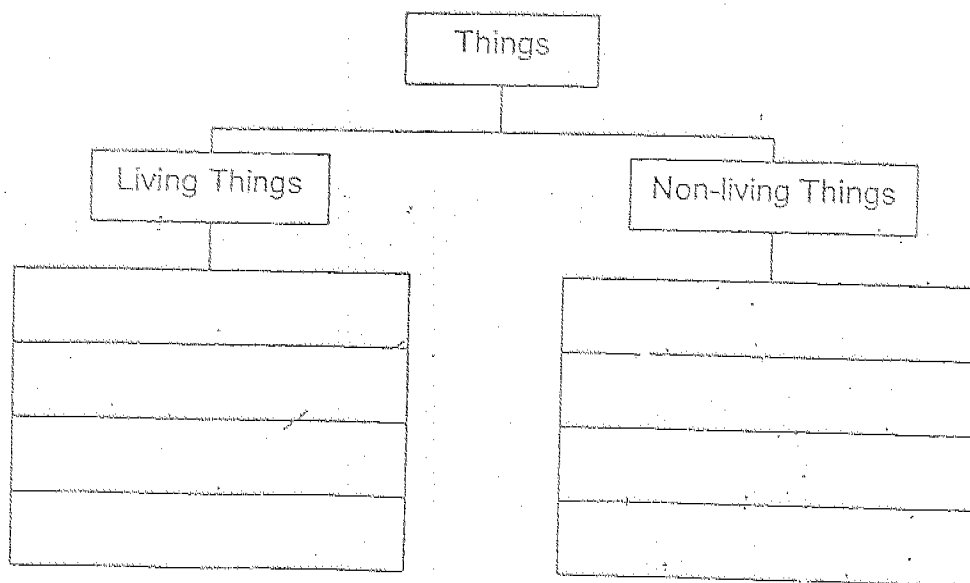
(a) This shows that living things can _____, [1]

- (b) Which one of the following shows the same characteristic as (a)?
Put a tick (✓) in the correct box. [1]

| | | |
|-------|---|--|
| (i) | A chick becoming a hen. | |
| (ii) | A boy drinking water. | |
| (iii) | A mimosa plant closing its leaves when touched. | |

32. Complete the classification table with the words given in the box. [3]

| | | |
|--------------|--------------|-------------|
| paper clip | polar bear | leather bag |
| plastic pail | cotton shirt | moss |



33. Study the table below.

| Group P | Group Q |
|---------|-------------|
| marble | cotton wool |
| rock | sponge |
| coin | t-shirt |

(a) How are the objects grouped?

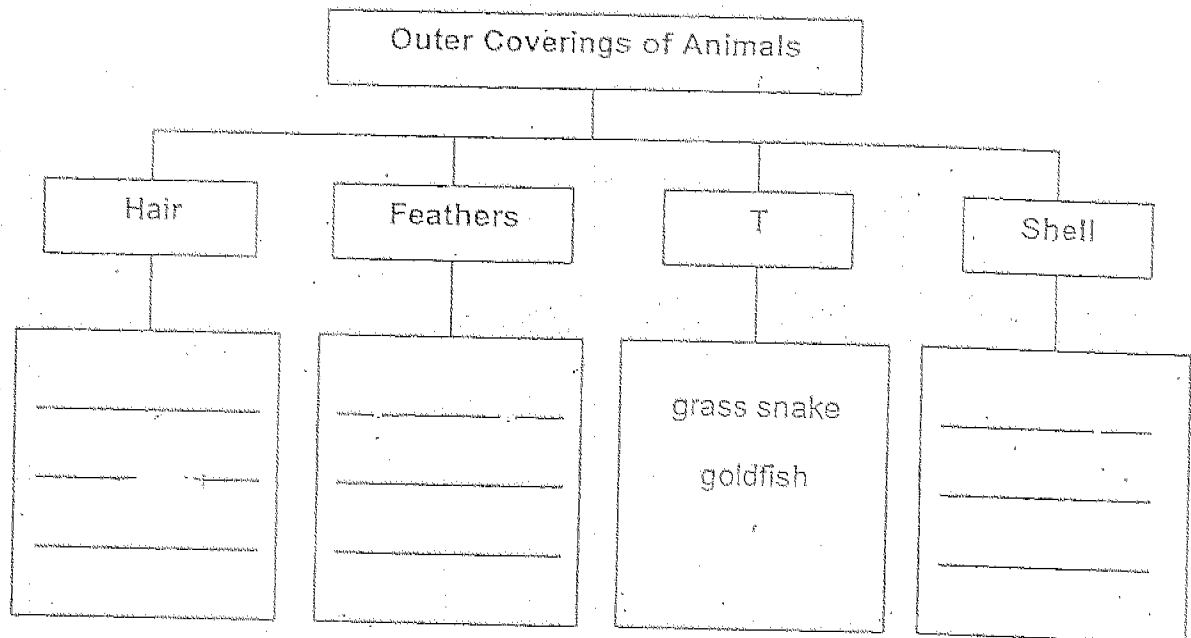
[1]

(b) In which group should 'jelly' be placed?

[1]

- 34 (a) Classify the animals given in the box below according to their outer body coverings. [2½]

| | | |
|----------|----------|---------|
| elephant | tortoise | penguin |
| crab | bat | |



- (b) Identify the outer covering marked T. [½]

35. Joe recorded some animals that live in the pond, garden and sea as below.

| | |
|--------|---------------------------|
| Pond | toad, guppy, frog |
| Garden | earthworm, snail, prawn |
| Sea | Seahorse, turtle, lobster |

- (a) Which animal was wrongly placed?
Explain why it should not be placed there.

[1]

- (b) In which of the above place do you think he could find tadpoles? [1]

36. A hamster was put in a glass box which contained water and food. Then a glass lid was put on the box so that it was airtight.



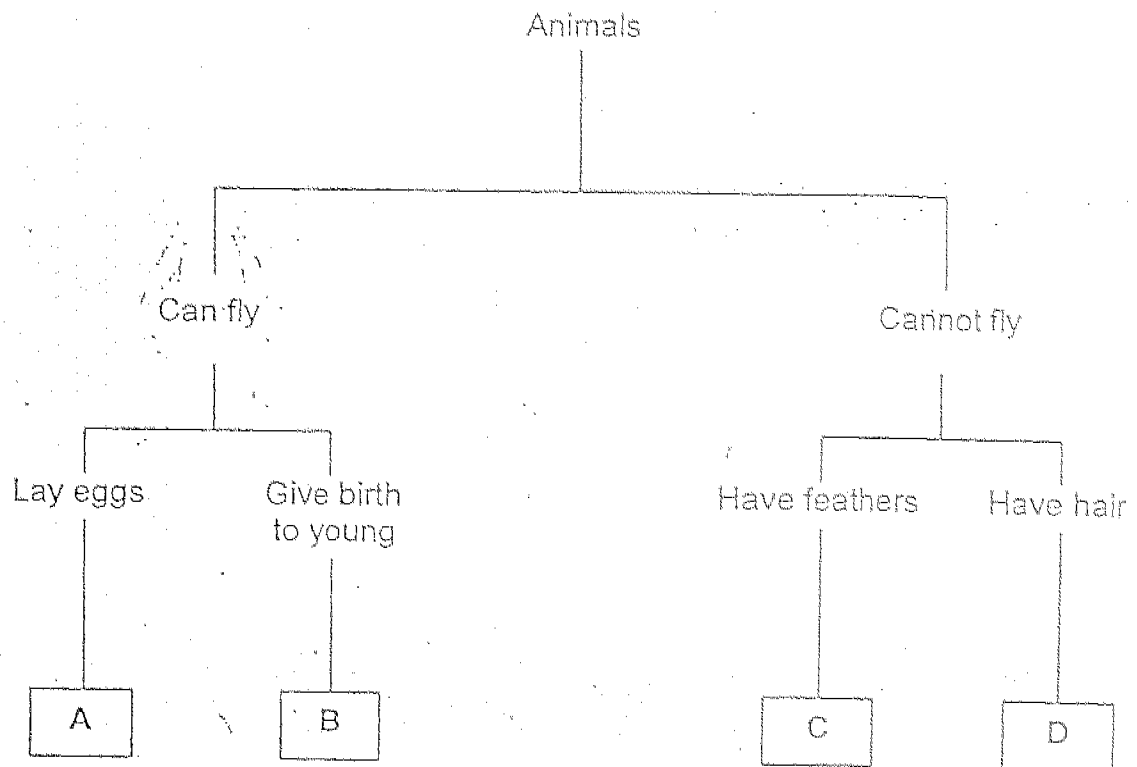
- (a) What do you think would happen to the hamster after a few hours?

[1]

- (b) Give a reason for your answer to (a):
Explain what could have been done to prevent it from happening.

[2]

37. Study the classification below.



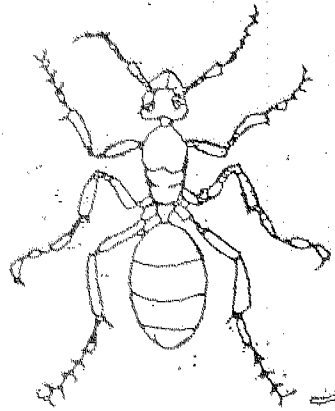
(a) State the characteristics of Animal B.

[1]

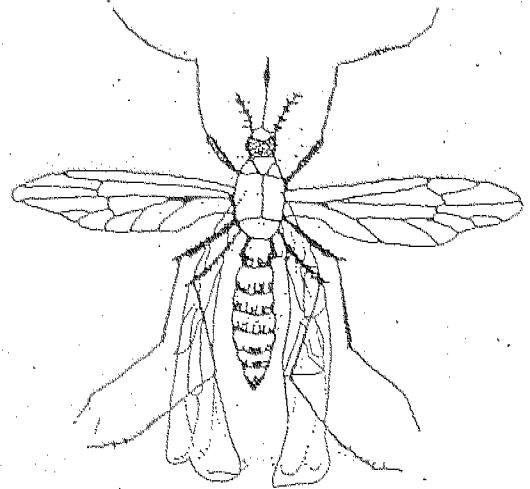
(b) Five animals are given below. Circle the animal(s) that cannot be classified in the classification table shown above. [1]

Bat Worm Clownfish Emu Butterfly

38. Study the two animals below and answer the questions.



Ant



Mosquito

- (a) Based on what you see in the diagram, state two similarities between the 2 animals.

[1]

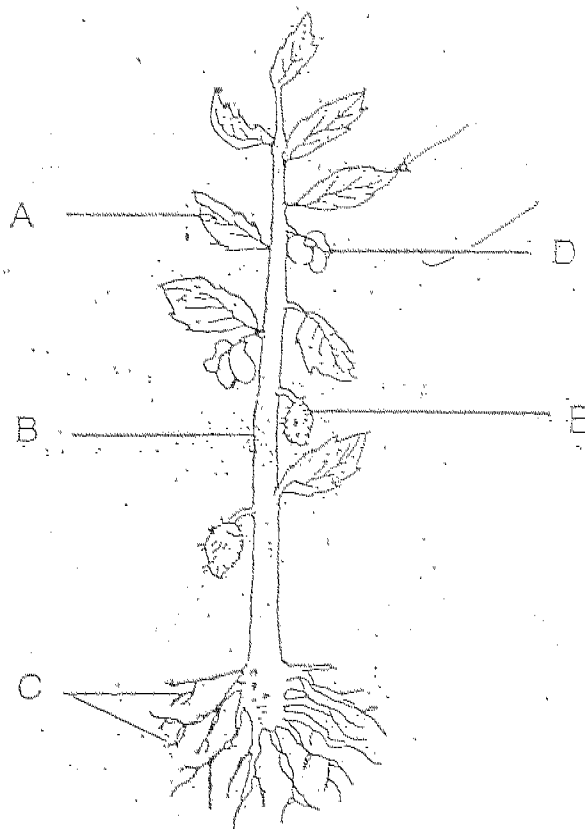
- (b) How are the animals different with regards to the way they move?

[1]

39. The diagram shows a plant.

(a) Draw an arrow (\longrightarrow) to the part that makes food for the plant.

[$\frac{1}{2}$]



(b) Name the parts of the plant labelled A - E.

[$2\frac{1}{2}$]

A: _____

B: _____

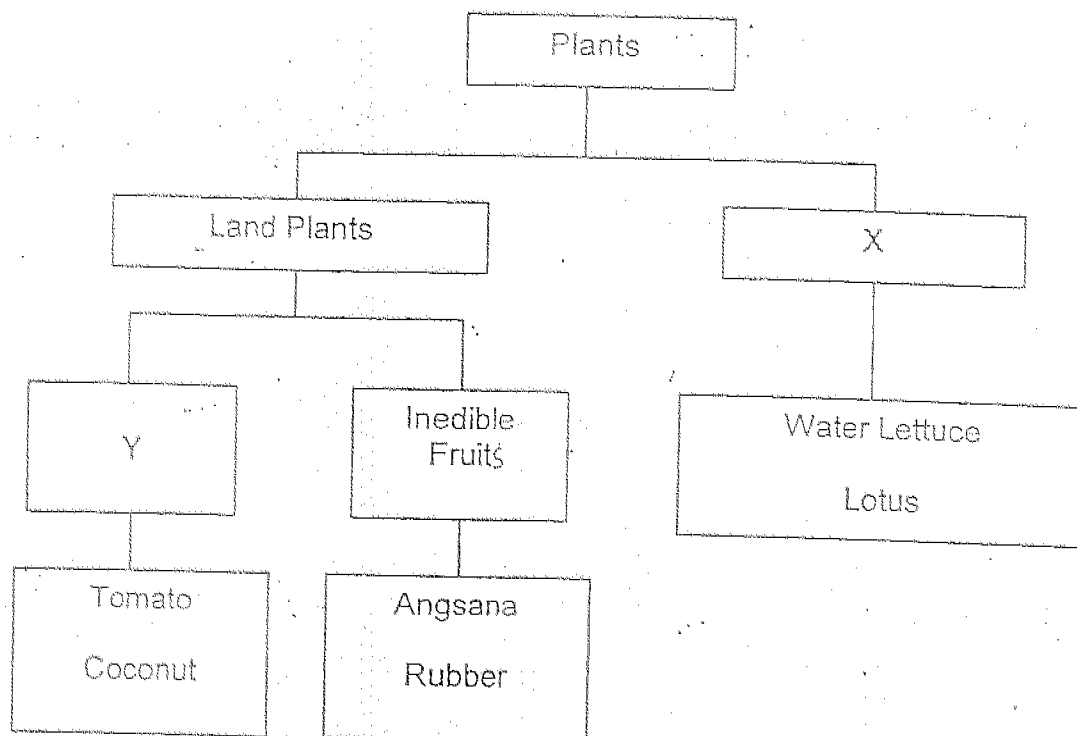
C: _____

D: _____

E: _____

40. Study the classification table below.

[2]



Give suitable headings for X and Y.

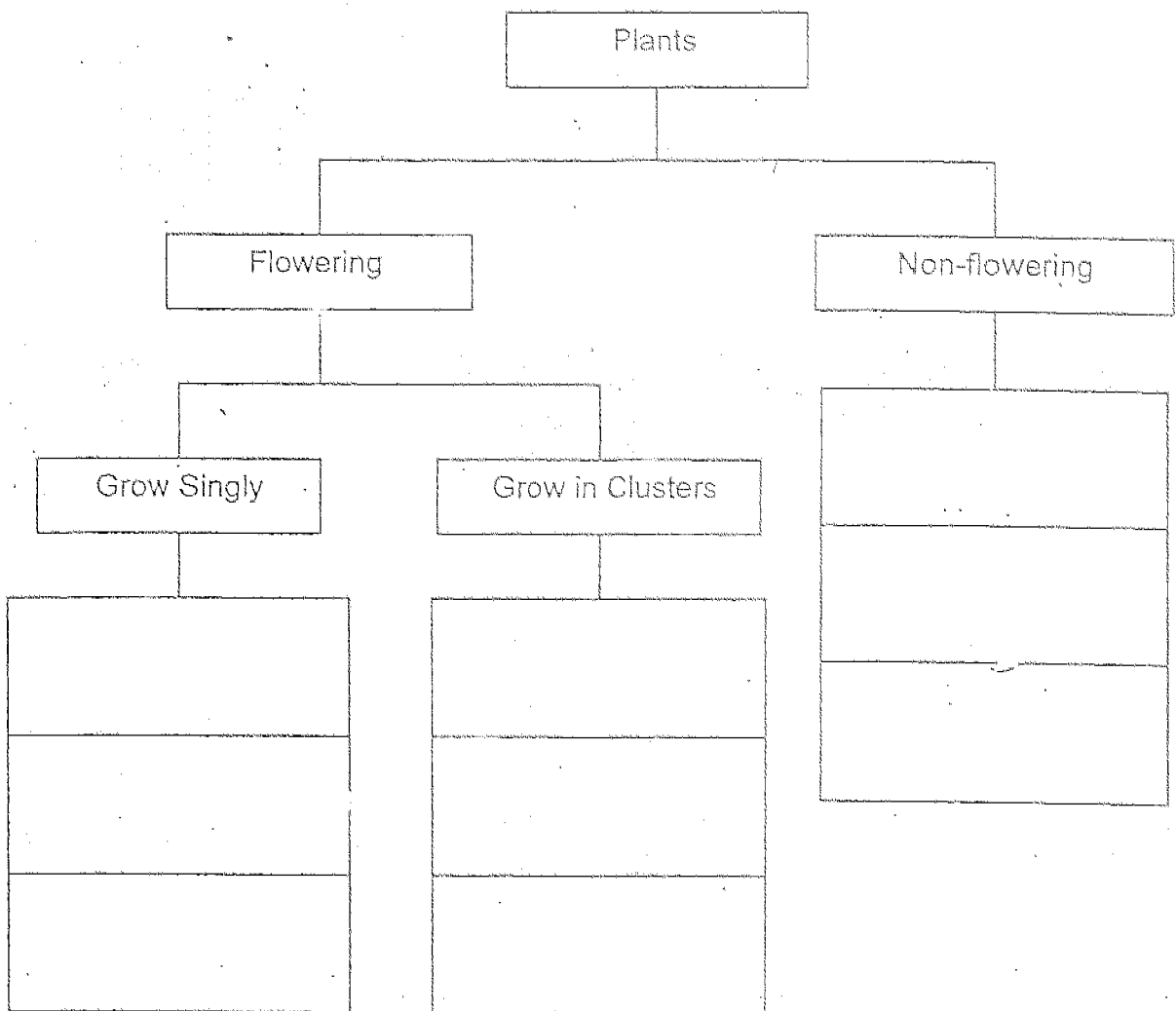
X: _____

Y: _____




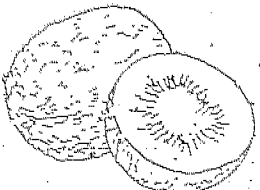
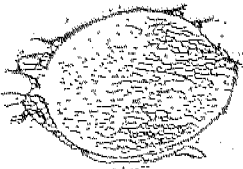
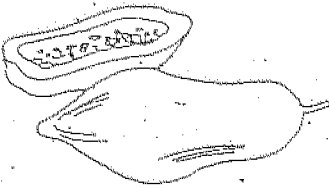
41. Classify the plants in their correct groups.

[3]

| | | |
|-----------------------|-----------------------------|----------------------|
| Frangipani | Bird's Nest Fern | Sunflower |
| Moss | Hibiscus | Ixora |



42. The fruits are put into 2 groups.

| | |
|--|---|
|  <p>peach</p>  <p>rambutan</p>  <p>mango</p> |  <p>kiwi</p>  <p>dragon fruit</p>  <p>papaya,</p> |
| Group 1 | Group 2 |

(a) How are the fruits grouped?

[1]

(b) State one difference between a mango and a rambutan.

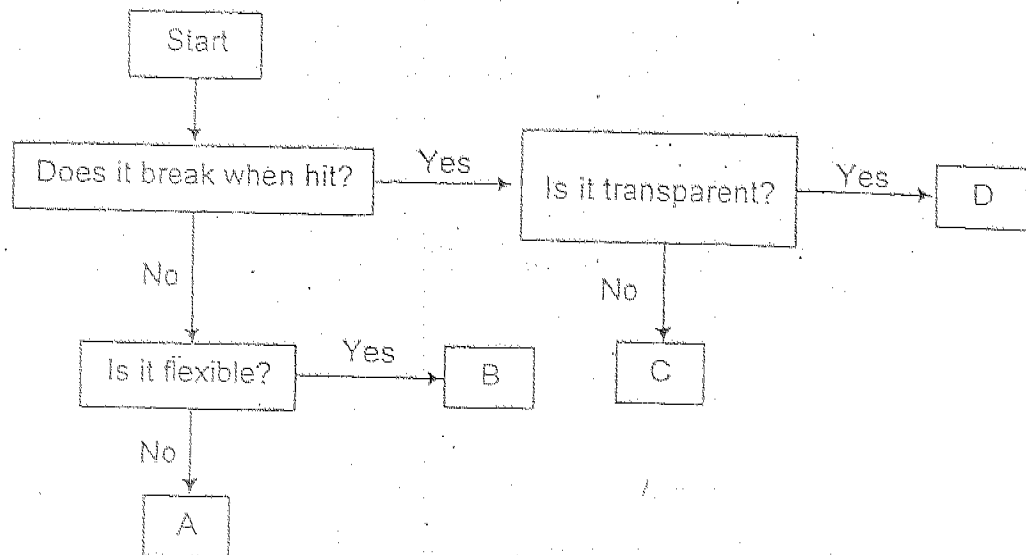
[1]

43. (a) Micro-organisms are very tiny living things. [1]
Name the instrument that we can use to view micro-organisms.

- (b) Explain why some micro-organisms are harmful to people? [1]

- (c) Yeast is a micro-organism. Why is it useful to us? [1]

44. Study the flow chart below.

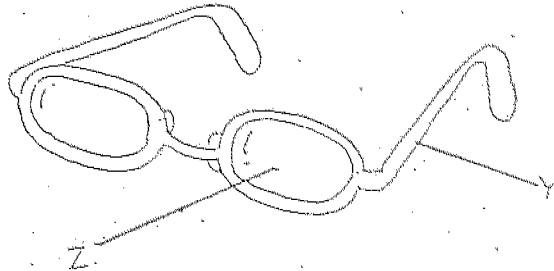


Identify the following represented by letters in the flow chart.
Write the correct letter in the space provided.

[2]

| | |
|-------------|--|
| Metal rod | |
| Claypot | |
| Rubber band | |
| Fish Tank | |

45. The picture shows a pair of spectacles.



- (a) Z is made of plastic instead of glass.
In what way is plastic better?

[1]

- (b) Y is made of metal. Name another material that can be used to make Y.

[1]

- (c) Tick (✓) the objects that can be made from the same materials as a pair of spectacles.

[1]

| Objects | |
|------------|--|
| coffee cup | |
| Towel | |
| Box | |
| magazine | |

46. (a) Draw lines to match the uses to the most suitable object.
Each object can be used only once.

[2]

Warm baked beans over
open flame

Pack sandwiches to take to
school

Serve dinner in a restaurant

Serve fried rice during a
picnic

plastic container

metal container

porcelain plate

paper plate

- (b) Ravi is going for a camp where he will be doing outdoor cooking.
Which one of the objects above should he take with him?

[½]

- (c) Why?

[½]

END-OF-PAPER

ANGLO CHINESE SCHOOL (JUNIOR)
SEMESTRAL ASSESSMENT 1 - 2004
PRIMARY THREE SCIENCE

SAT

| | | |
|-------|---------|-----------|
| 01. 3 | 11. 3 | 21. 2 |
| 02. 1 | 12. 2 | 22. 1 (3) |
| 03. 3 | 13. 4 | 23. 3 (2) |
| 04. 4 | 14. 3 | 24. 2 |
| 05. 2 | 15. (2) | 25. 4 |
| 06. 3 | 16. 4 | 26. 3 |
| 07. 2 | 17. 2 | 27. 2 |
| 08. 4 | 18. 2 | 28. 3 |
| 09. 2 | 19. 1 | 29. 4 |
| 10. 4 | 20. 1 | 30. 4 |

31) a) reproduce b) tick i)

32) Polar bear paper clip.
moss leather bag
plastic pail
cotton shirt

33) a) They are grouped by hard and soft b) Group Q

34) bat penguin tortoise
elephant crab

b) The outer covering marked T is scales.

35) a) Prawn. It should be found in the sea and not in the garden.

b) Pond

36) a) It would die

b) The hamster will die because it does not have air. To prevent it from happening, the owner should not put on the lid.

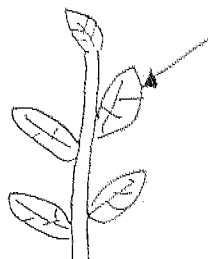
37) a) It gives birth to its young and can fly.

b) Circle worm clownfish

38) a) They both have six legs and three body parts.

b) The ant walks with its legs and the mosquito flies with its wings.

39) a)



b) A : leaf

B : stem

C : roots

D : flower

E : fruit

40) X : water plants

Y : edible fruits

41) Hibiscus . Ixora Moss

Sunflower Frangipani Bird's nest fern

42) a) They are grouped by the number of seeds.

b) A rambutan's skin is hairy whereas a mango's skin is smooth and not hairy.

43) a) Microscope

b) They can cause some illness such as sore-throat.

c) Yeast makes bread fluffy.

44) A

C

B

D

45) a) Plastic is better because it will not break easily.

b) Plastic is another material.

c) Tick coffee cup and Box

46) a)



b) Paper plate

c) Paper plates are light and disposable.