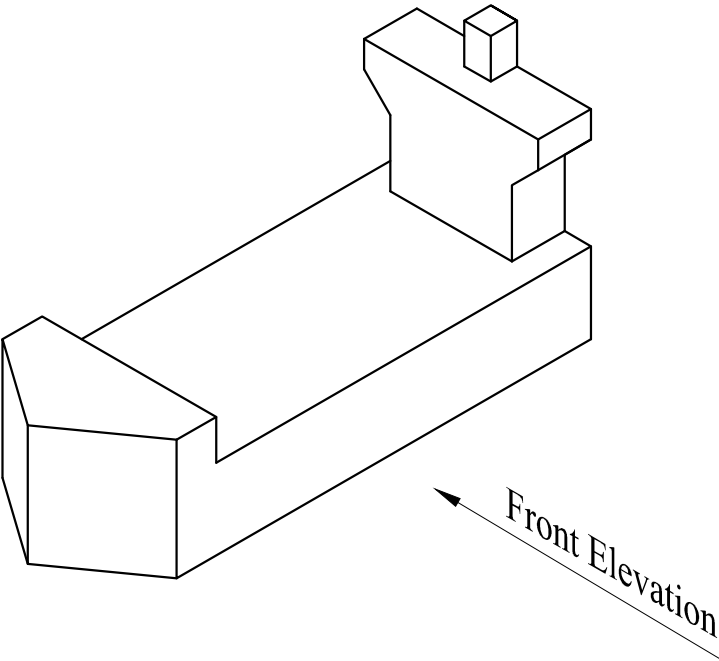
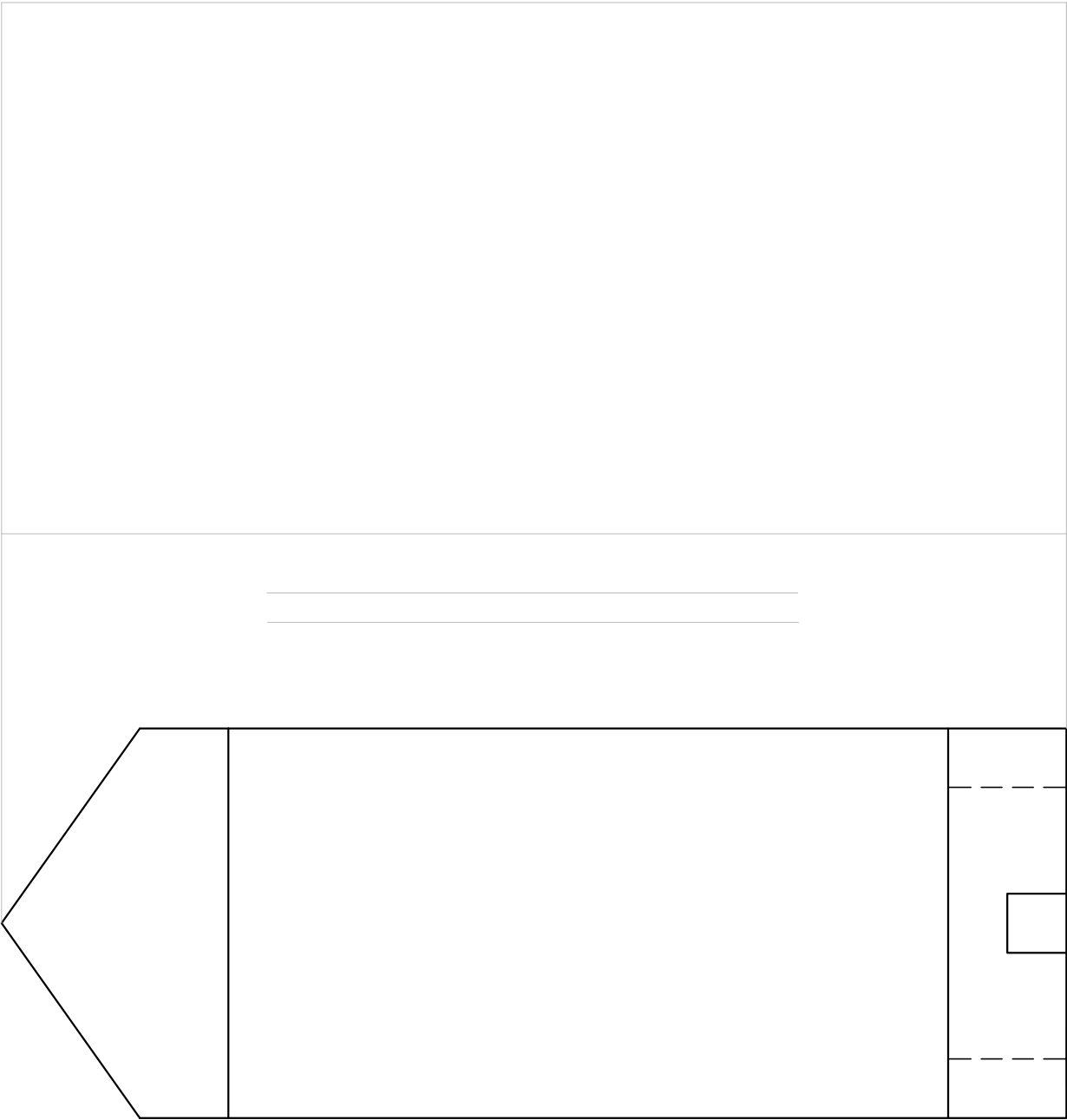


Question No. 1 An isometric projection, an end elevation and a plan of a toy ship are shown.
a) By projecting lines from the end elevation and plan, draw the front elevation of the ship.
b) Label your drawing in neat block letters.
c) Draw the symbol of projection.

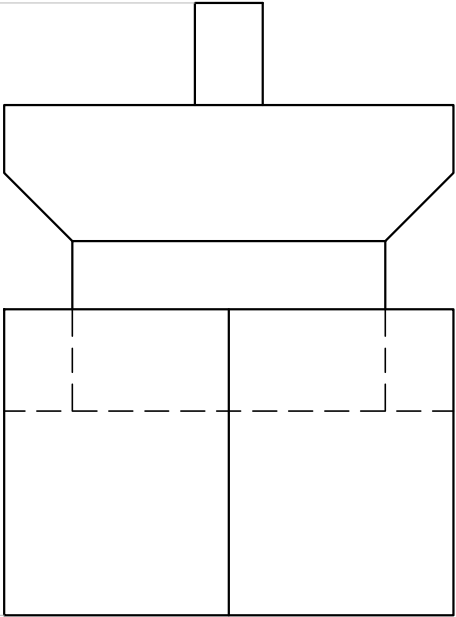
16 marks



ISOMETRIC PROJECTION



PLAN

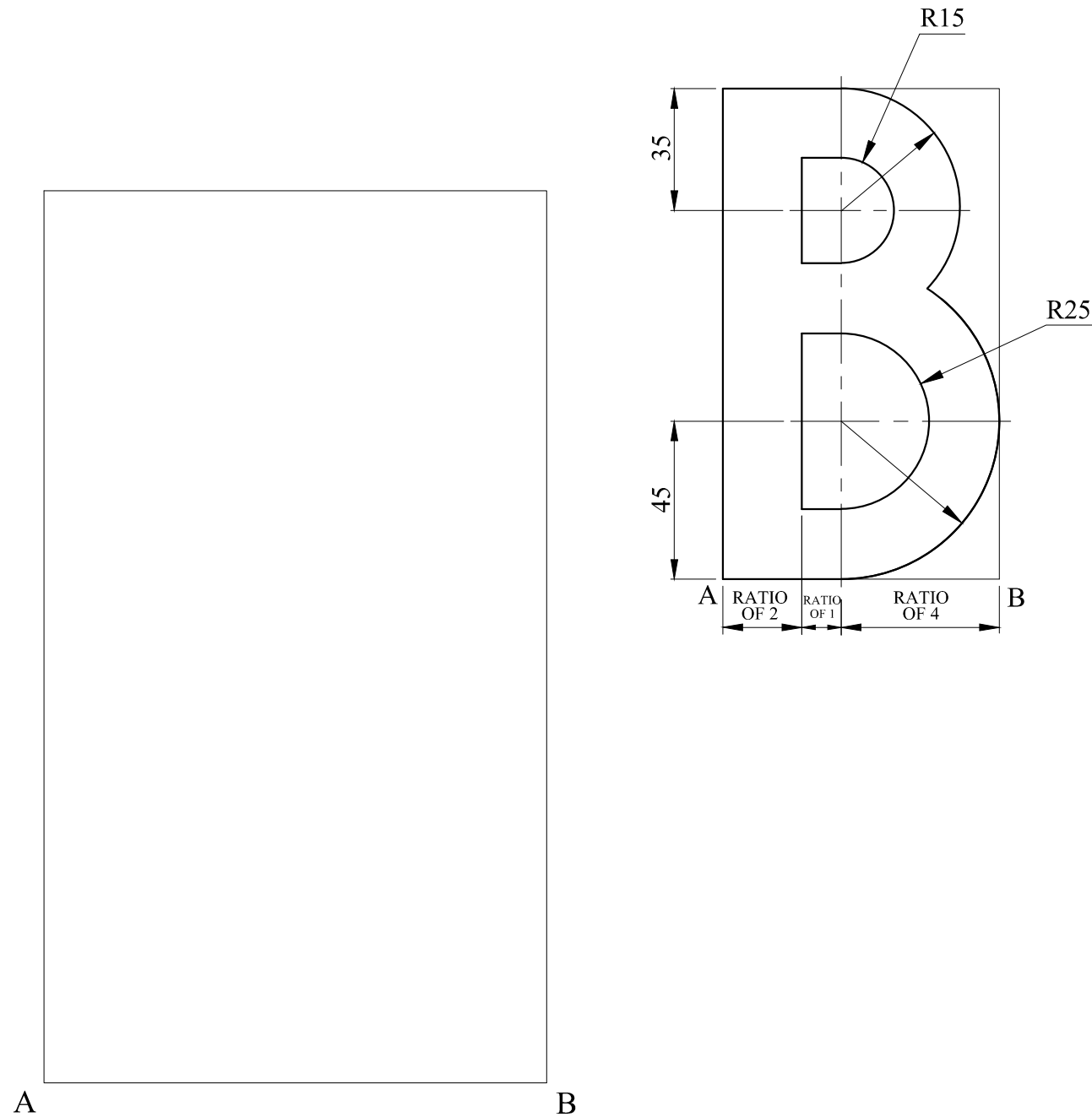


END ELEVATION

SYMBOL OF PROJECTION

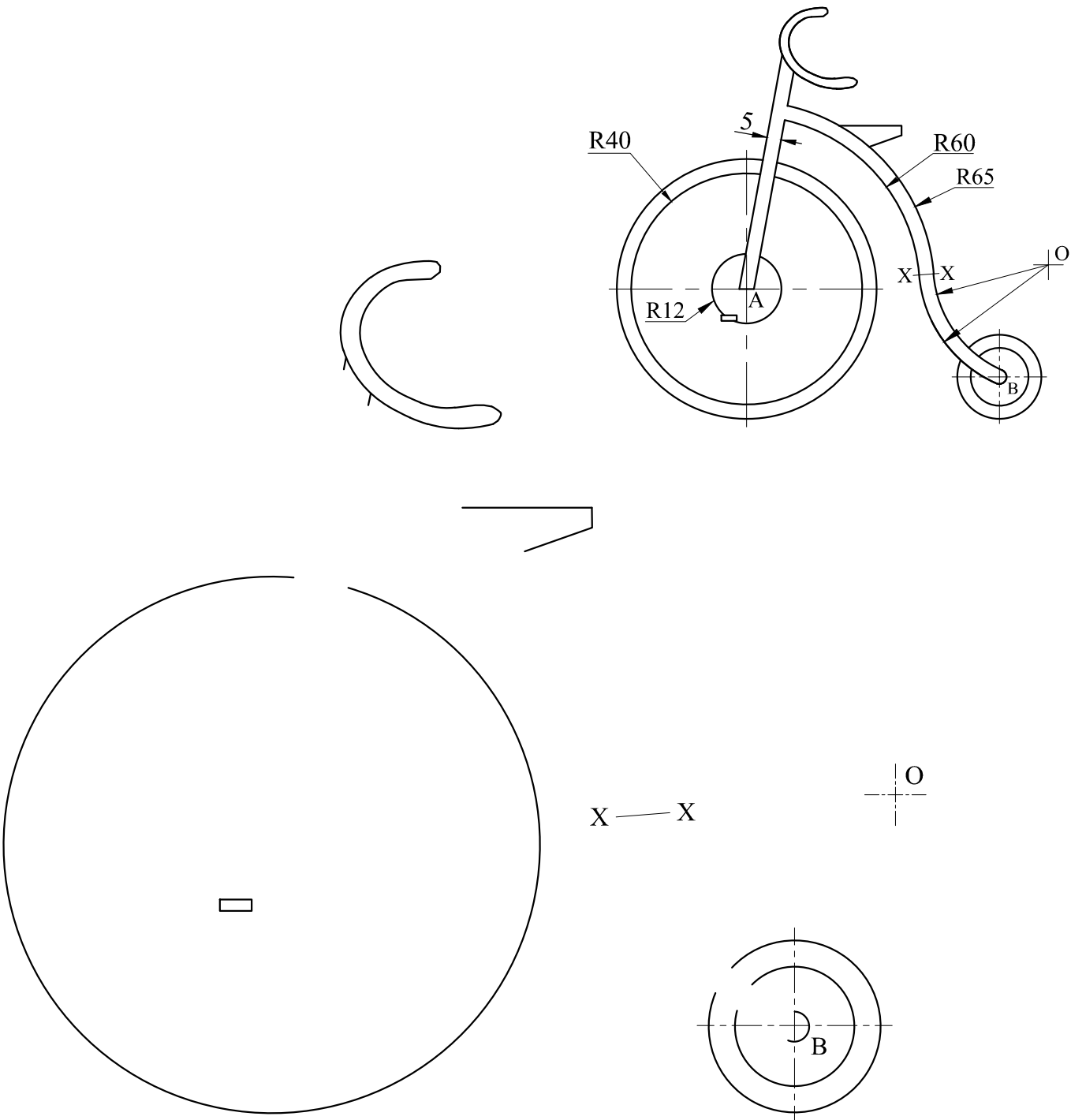
Question No. 2 A drawing of the letter B enclosed in a rectangle is given.
To the given dimensions, make a similar drawing in the rectangle
given below using the necessary drawing instruments.
Start by dividing line AB in the ratio of 2:1:4.

16 marks



Question No. 3 A penny farthing (an old type of bicycle) is drawn.
Continue the drawing started below of a similar bicycle using the given dimensions.
Start by finding centre 'A' of the large circle (the front wheel) using the necessary construction.
Draw the column joining the handle to the centre of the front wheel (see drawing).
With compass at the centre 'A' draw the circle of 12mm radius and the circle of 40mm radius.
With compass at centre 'A' draw the two arcs of 60mm and 65mm radius.
With compass at 'O' draw the two arcs which connect to the centre of the rear wheel to XX.

16 marks



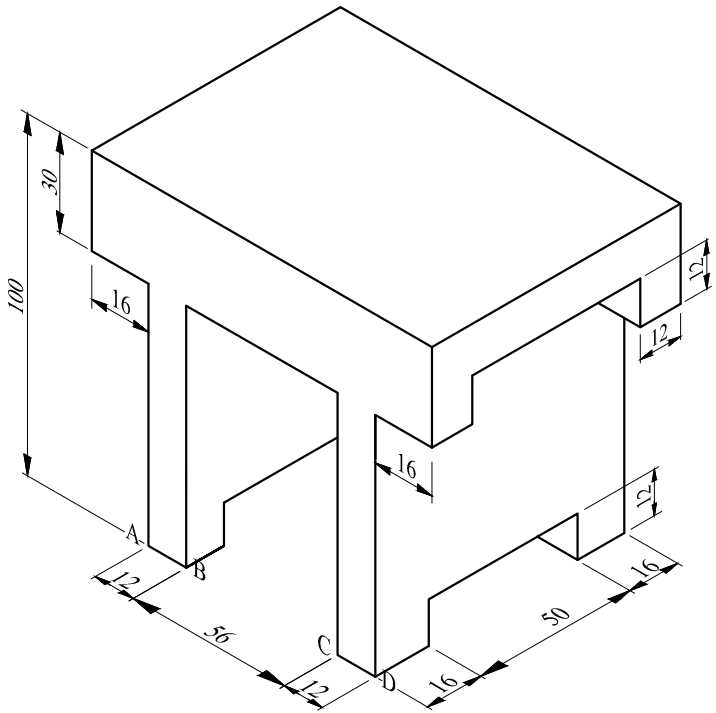
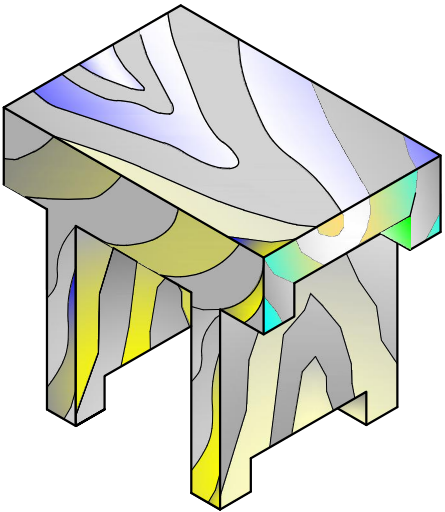
Question No. 4 Two isometric projections of a stool are shown.

a) Using the starter lines given below, complete a **cabinet oblique projection** of the stool to the given dimensions.

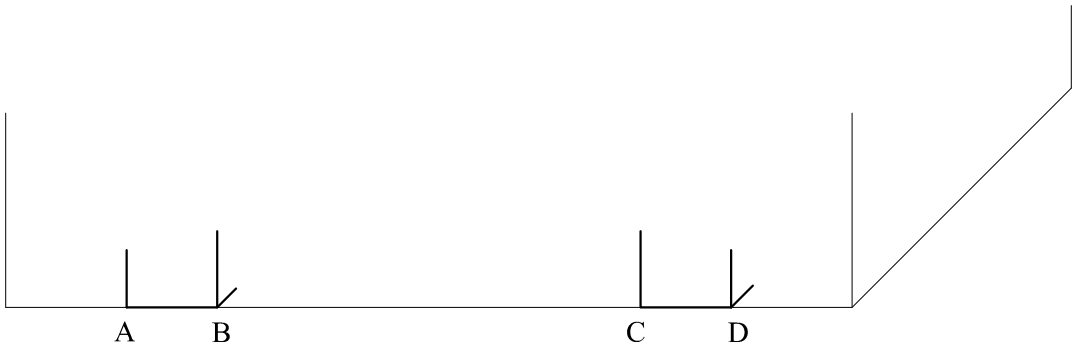
b) Colour or shade the **top only** of your stool similar to the one given.

c) What material is the stool shown made of? Print down your answer below.

18 marks



DRAWING NOT TO SCALE



MATERIAL OF STOOL: _____

Question No. 5 At the entrance of a palace which is to be used as a tourist attraction, a number of signs are needed. Draw a **prohibition sign** which explains that photographs cannot be taken inside the building.

(i) Start by drawing two preliminary freehand sketches to develop the above idea.

(ii) Using your sketches and with the help of drawing instruments where required, make a final drawing of the sign in a circle of 70mm diameter.

Note: Marks will be given for the correct shape of the sign and for the use of the right colours.

16 marks

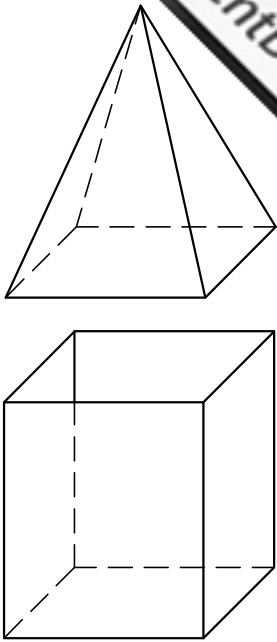
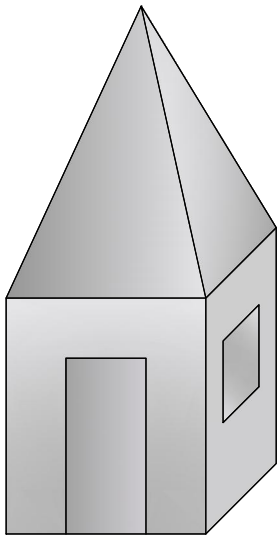
PRELIMINARY SKETCHES

PROHIBITION SIGN

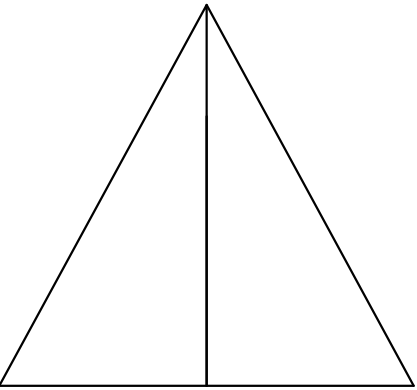
Question No. 6 a) A small room serving as a shelter for security guards is shown on the right. A cardboard model of the room is drawn, ignoring the door and window. The roof is separated from the walls, thus forming two geometrical shapes with a **square base**.
a) In the spaces provided below, print down in block letters the name of each geometrical shape. Choose the right answer from the following names: hexagonal prism, rectangular prism, triangular pyramid, square pyramid, rectangular pyramid, square prism, triangular prism.

18 marks

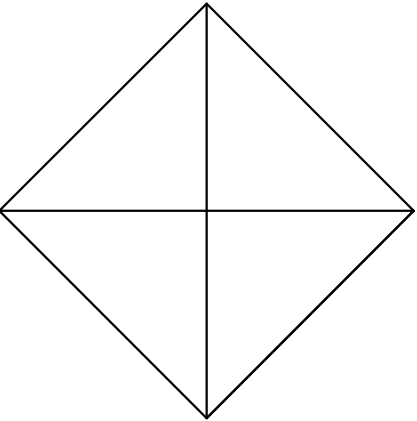
NAME OF TOP PART: _____
NAME OF BOTTOM PART: _____



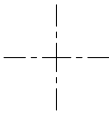
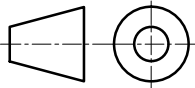
b) Using the given front elevation and plan of the top part of the model, draw the development (without the base) starting from the given centre-lines.



FRONT ELEVATION

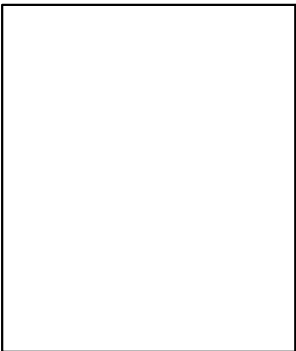
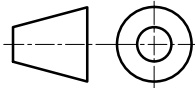


PLAN

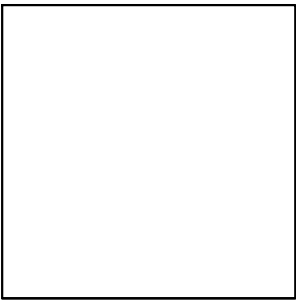


DEVELOPMENT

c) Using the given front elevation and the plan of the bottom part of the model, draw the development (without the lid and the base) on the given start lines.



FRONT ELEVATION



PLAN



DEVELOPMENT