

<div>GAUTENG DEPARTMENT OF EDUCATION GAUTENG DEPARTEMENT VAN ONDERWYS</div>		<div>EXAMINATION NUMBER / EKSAMENNUMMER</div> <div><div></div><div></div><div></div><div></div><div></div><div></div><div></div><div></div><div></div><div></div><div></div><div></div></div>																							
<div>SENIOR CERTIFICATE EXAMINATION SENIORSERTIFIKAAT-EKSAMEN</div>		<div>REQUIREMENTS:</div> <div><div>Drawing equipment</div></div> <div>INSTRUCTIONS:</div> <div><div>Answer ALL questions on the answer sheets provided.</div><div>Write your examination number on EACH answer sheet.</div><div>Approximate any dimensions not given.</div><div>At the end of the session, all answer sheets must be stapled together at the TOP LEFT-HAND corner in the correct sequence.</div><div>All unused answer sheets must be handed in.</div></div>		<div>BENODIGHEDE:</div> <div><div>Tekeninstrumente</div></div> <div>INSTRUKSIES:</div> <div><div>Beantwoord ALLE vrae op die gegewe antwoordvelle.</div><div>Skryf jou eksamennummer op ELKE antwoordvel.</div><div>Benader enige afmetings wat nie gegee is nie.</div><div>Aan die einde van die sessie moet AL die antwoordvelle in die korrekte numeriese volgorde in die BOONSTE LINKERKANTSTE hoek vasgekram word.</div><div>Alle ongebruikte antwoordvelle moet ingehandig word.</div></div>																					
<div><div><div>TECHNICAL DRAWING SG TEGNIесе TEKENE SG</div><div>SECOND PAPER / TWEЕDE VRAESTEL DRAWING BOOK / TEKENEBOEK TIME: 3 Hours / TYD: 3 Ure MARKS: 150 / PUNTE: 150  711-2/2 U</div></div></div>																									
<div>6 PAGES / 6 BLADSYE</div>																									
		<table><tr><td>QUESTION VRAAG</td><td>MARKS PUNTE</td><td>INITIAL PARAFEER</td></tr><tr><td>1.</td><td></td><td></td></tr><tr><td>2.</td><td></td><td></td></tr><tr><td>3.</td><td></td><td></td></tr><tr><td>4.</td><td></td><td></td></tr><tr><td>TOTAL TOTAAL</td><td></td><td></td></tr><tr><td>CONTROLLER KONTROLEERDER</td><td></td><td></td></tr></table>			QUESTION VRAAG	MARKS PUNTE	INITIAL PARAFEER	1.			2.			3.			4.			TOTAL TOTAAL			CONTROLLER KONTROLEERDER		
QUESTION VRAAG	MARKS PUNTE	INITIAL PARAFEER																							
1.																									
2.																									
3.																									
4.																									
TOTAL TOTAAL																									
CONTROLLER KONTROLEERDER																									
<div>COPYRIGHT RESERVED / KOPIEREG VOORBEHOU</div>																									

### QUESTION 1

The given figure shows an isometric view of a casting. Draw to a scale of 1:1 and in third-angle orthographic projection the following views of the casting:

- 1.1 A front view as seen in the direction of the arrow
- 1.2 A left view
- 1.3 A top view
- 1.4 Indicate the projection symbol representing third-angle orthographic projection in the space provided.

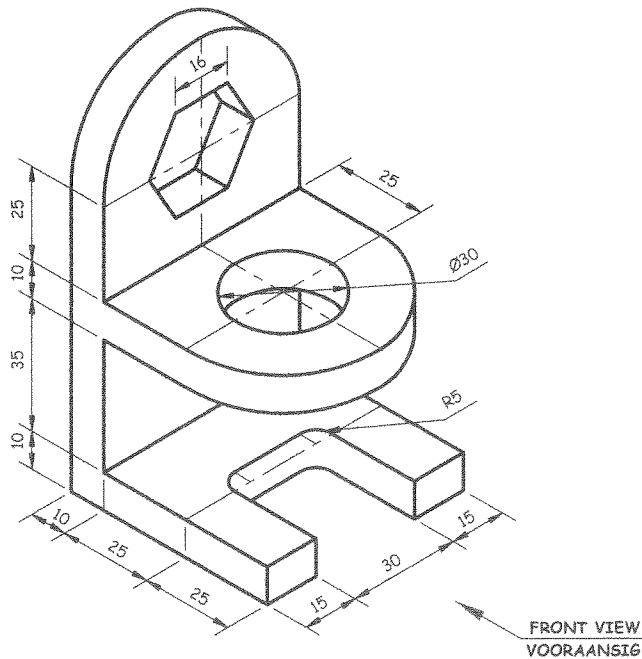
ALL hidden detail must be shown.  
No dimensions are required.

VRAAG 1

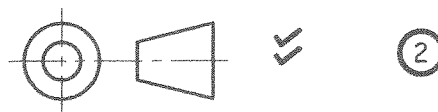
Die gegewe figuur toon 'n isometriese aansig van 'n gietstuk. Teken volgens 'n skaal van 1:1 en in derdehoekse ortografiese projeksie die volgende aansigte van die gietstuk:

- 1.1 'n Vooraansig vanuit die rigting wat deur die pyl aangedui word
- 1.2 'n Linkeraansig
- 1.3 'n Booaansig
- 1.4 Toon die projeksiesimbool vir derdehoekse ortografiese projeksie in die ruimte wat daarvoor voorsien word.

ALLE verborge detail moet getoon word.  
Geen afmetings word vereis nie.



SYMBOL / SIMBOOL



EXAMINATION NUMBER:      

--	--	--

--	--	--	--	--	--

--	--	--	--

EKSAMENNUMMER:      

--	--	--

--	--	--	--	--	--

--	--	--	--

TECHNICAL DRAWING STANDARD GRADE  
TEGNIJSE TEKENE STANDAARDGRAAD

SG 711 - 2/2 U  
SG 711 - 2/2 U

ANSWER SHEET 1  
ANTWOORDVEL 1

Placing Plasing	-3		
Presentation Aanbieding	-2		
Front view Vooraansig	9		
Top view Bo-aansig	7		
Left view Linkeraansig	7		
Symbol Simbool	2		
<b>TOTAL TOTAAL</b>	<b>25</b>		

QUESTION 2

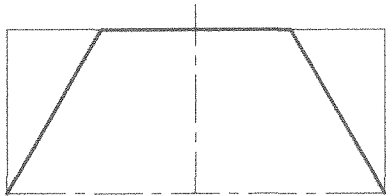
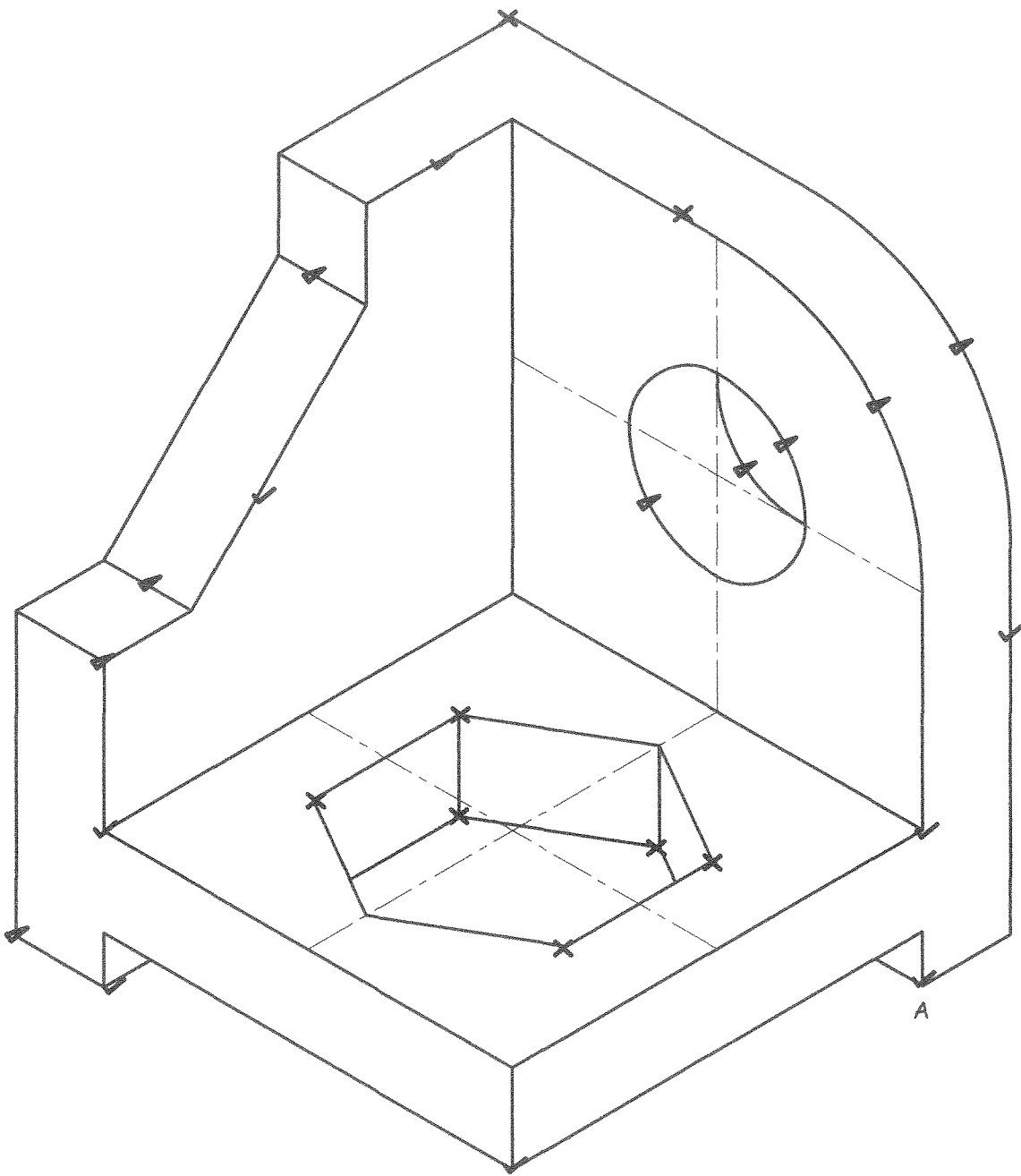
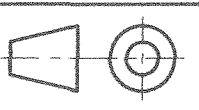
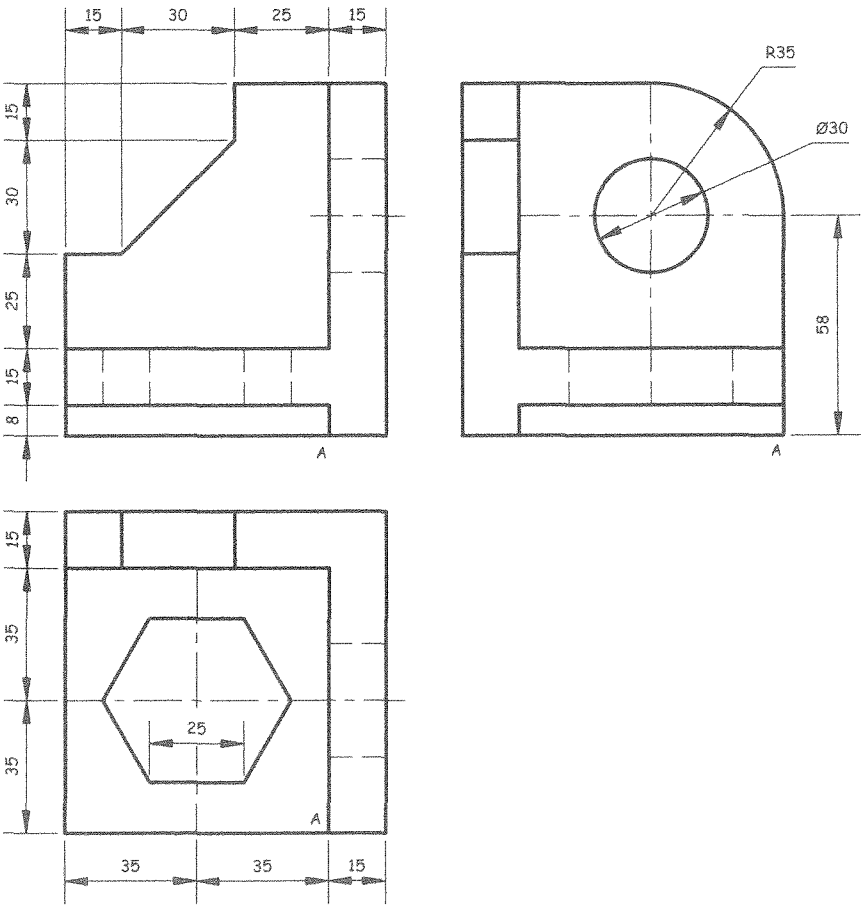
The given figure shows three views of a casting in first-angle orthographic projection. Draw to a scale of 1:1 a neat isometric view of the casting.

Use point A to start the drawing.

VRAAG 2

Die gegewe figuur toon drie aansigte van 'n gietstuk in eerstehoekse ortografiese projeksie. Teken volgens 'n skaal van 1:1 'n netjiese isometriese aansig van die gietstuk.

Gebruik punt A as beginpunt.



✓ Frontal plane Voorste vlak	8		
✗ Top plane Boonste vlak	8		
✓ Left plane Linkervlak	9		
Linework Lynwerk	-3		
TOTAL TOTAAL	25		

EXAMINATION NUMBER:  
EKSAMENNOMMER:

TECHNICAL DRAWING STANDARD GRADE  
TEGNIIESE TEKENE STANDAARDGRAAD

SG 711 - 2/2 U  
SG 711 - 2/2 U

ANSWER SHEET 2  
ANTWOORDVEL 2

QUESTION 3

Three views of a dwelling that has been developed as part of a project of 100 low-cost houses in Mamelodi, Tswane-East, are shown. Draw a neat, two-point perspective view of the dwelling.

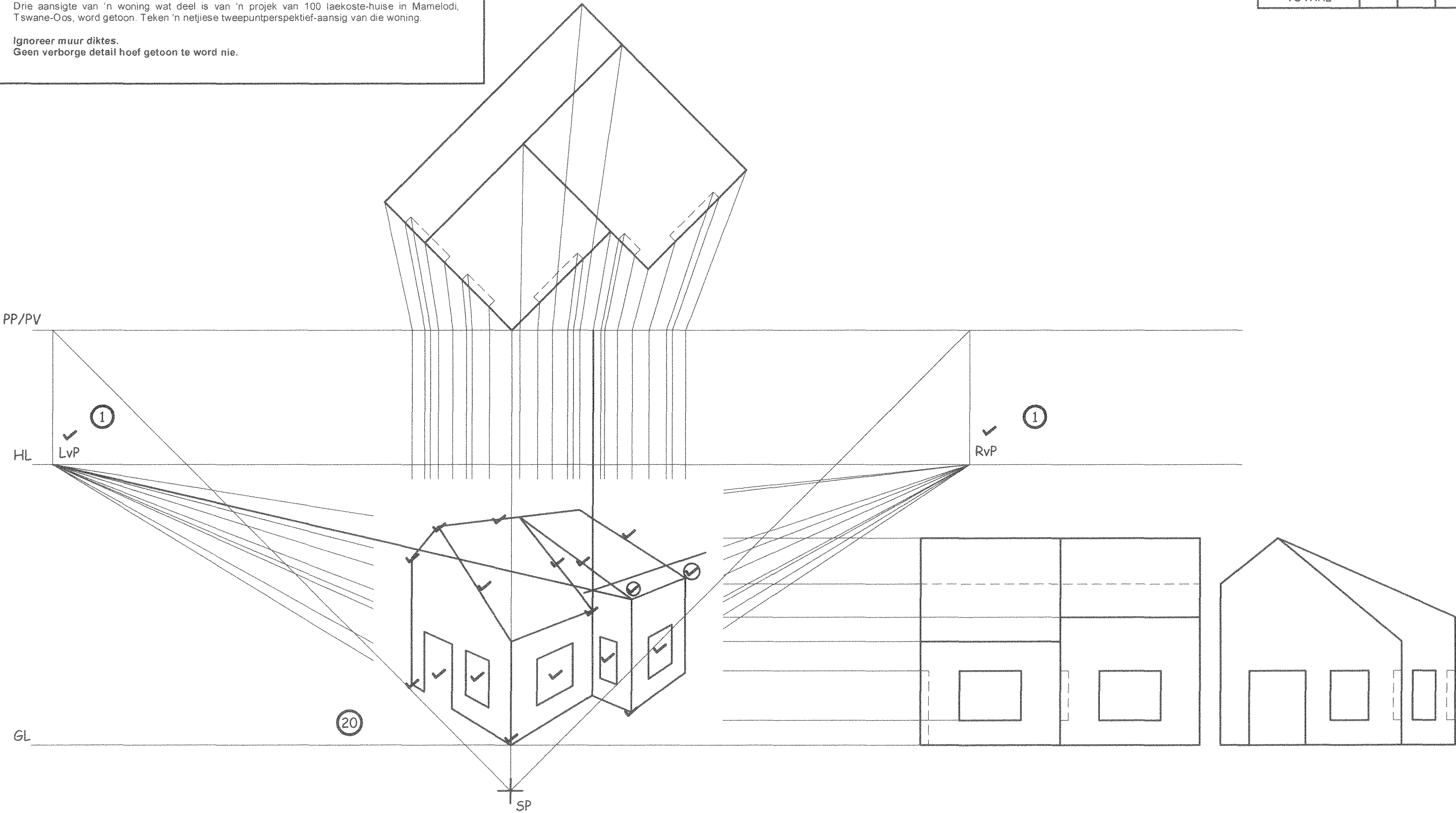
Ignore wall thickness.  
No hidden detail is required.

VRAAG 3

Drie aansigte van 'n woning wat deel is van 'n projek van 100 laekoste-huise in Mamelodi, Tswane-Oos, word getoon. Teken 'n netjiese tweepuntperspektief-aansig van die woning.

Ignoreer muur diktes.  
Geen verborge detail hoef getoon te word nie.

Perspective view Perspektief-aansig	20		
Vanishing points Verdwynpunte	2		
Presentation Aanbieding	3		
TOTAL TOTAAL	25		

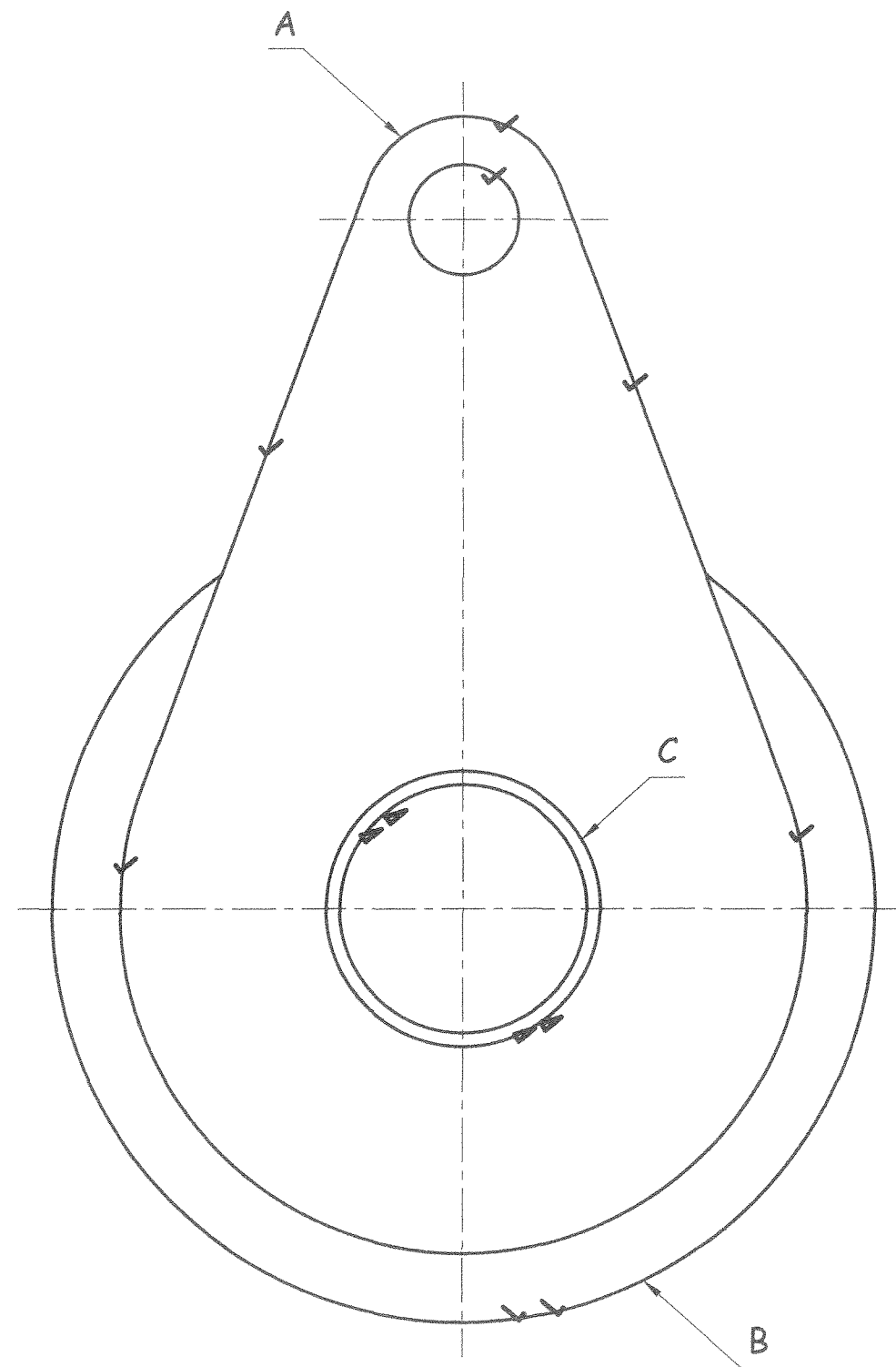
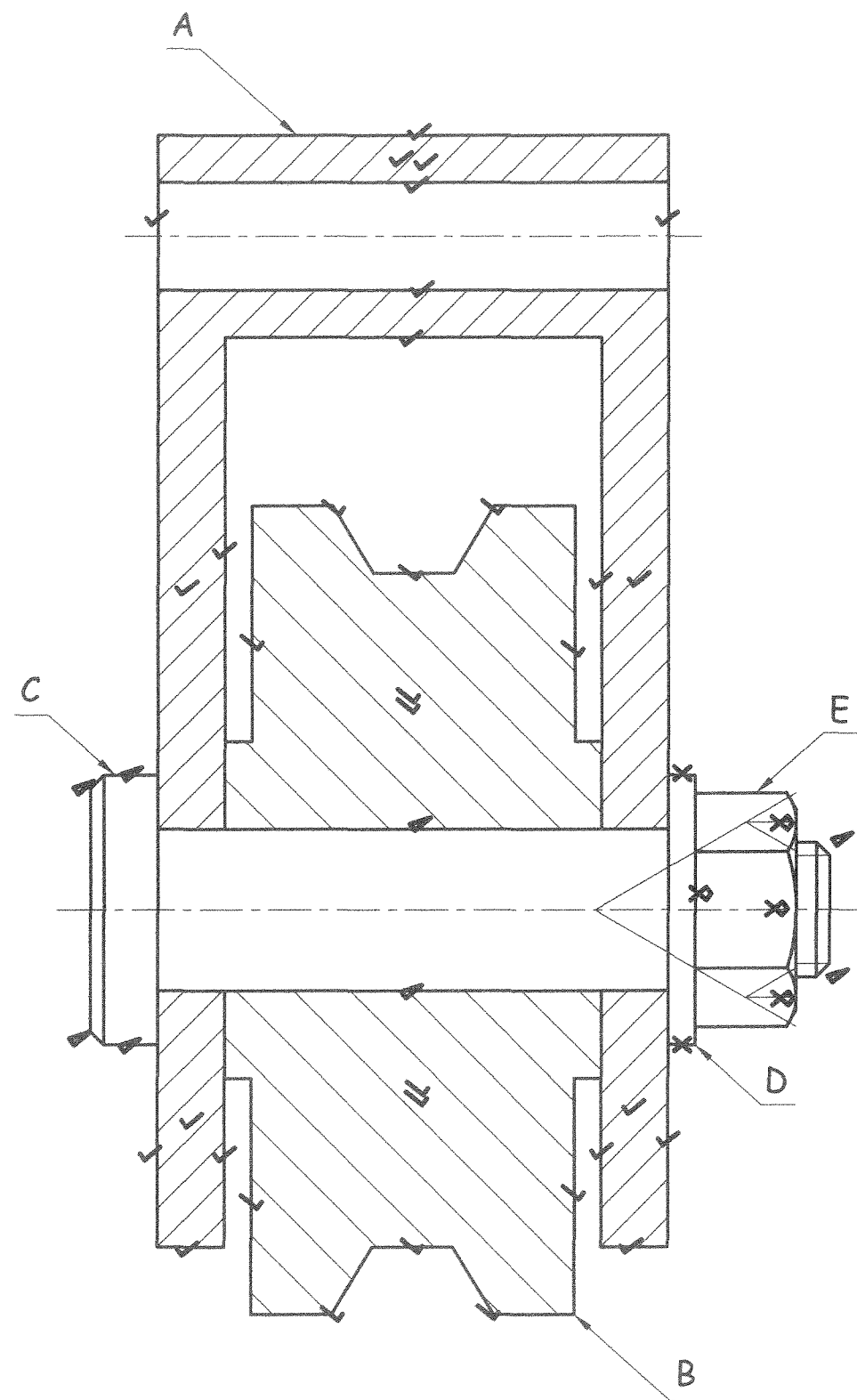


EXAMINATION NUMBER:  
EKSAMENNOMMER:

TECHNICAL DRAWING STANDARD GRADE  
TEGNIесе TEKENE STANDAARDGRAAD

SG 711 - 2/2 U  
SG 711 - 2/2 U

ANSWER SHEET 3  
ANTWOORDVEL 3



FRONT VIEW VOORAANSIG				
✓	PART A	20		
✓	PART B	14		
✓	PART C	8		
✗	PART D	2		
✗	PART E	4		
TOTAL / TOTAAL		48		
LEFT VIEW LINKER-AANSIG				
✓	PART A	6		
✓	PART B	2		
✓	PART C	4		
TOTAL / TOTAAL		12		
48 + 12 = 60		60		
ASSEMBLY SAMESTELLING		4		
DIMENSIONS AFMETINGS		3		
LINEWORK LYNWERK		4		
TITLE TITEL		2		
SYMBOL SIMBOOL		2		
TOTAL TOTAAL		75		

SYMBOL / SIMBOOL	TITLE BLOCK / TITELBLOK	
	PULLEY ASSEMBLY SCALE 1:1	KATROL SAMESTELLING SKAAL 1:1

EXAMINATION NUMBER:  
EKSAMENNOMMER:




TECHNICAL DRAWING STANDARD GRADE  
TEGNIесе TEKENE STANDAARDGRAAD

SG 711 - 2/2 U  
SG 711 - 2/2 U

ANSWER SHEET 4  
ANTWOORDVEL 4