

INTERNATIONAL INDIAN SCHOOL, DAMMAM

UPPER PRIMARY SECTION

SUMMATIVE ASSESSMENT – 2 (MARCH – 2014)

CLASS: IV

TIME: 2 hours

SUBJECT: EVS

MARKS: ORALS = /10

Name: \_\_\_\_\_ Sec: \_\_\_\_\_ Roll No: \_\_\_\_\_ WRITTEN = /50

Instructions:

TOTAL = /60

1. Part A to be done in the Question Paper.
2. Part B to be done in the Answer Sheet.
3. Read the questions carefully and attempt all.
4. Read your paper thoroughly before submission.

Part -A

Q.I Fill in the blanks:

(½ X 10 = 5 marks)

- 1) All matter is made up of very tiny particles called \_\_\_\_\_.
- 2) The moon completes one revolution around the earth in \_\_\_\_\_ days.
- 3) A uniform mixture of a solute and solvent is called a \_\_\_\_\_.
- 4) The \_\_\_\_\_ of the earth on its axis causes day and night.
- 5) The soil deposited by the rivers is called \_\_\_\_\_.
- 6) The wearing out and carrying away of the topsoil by natural forces is called \_\_\_\_\_.
- 7) The earth spins like a top from \_\_\_\_\_ to \_\_\_\_\_.
- 8) Among the three layers of soil, the \_\_\_\_\_ is best for plants.
- 9) Burning of wood is a \_\_\_\_\_ change.
- 10) The \_\_\_\_\_ is the star nearest to the earth.

**Q.II Choose the correct answers:**

(½ X 6 = 3)

- 1) The Earth is divided into two equal halves by an imaginary line called \_\_\_\_\_.  
 a) Tropic of Cancer                      b) Equator                      c) Tropic of Capricorn
- 2) The \_\_\_\_\_ change is a temporary change.  
 a) physical                      b) chemical                      c) mechanical
- 3) The \_\_\_\_\_ is mainly made up porous and non-porous rocks.  
 a) topsoil                      b) subsoil                      c) bedrock
- 4) A liquid in which a solid dissolves is called \_\_\_\_\_.  
 a) solvent                      b) solute                      c) solution
- 5) The movement of the earth round the sun in its orbit is called \_\_\_\_\_.  
 a) rotation                      b) revolution                      c) communication
- 6) The protection of soil from washing away by eroding agents is called \_\_\_\_\_.  
 a) soil erosion                      b) soil conservation                      c) soil profile

**Q.III Write 'True' or 'False':**

(½ X 8 = 4 marks)

- 1) Changing of milk into curd is a physical change. ( \_\_\_\_\_ )
- 2) The axis of the earth is tilted. ( \_\_\_\_\_ )
- 3) Water can pass through non-porous rocks. ( \_\_\_\_\_ )
- 4) Ammonia cannot be dissolved in water. ( \_\_\_\_\_ )
- 5) Humus makes the soil fertile and good for growing crops. ( \_\_\_\_\_ )
- 6) An imaginary line that lies between the North Pole and the Equator is called Tropic of Cancer.  
 ( \_\_\_\_\_ )
- 7) Liquids change their shape easily. ( \_\_\_\_\_ )
- 8) The mantle of the Earth is made up of mostly nickel and iron. ( \_\_\_\_\_ )

**Q.IV Match the following :**

(½ X 6 = 3 marks)

- |  |                        |     |
|--|------------------------|-----|
| 1) Space between the molecules                             | Venus                  |     |
| 2) Burrowing animals                                       | communications         | ( ) |
| 3) Artificial satellites                                   | bind the soil          | ( ) |
| 4) The roots of the plants                                 | intermolecular space   | ( ) |
| 5) It does not have moons                                  | potassium permanganate | ( ) |
| 6) When it is dissolved in water, it gives a pink solution | enrich the soil        | ( ) |

**Q.V Name the following:**

(½ X 6 = 3 marks)

- 1) I am a planet closest to the sun .I am the smallest planet. Who am I?  
I am \_\_\_\_\_.
- 2) I was a planet. Now I am disqualified as I take more than two centuries to revolve around the sun.  
Who am I?  
I am \_\_\_\_\_.
- 3) I am made up of three main layers. They are the outer crust, mantle and core. What am I?  
I am the \_\_\_\_\_.
- 4) I am built on the banks of rivers to reduce the force of running water. This way I help the topsoil from being washed away. What am I?  
I am a \_\_\_\_\_.
- 5) I am the first artificial satellite. I was launched by the Russians on 4 October 1957. Who am I?  
I am \_\_\_\_\_.
- 6) I am dissolved in pond, river and stream water. I am used by aquatic plants and animals for breathing. Who am I?  
I am \_\_\_\_\_.

**Q.VI Encircle the correct answers in the grid:**

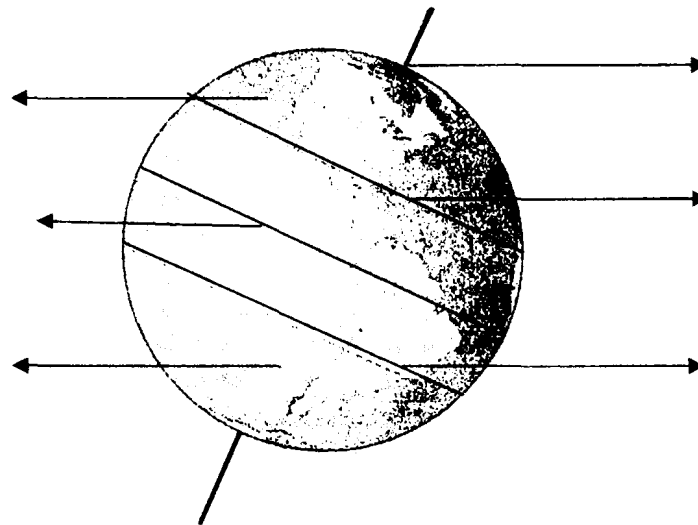
(  $\frac{1}{2}$  X 6 = 3 mark )

- 1) The hot molten rock in volcano
- 2) The biggest planet.
- 3) Solid state of water.
- 4) The body wastes of this animal enrich the soil.
- 5) The astronomers study stars with the help of this instrument.
- 6) A satellite launched by India.

S	E	A	R	T	H	W	O	R	M
T	E	L	E	S	C	O	P	E	L
E	H	A	U	A	S	G	A	M	G
L	M	V	H	R	O	H	I	N	I
N	Q	A	W	D	L	M	I	U	F
P	O	J	U	P	I	T	E	R	U
Q	N	S	B	Y	D	I	C	E	C

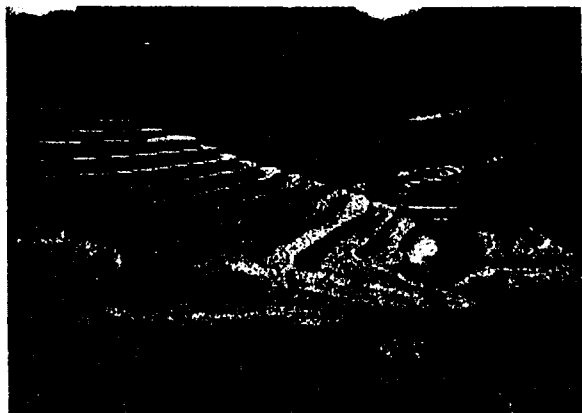
**Q.VII Label the following imaginary lines on the earth:**

(  $\frac{1}{2}$  X 6 = 3 mark )



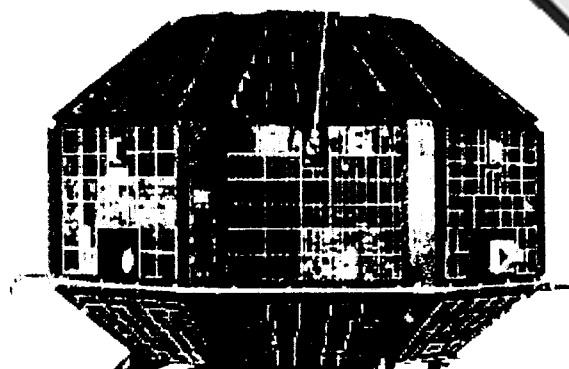
Q.VIII Identify the following diagrams and answer accordingly :

(= 4 marks)



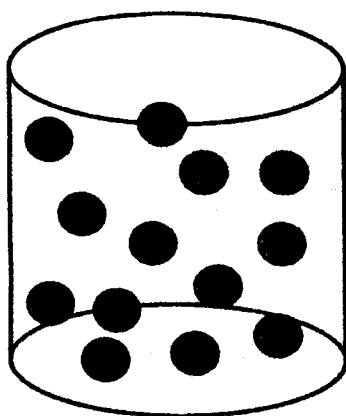
This is \_\_\_\_\_.

This method is employed in \_\_\_\_\_  
areas for the conservation of soil.



This is \_\_\_\_\_.

This was the first satellite launched  
by \_\_\_\_\_.



These are the molecules of \_\_\_\_\_.

There is more \_\_\_\_\_  
between their molecules.



This is the soil erosion by \_\_\_\_\_.

Being lighter and softer, the \_\_\_\_\_  
is worst affected by soil erosion.

**PART –B****(To be done in answer sheet)****Q.I Define the following terms:****(1 X 5)**

- 1) Satellites
- 2) Subsoil
- 3) Matter
- 4) Solar system
- 5) Liquid

**Q.II Answer the following: (Any 4)****(2 X 4 = 8 marks)**

- 1) How can we conserve soil by plantation method?
- 2) Why does a bottle of soda-water bubble out when it is opened?
- 3) Why do the planets not collide with each other while moving around the sun?
- 4) What is the equator? Explain.
- 5) What are the methods employed to prevent soil erosion?

**Q.III Differentiate between the following: (Any 2 )****(3 X 2 = 6 marks)**

- 1) Rotation and Revolution
- 2) Physical change and Chemical change
- 3) Solid and Gas

**Q.IV Draw, colour and label the three layers of the soil.****(3 marks)**