

Tuesday 26 June 2012 – Afternoon

GCSE HEALTH AND SOCIAL CARE

A914/02 Safeguarding and Protecting Individuals

Candidates answer on the Question Paper.

OCR supplied materials:

None

Other materials required:

None

Duration: 1 hour



Candidate forename		Candidate surname	
Centre number		Candidate number	

MODIFIED LANGUAGE

INSTRUCTIONS TO CANDIDATES

- Write your name, centre number and candidate number in the boxes above. Please write clearly and in capital letters.
- Use black ink. Pencil may be used for graphs and diagrams only.
- Read each question carefully. Make sure you know what you have to do before starting your answer.
- Write your answer to each question in the space provided. If additional space is required, you should use the lined pages at the end of this booklet. The question number(s) must be clearly shown.
- Answer **all** the questions.
- Do **not** write in the bar codes.

INFORMATION FOR CANDIDATES

- The number of marks is given in brackets [] at the end of each question or part question.
- The total number of marks for this paper is **60**.
- This document consists of **12** pages. Any blank pages are indicated.

- 1 People with mental illness may be ill-treated.

Identify **three** types of ill-treatment towards people with mental illness.

- 1
2
3 [3]

- 2 Describe **two** key features of the Mental Health Act 2007.

- 1
.....
.....
.....
2
.....
.....
..... [4]

- 3 Evaluate how well the Criminal Records Bureau (CRB) safeguards vulnerable people.

-
.....
.....
.....
.....
.....
.....
.....
.....
.....
.....
.....
.....
.....
..... [6]

4 Give **three** basic procedures to prevent the spread of infection in care settings.

- 1
-
- 2
-
- 3
- [3]

5 A resident at a nursing home has died.

Describe how you should dispose of soiled bedding.

.....

.....

.....

.....

Describe how you should dispose of unused medication.

.....

.....

.....

..... [4]

- 6 Different coloured chopping boards are used to prepare different types of foods.

Match the foods to the correct coloured chopping boards.

A Cooked meat

B Raw meat

C Raw fish

D Fruit and vegetables

Blue

Green

Yellow

Red [4]

- 7 Explain how using food preparation equipment correctly can contribute to good food hygiene practices.

.....

.....

.....

.....

.....

.....

.....

.....

.....

.....

..... [5]

- 8 State the **three** basic principles of first aid.

1

2

3 [3]

9 Give **three** signs or symptoms of a fractured leg.

- 1
- 2
- 3 [3]

10 Identify **two** pieces of information that should be given when calling the emergency services. Why is each piece of information important?

- 1
- Why important
-
- 2
- Why important
- [4]

11 You arrive at a road traffic incident where there are two casualties. One casualty is quiet and not moving, the other is shouting and screaming.

Explain how you should prioritise needs.

-
-
-
-
-
-
-
- [4]

- 12** Explain how safety/warning signs help to keep individuals safe.

.....

.....

.....

..... [2]

- 13** COSHH is a regulation covered by the Health and Safety at Work Act 1974.

What do the initials COSHH stand for?

.....

..... [1]

- 14** Identify **three** security measures that could be used in a day nursery. What is the purpose of each security measure?

1

Purpose

.....

2

Purpose

.....

3

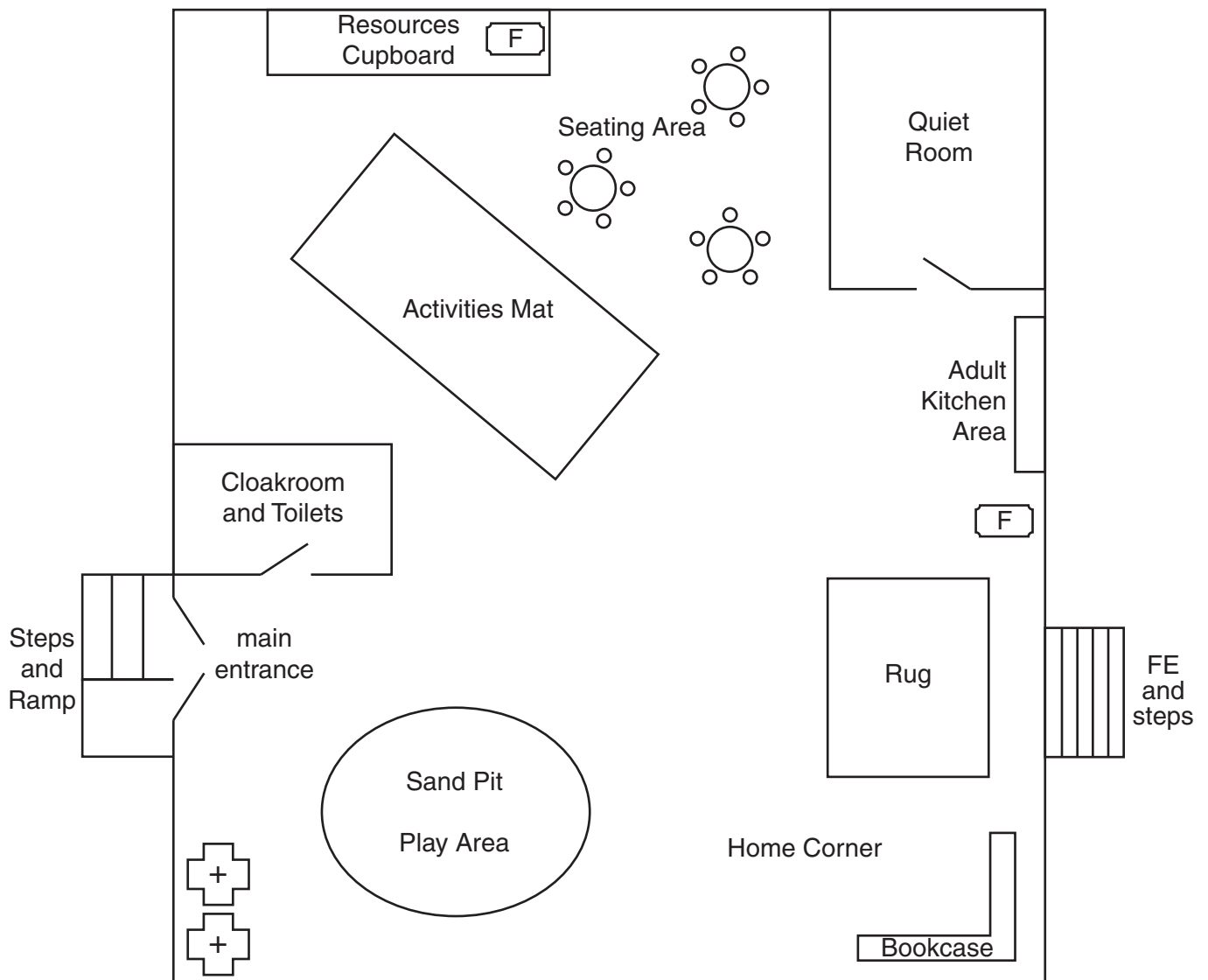
Purpose

..... [6]

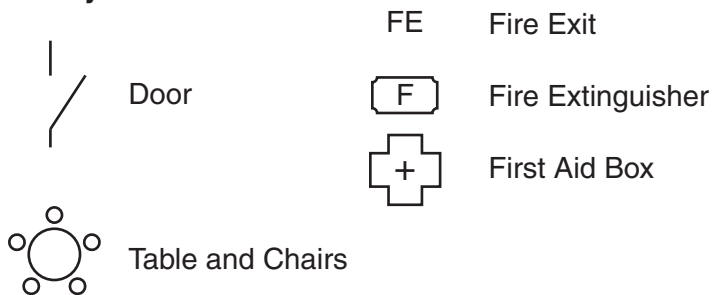
BLANK PAGE

PLEASE DO NOT WRITE ON THIS PAGE

Plan of Children's Playgroup



Key



15 Carry out a risk assessment for the Children's Playgroup. You need to:

- look for hazards
- think about who may be harmed
- consider the risks – whether precautions are adequate.

[8]

Please use these pages if additional space for answers is required.

[illegible]

Copyright Information

OCR is committed to seeking permission to reproduce all third-party content that it uses in its assessment materials. OCR has attempted to identify and contact all copyright holders whose work is used in this paper. To avoid the issue of disclosure of answer-related information to candidates, all copyright acknowledgements are reproduced in the OCR Copyright Acknowledgements Booklet. This is produced for each series of examinations and is freely available to download from our public website (www.ocr.org.uk) after the live examination series. If OCR has unwittingly failed to correctly acknowledge or clear any third-party content in this assessment material, OCR will be happy to correct its mistake at the earliest possible opportunity.

For queries or further information please contact the Copyright Team, First Floor, 9 Hills Road, Cambridge CB2 1GE.

OCR is part of the Cambridge Assessment Group; Cambridge Assessment is the brand name of University of Cambridge Local Examinations Syndicate (UCLES), which is itself a department of the University of Cambridge.