

Surname						Other Names					
Centre Number						Candidate Number					
Candidate Signature											

Leave blank

General Certificate of Secondary Education
June 2005

GEOGRAPHY (SPECIFICATION A)
Foundation Tier
Paper 1

3031/1F



Monday 6 June 2005 9.00 am to 10.45 am

F

In addition to this paper you will require:

- the Ordnance Survey map extract (enclosed);
- the colour insert (enclosed).

You may use a calculator.

Time allowed: 1 hour 45 minutes

Instructions

- Use blue or black ink or ball-point pen. You may use pencil for maps, diagrams and graphs.
- Fill in the boxes at the top of this page.

- **SECTION A – Skills**
Answer **ALL** questions.
- **SECTION B – People and the Natural Environment**
Answer **THREE** questions only.

- Do all rough work in this book. Cross through any work you do not want marked.
- If you need extra paper, use the Supplementary Answer Sheets.

Information

- The maximum mark for this paper is 70.
- Mark allocations are shown in brackets.
- You will be assessed on your ability to:
 - present relevant information in a form and style that suits its purpose;
 - ensure that text is legible and that spelling, punctuation and grammar are accurate;
 - use specialist vocabulary, where appropriate.
- LEDC is a Less Economically Developed Country.
- MEDC is a More Economically Developed Country.

For Examiner's Use			
Number	Mark	Number	Mark
1			
2			
3			
4			
5			
6			
7			
8			
9			
10			
Total (Column 1) →			
Total (Column 2) →			
TOTAL			
Examiner's Initials			

SECTION A

Answer **ALL** questions in Section A.

1

Total for this question: 13 marks

Study **Figure 1**, the Ordnance Survey map extract of Reading in southern England.

- (a) Give the **four figure** grid reference for the principal railway station in Reading.

.....
(1 mark)

- (b) Name the symbol found at grid reference 670724.

.....
(1 mark)

- (c) Measure the distance along the M4 between the motorway service area in grid square 6769 and the western edge of the map.
Give your answer to the nearest whole kilometre.

..... kilometres
(2 marks)

- (d) Give the highest point in metres in grid square 7378.

..... metres
(1 mark)

- (e) Complete the following paragraph. It describes a journey along the M4 between junctions 12 and 11.

Cross out the **incorrect** word(s) so that the sentences are correct.

From Junction 12 the car headed **south-west** / **south-east** towards Junction 11.

After 0.7 kilometres the car crossed the **railway line** / **Holy Brook river**.

Much of the journey was across **flat** / **sloping** land past a series of **villages** / **lakes**.

(4 marks)

- (f) Describe the land uses in grid square 7877.

.....

.....

.....

.....

.....

.....

.....

.....

(4 marks)

2

Total for this question: 6 marks

Study **Figure 1**, the Ordnance Survey map extract, and **Figure 2**, on the insert, an aerial photograph of Reading.

- (a) Name the land uses shown at **X**, **Y** and **Z** on the aerial photograph.

X

Y

Z

(3 marks)

- (b) Suggest **one** reason why settlement has avoided the area in the zone marked **Q**.

.....

.....

(1 mark)

- (c) Suggest **two** pieces of evidence that the photograph was taken in the summer.

1

.....

2

.....

(2 marks)

Turn over ►

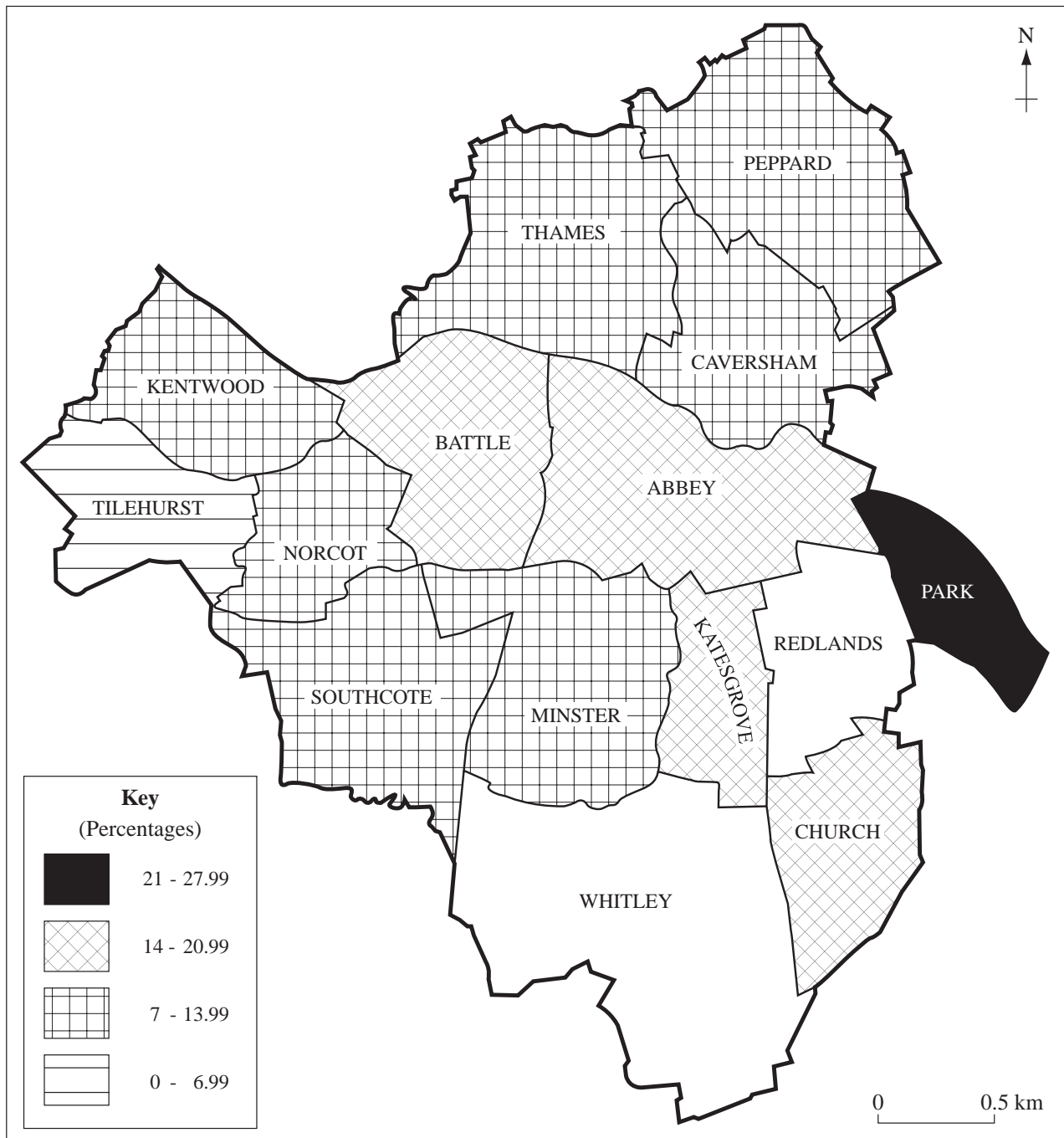
13

6

3

Total for this question: 6 marks

Study **Figure 3**, which shows the percentage of people living in different areas of Reading who were born outside the UK.

**Figure 3**

- (a) Complete **Figure 3** by using the percentages below to shade the areas of Redlands and Whitley.

Redlands 21.5%
Whitley 6.9%

(2 marks)

- (b) Using **Figure 3**, describe the distribution of people born outside the UK in Reading.

.....

.....

.....

.....

.....

.....

.....

.....

(4 marks)

6

TURN OVER FOR THE NEXT QUESTION

Turn over ►

SECTION B

Answer **THREE** questions only in this section.

4 Tectonic Activity

Total for this question: 15 marks

Study **Figure 4**, which shows the distribution of major earthquakes.

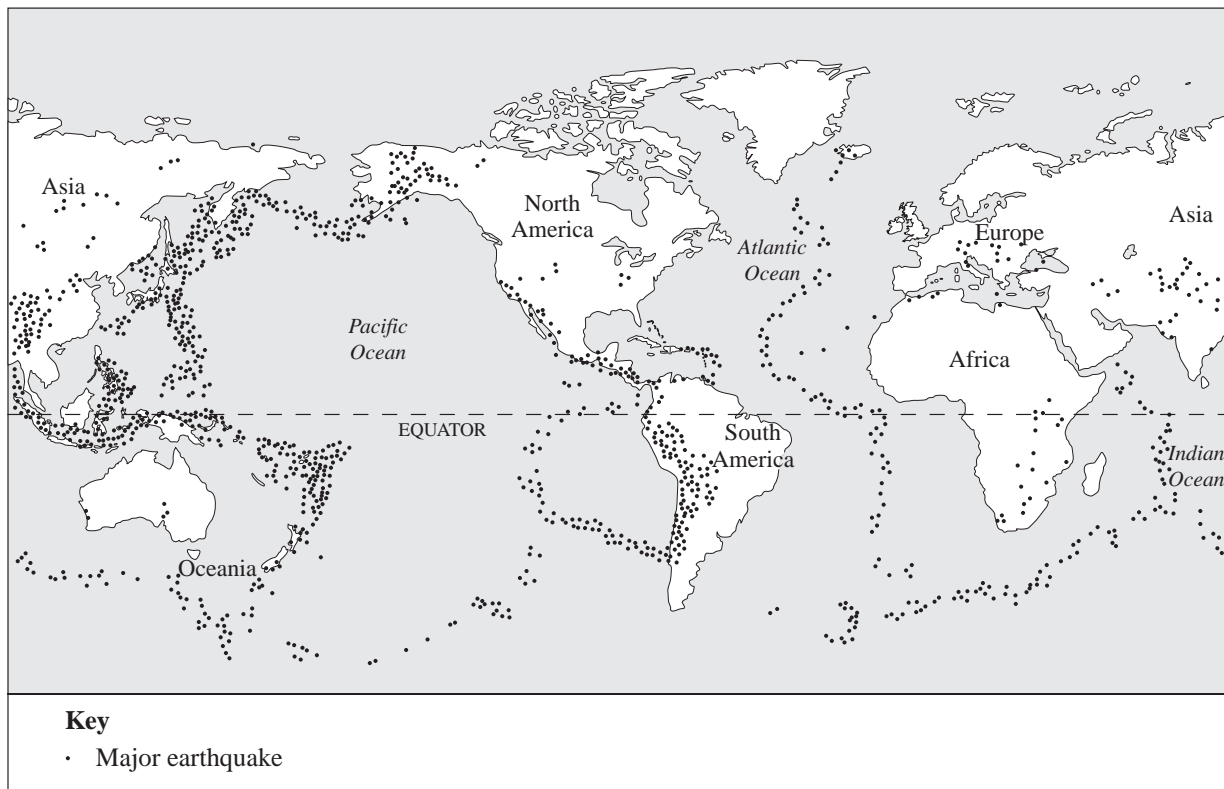


Figure 4

- (a) (i) Tick the correct box to show whether each of the following statements is true or false.

	True	False
Many earthquakes have occurred around the edges of the Pacific Ocean.	<input type="checkbox"/>	<input type="checkbox"/>
There have been many earthquakes in Northern Europe.	<input type="checkbox"/>	<input type="checkbox"/>
There is a line of earthquakes through the middle of the Atlantic Ocean.	<input type="checkbox"/>	<input type="checkbox"/>

(3 marks)

- (ii) Explain the distribution of the earthquakes shown in **Figure 4**.

.....

.....

.....

.....

(2 marks)

QUESTION 4 CONTINUES ON THE NEXT PAGE

Turn over ►

(b) Study **Figure 5**, which shows a cross-section through an area affected by an earthquake.

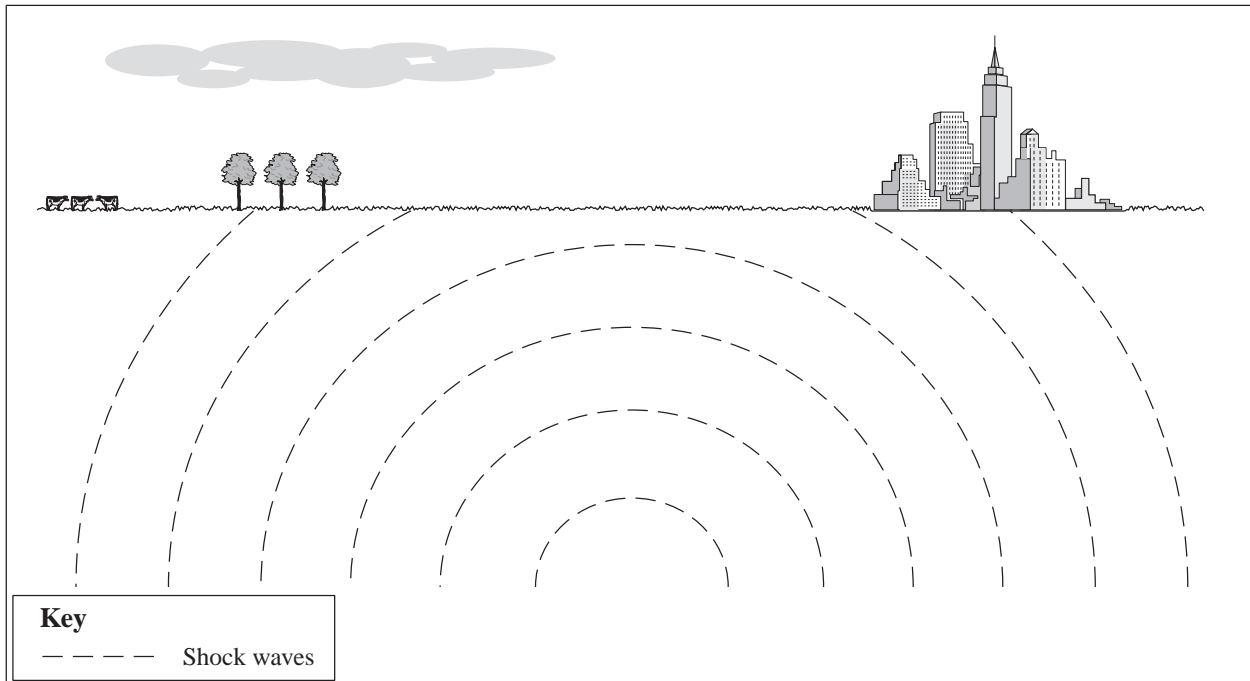


Figure 5

(i) On **Figure 5**, clearly mark and label the following:

Focus
Epicentre

(2 marks)

- (ii) Place the letter **D** on **Figure 5** where you would expect the greatest loss of life to occur from the earthquake.

(1 mark)

- (iii) Explain your chosen location for the letter **D**.

.....

.....

.....

.....

.....

.....

(3 marks)

- (c) For an earthquake **or** volcanic eruption you have studied, describe the ways in which people responded to the disaster.

.....

.....

.....

.....

.....

.....

.....

.....

(4 marks)

15

TURN OVER FOR THE NEXT QUESTION

Turn over ►

5 Rocks and Landscapes**Total for this question: 15 marks**

- (a) Tick the correct box to show whether the following statements about sedimentary rocks are true or false.

	True	False
Sedimentary rocks may be formed under water.	<input type="checkbox"/>	<input type="checkbox"/>
Chalk is an example of a sedimentary rock.	<input type="checkbox"/>	<input type="checkbox"/>
Sedimentary rocks have been changed by heat and pressure.	<input type="checkbox"/>	<input type="checkbox"/>

(3 marks)

- (b) Study **Figure 6**, which shows a chalk escarpment.

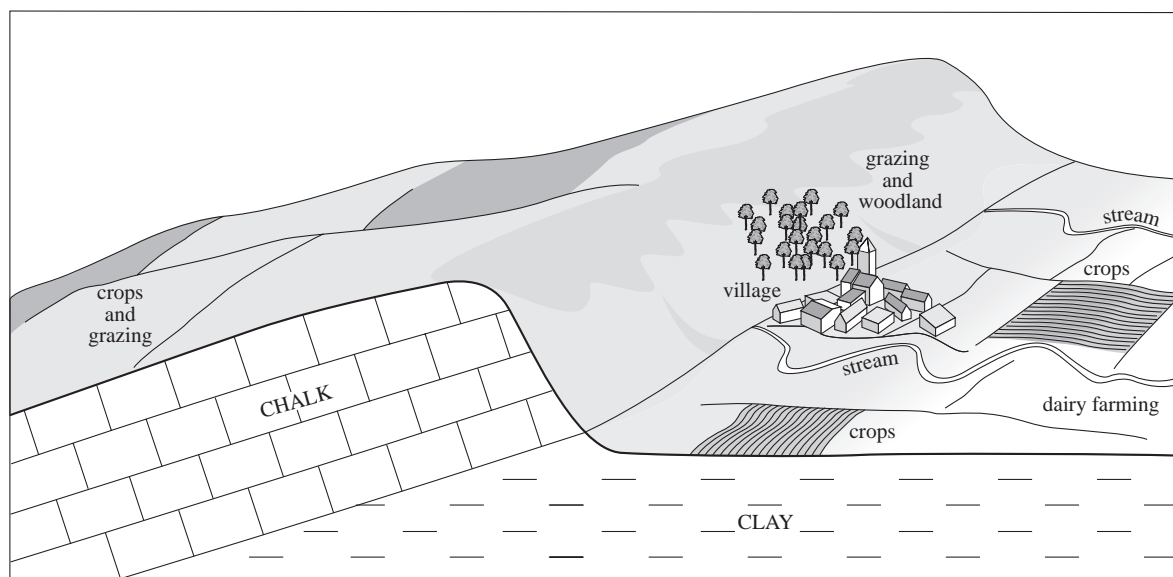


Figure 6

- (i) On **Figure 6**, clearly mark and label the following:

Scarp slope
Dip slope

(2 marks)

- (ii) Suggest reasons for the location of the village shown in **Figure 6**.

.....

.....

.....

.....

.....

.....

.....

.....

(4 marks)

- (c) Study **Figure 7**, on the insert, which shows a quarry in a limestone area.

- (i) Describe the main features of the quarry.

.....

.....

.....

.....

.....

.....

(3 marks)

- (ii) Explain the disadvantages of a quarry to the local area.

.....

.....

.....

.....

.....

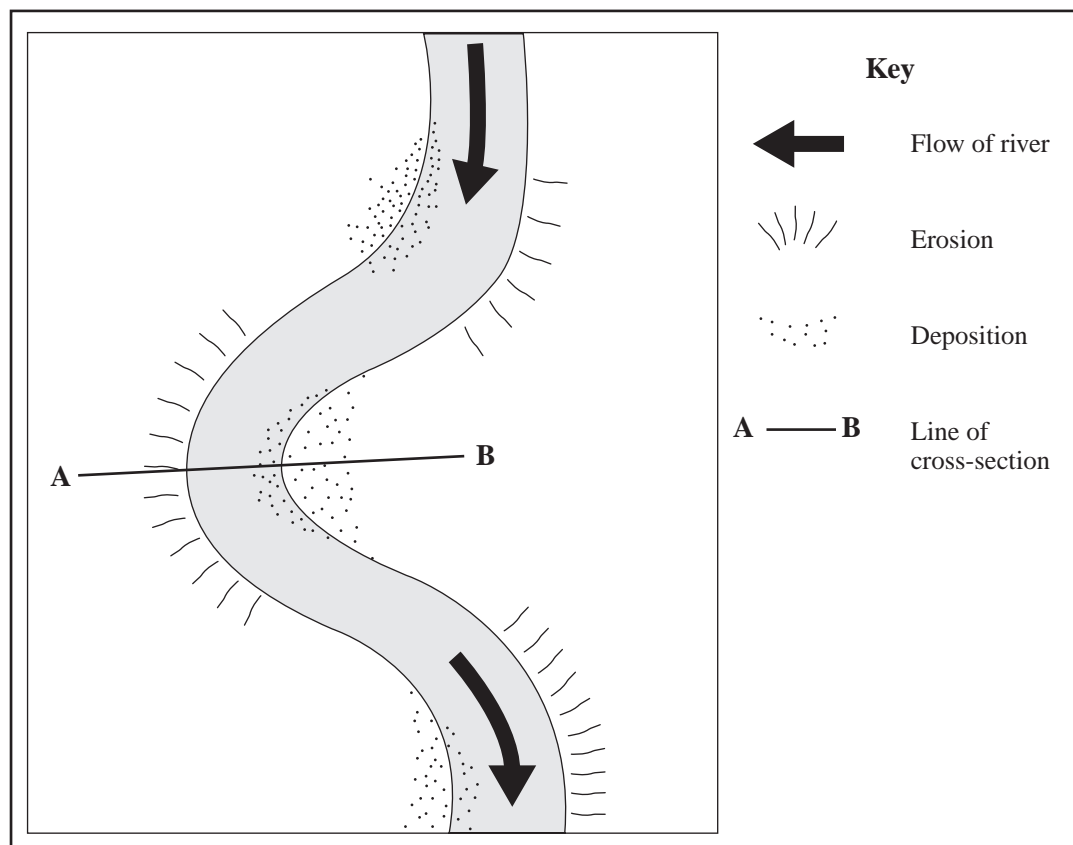
.....

(3 marks)

Turn over ►

6 River Landscapes**Total for this question: 15 marks**

- (a) Study **Figure 8**, which shows part of a meandering river.

**Figure 8**

- (i) What is a meander?

.....

.....

(1 mark)

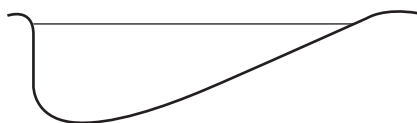
- (ii) On **Figure 8**, mark with an arrow and label the following:

a slip-off slope
a river cliff

(2 marks)

- (iii) Which of the following diagrams best shows the river's cross-section at **A–B** on **Figure 8**?

Tick **one** box only.


☐

☐

☐

(1 mark)

- (iv) Explain how a slip-off slope and a river cliff are formed.

.....

.....

.....

.....

.....

.....

.....

.....

(4 marks)

QUESTION 6 CONTINUES ON THE NEXT PAGE

Turn over ►

- (b) Study the list below of ways in which floods may be managed.
Tick **one** box for each method to show whether it is a hard or soft engineering strategy.

	Hard engineering	Soft engineering
Building dams.	<input type="checkbox"/>	<input type="checkbox"/>
Flood plain zoning.	<input type="checkbox"/>	<input type="checkbox"/>
Raising the height of levées.	<input type="checkbox"/>	<input type="checkbox"/>

(3 marks)

- (c) Study **Figure 9**, which shows flood plain zoning.

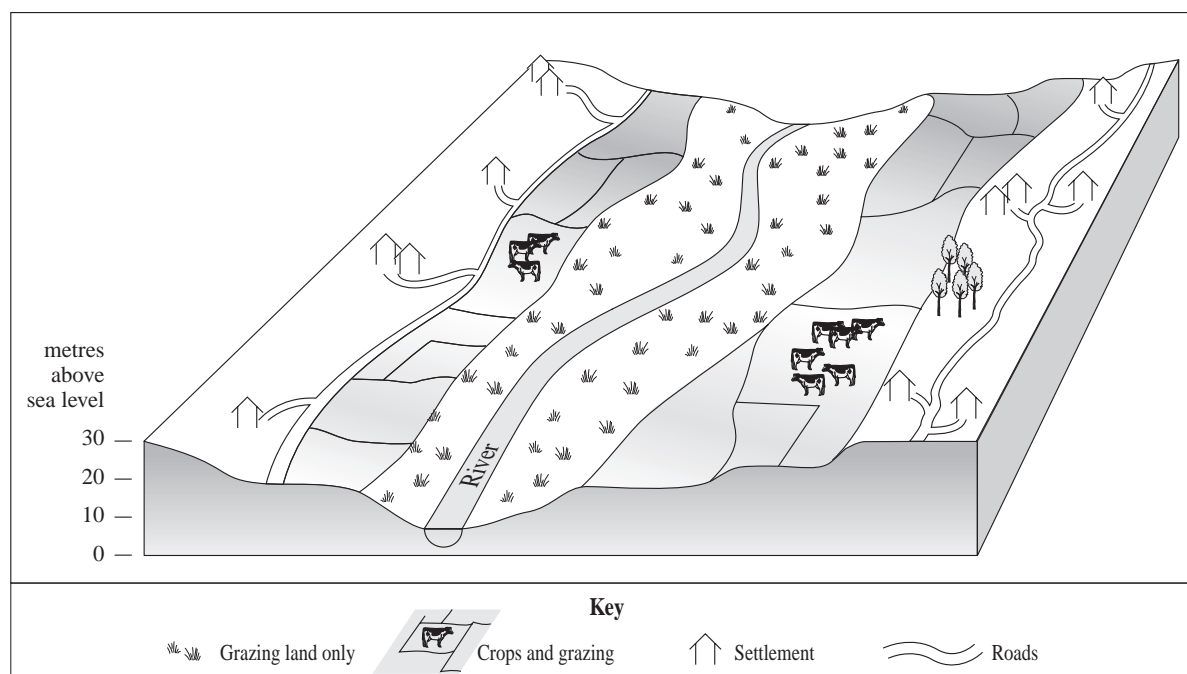


Figure 9

- (i) Name the land use found closest to the river.

.....

(1 mark)

- (ii) Explain why settlements and roads are much further away from the river.

.....

.....

.....

.....

.....

.....

(3 marks)

15

TURN OVER FOR THE NEXT QUESTION

Turn over ►

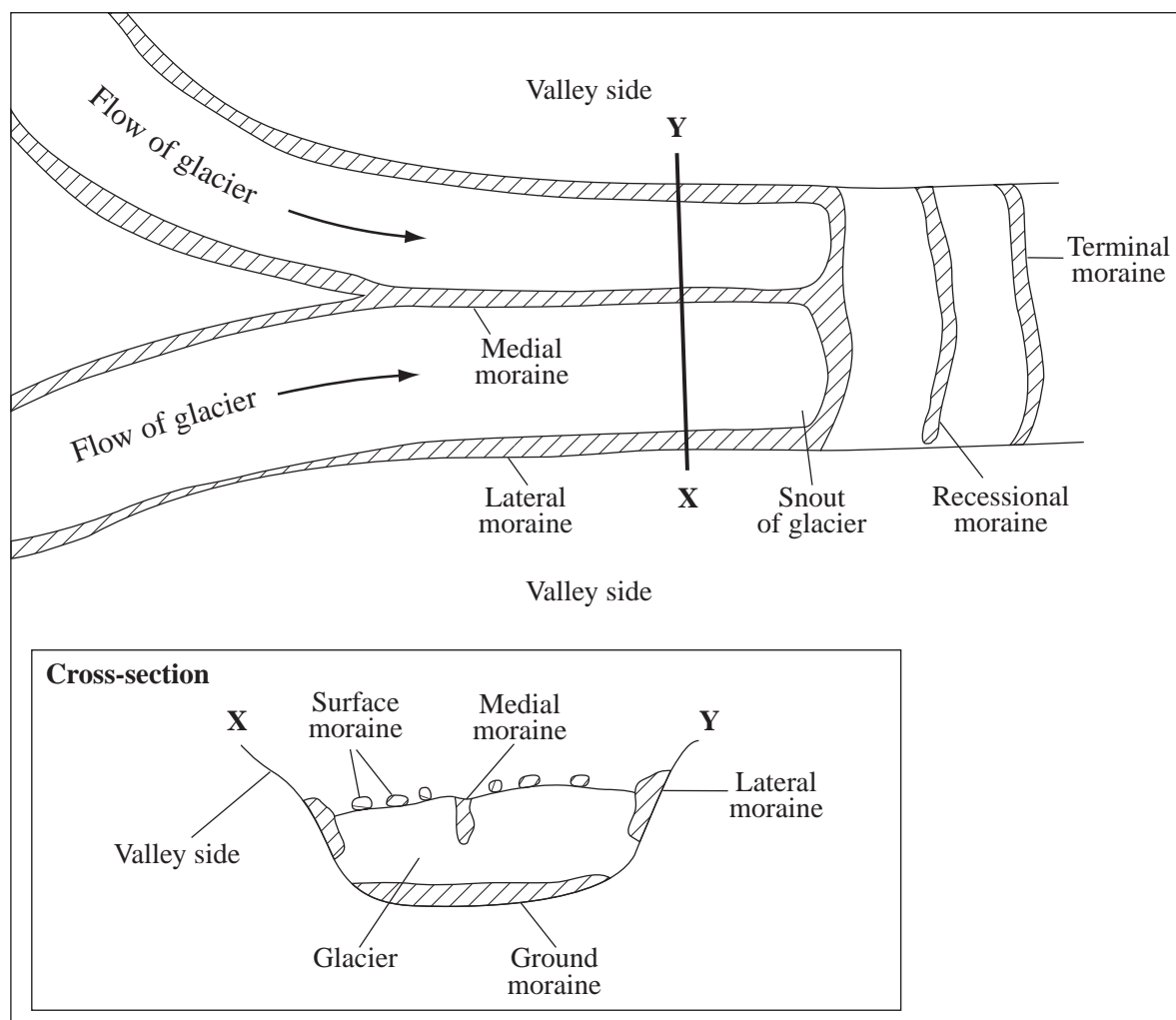
7 Glacial Landscapes**Total for this question: 15 marks**

- (a) Study the list of glacial features below. Tick the correct box to show whether each glacial feature is formed by erosion or deposition.

	Erosion	Deposition
Corrie	<input type="checkbox"/>	<input type="checkbox"/>
Hanging valley	<input type="checkbox"/>	<input type="checkbox"/>
Drumlin	<input type="checkbox"/>	<input type="checkbox"/>

(3 marks)

- (b) Study **Figure 10**, which shows some glacial moraines.

**Figure 10**

- (i) Which moraine was formed at the furthest point the ice reached?

.....
.....
(1 mark)

- (ii) Explain the formation of **one** type of glacial moraine.

Type of moraine:
.....
.....
.....
.....
.....
.....
.....
.....
.....
(4 marks)

- (iii) What is boulder clay or till?

.....
.....
.....
.....
(2 marks)

QUESTION 7 CONTINUES ON THE NEXT PAGE

Turn over ►

(c) Study **Figure 11**, on the insert, which shows a tourist activity in a glaciated area in Iceland.

(i) Describe the activity on offer for the visitor.

.....
.....
(1 mark)

(ii) Give **two** advantages of tourism in glaciated areas.

1
.....
2
.....
(2 marks)

(iii) Explain **one** disadvantage of tourism in glaciated areas.

.....
.....
.....
.....
(2 marks)

8 Coastal Landscapes**Total for this question: 15 marks**

- (a) Study the list of coastal landforms below. Tick the correct box to show whether each coastal landform is formed by erosion or deposition.

	Erosion	Deposition
Cliff	<input type="checkbox"/>	<input type="checkbox"/>
Beach	<input type="checkbox"/>	<input type="checkbox"/>
Spit	<input type="checkbox"/>	<input type="checkbox"/>

(3 marks)

- (b) Study **Figure 12**, on the insert, which shows a coastline formed by erosion.

- (i) In the box below, draw a sketch to show the main features of **Figure 12**.

(2 marks)

- (ii) On your sketch, mark with an arrow and label the following:

an arch
a stack

*(2 marks)***QUESTION 8 CONTINUES ON THE NEXT PAGE****Turn over ►**

- (iii) Explain how and why the arch may change in the future.

.....

.....

.....

.....

.....

.....

.....

.....

(4 marks)

- (c) Study **Figure 13**, on the insert, which shows a type of coastal protection.

- (i) Describe the method of coastal protection shown.

.....

.....

.....

.....

(2 marks)

- (ii) Suggest how the method will protect the housing built along the coast.

.....

.....

.....

.....

(2 marks)

9 Weather and Climate**Total for this question: 15 marks**

- (a) Study **Figure 14**, which shows the pattern of temperature in Great Britain in July.

Map of British Isles showing patterns of temperature in Great Britain in July
- not reproduced here, due to third-party copyright constraints.

Figure 14

- (i) What is the lowest temperature shown on the map?

.....
(2 marks)

- (ii) Where are temperatures highest in Great Britain in July?

.....
.....
(1 mark)

- (iii) What is the temperature range shown on the map?

.....
(2 marks)

QUESTION 9 CONTINUES ON THE NEXT PAGE

Turn over ►

Study **Figure 15**, which shows the effect of latitude on temperature.

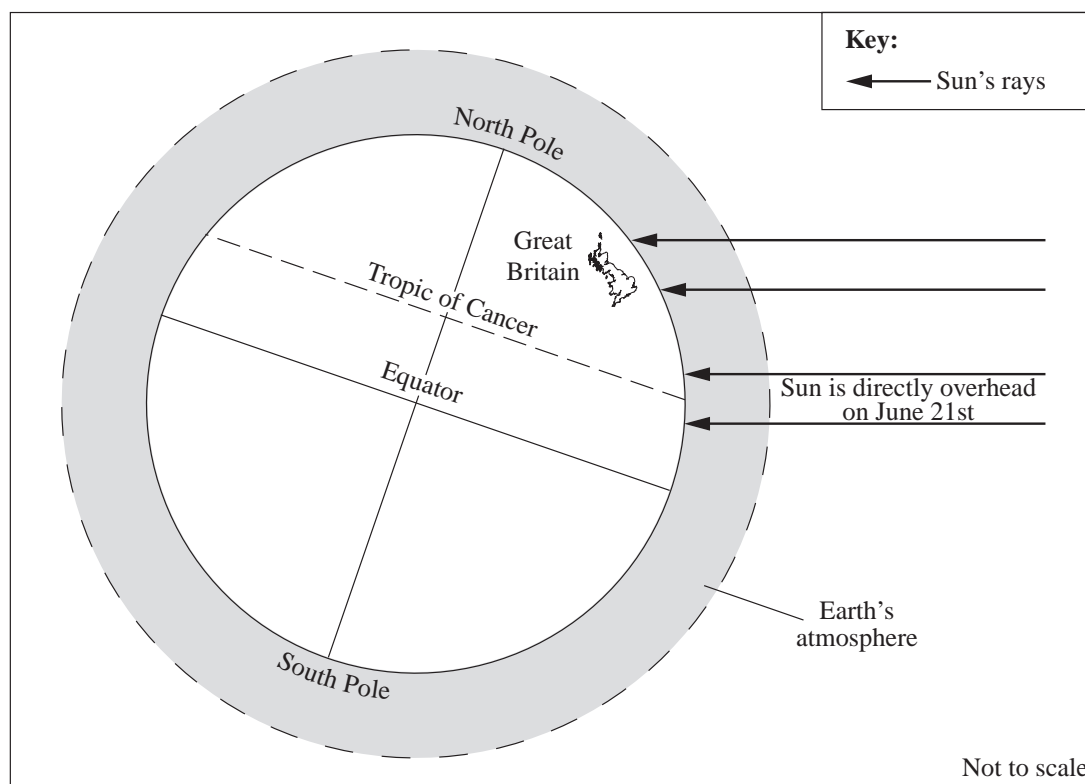


Figure 15

- (iv) Using **Figure 15**, explain why the south of Great Britain is warmer than the north in July.

.....

.....

.....

.....

.....

.....

(3 marks)

- (b) (i) For a drought in an LEDC you have studied, describe how it affected the local people.

.....

.....

.....

.....

.....

.....

(3 marks)

- (ii) Explain why the effects of drought are often more severe in an LEDC than in an MEDC.

.....

.....

.....

.....

.....

.....

.....

.....

(4 marks)

TURN OVER FOR THE NEXT QUESTION

15

Turn over ►

10 Ecosystems

Total for this question: 15 marks

- (a) Study **Figure 16**, which shows some of the characteristics of the soil and trees found in coniferous forests.

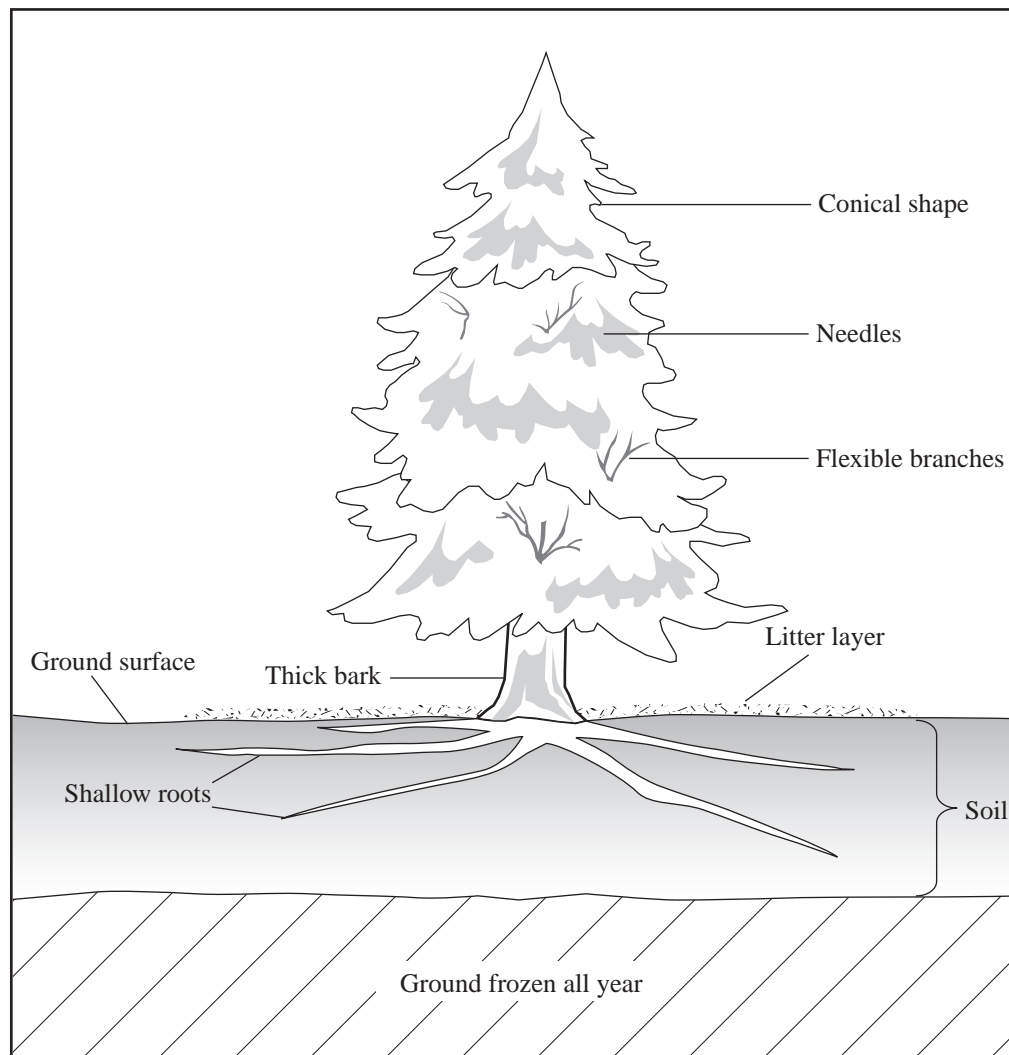


Figure 16

- (i) Which **one** of the following statements best describes the climate where coniferous forests grow?

Tick **one** box only.

The climate is hot and wet, with rainfall over 1500 mm per year.

True

☐

The climate is cold in winter, with rainfall below 750 mm per year.

☐

(1 mark)

- (ii) Describe how the coniferous tree in **Figure 16** is adapted to the climate.

.....

.....

.....

.....

.....

.....

(3 marks)

- (iii) Give **two** characteristics of the soil under coniferous forests.

1

.....

2

.....

(2 marks)

QUESTION 10 CONTINUES ON THE NEXT PAGE

Turn over ►

(b) Study **Figures 17a** and **17b**, on the insert, which show an area of tropical rainforest in 1975 and the same area in 1992.

(i) How do the colours on the satellite images show the amount of deforestation that has taken place between 1975 and 1992?

.....

.....

.....

.....

.....

.....

(3 marks)

(ii) Describe the effects that deforestation may have on soil and rivers.

.....

.....

.....

.....

.....

.....

.....

(4 marks)

(iii) Suggest **two** solutions that may reduce the amount of deforestation in the future.

1

.....

2

.....

(2 marks)

END OF QUESTIONS

15

THERE ARE NO QUESTIONS PRINTED ON THIS PAGE

ACKNOWLEDGEMENT OF COPYRIGHT-HOLDERS AND PUBLISHERS

Permission to reproduce all copyright material has been applied for. In some cases, efforts to contact copyright-holders have been unsuccessful and AQA will be happy to rectify any omissions of acknowledgement in future if notified.

Question 1, Figure 1: Ordnance Survey. Crown copyright.
Question 3, Figure 3: www.statistics.gov.uk/census 2001. Crown copyright material is reproduced with permission of the Controller of HMSO and the Queen's Printer for Scotland.
Question 4, Figure 4: C. Ollier, *Volcanoes* (Blackwell) 1988
Question 9, Figure 14: Weather and Climate Teaching Pack (KS4). Lesson 11: The British Climate (ARIC) 2002

Copyright © 2005 AQA and its licensors. All rights reserved.

General Certificate of Secondary Education
June 2005



GEOGRAPHY (SPECIFICATION A)

Paper 1 Foundation Tier

3031/1F

Colour Insert

F

Figure 2 (for use with Question 2).
Figure 7 (for use with Question 5).
Figure 11 (for use with Question 7).
Figure 12 (for use with Question 8).
Figure 13 (for use with Question 8).
Figure 17a (for use with Question 10).
Figure 17b (for use with Question 10).

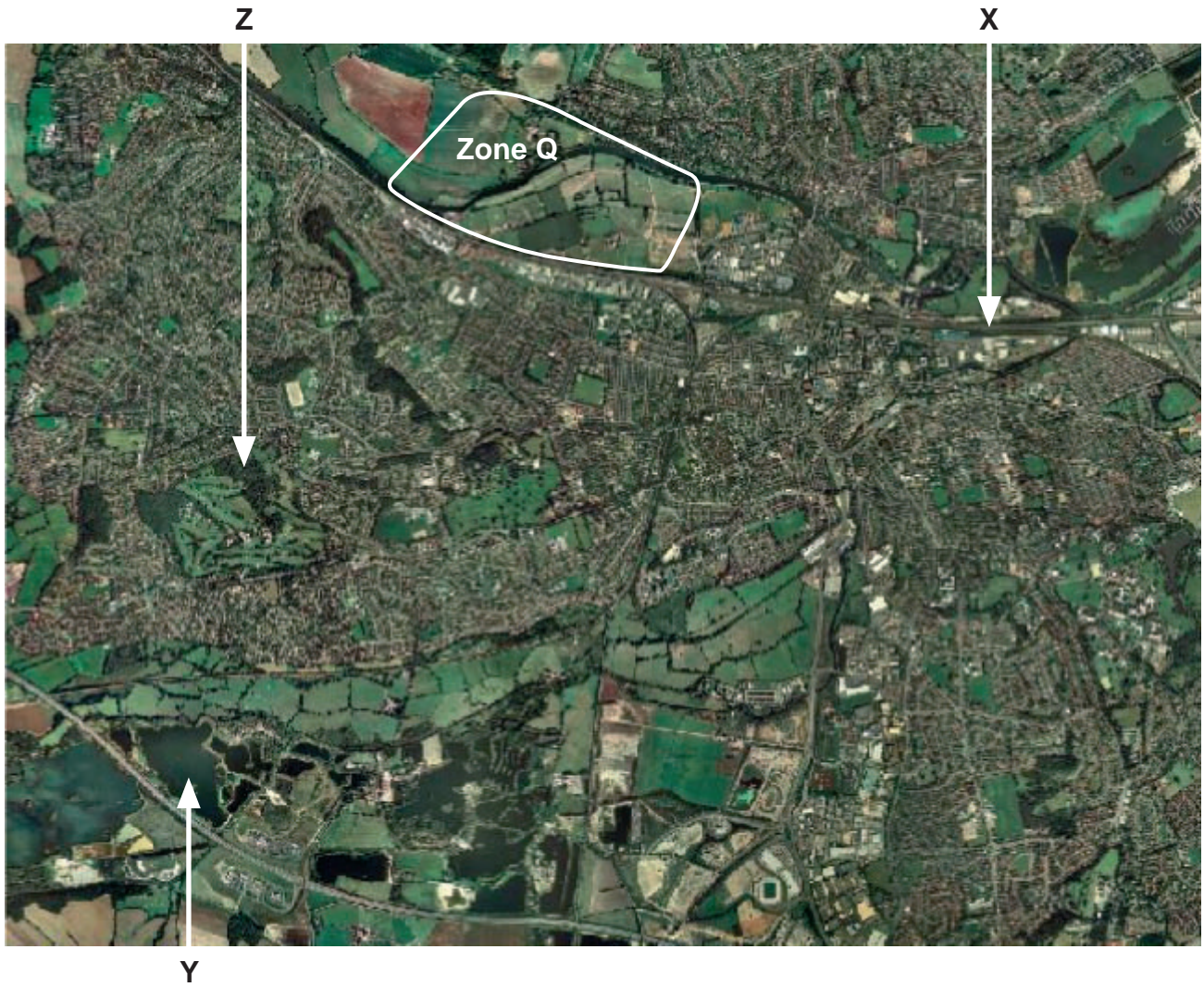


Figure 2



Figure 7



Figure 11



Figure 12



Figure 13

Turn over ►

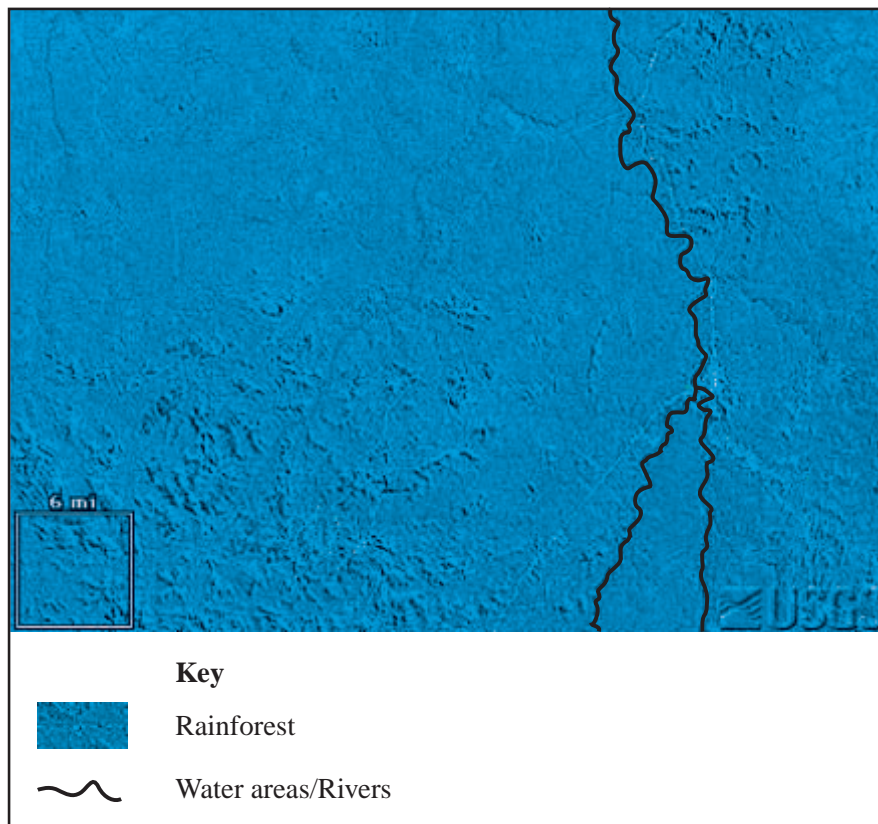


Figure 17a

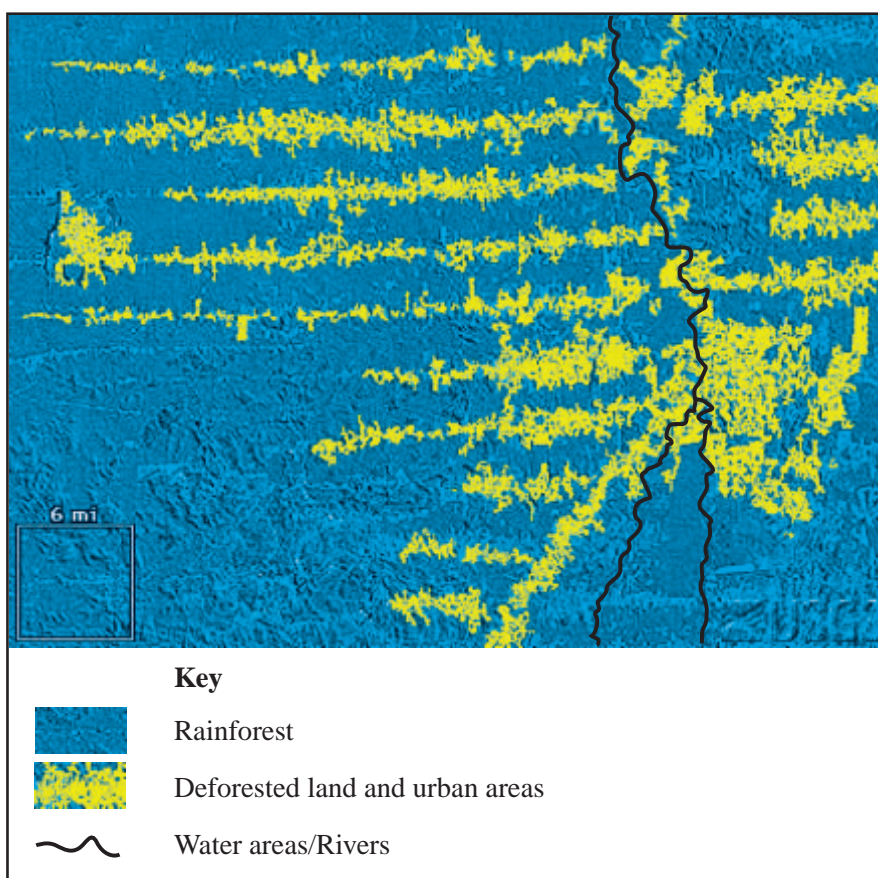


Figure 17b

NO TEXT APPEARS ON THIS PAGE

ACKNOWLEDGEMENT OF COPYRIGHT HOLDERS AND PUBLISHERS

Permission to reproduce all copyright material has been applied for. In some cases, efforts to contact copyright-holders have been unsuccessful and AQA will be happy to rectify any omissions of acknowledgements in future if notified.

Figure 2: © Getmapping plc

Figure 7: www.geology.wisc.edu

Figures 17a & 17b: [edc www.cr.usgs.gov/earthshots/](http://edcwww.cr.usgs.gov/earthshots/). USGS EROS Data Center.

Copyright © 2005 AQA and its licensors. All rights reserved.

NO TEXT APPEARS ON THIS PAGE