



OCRR

RECOGNISING ACHIEVEMENT

GENERAL CERTIFICATE OF SECONDARY EDUCATION

DESIGN AND TECHNOLOGY

GRAPHIC PRODUCTS (FULL COURSE)

GRAPHIC PRODUCTS (SHORT COURSE)

Paper 1 (Foundation Tier)

Candidates answer on the Question Paper

OCR SUPPLIED MATERIALS:  
None

OTHER MATERIALS REQUIRED:  
Drawing aids may be used

1955/01

1055/01

Friday 11 June 2010

Afternoon

DURATION: 1 hour 15 minutes

Candidate

Forename

Candidate

Surname

Centre Number

Candidate Number

SUITABLE FOR VISUALLY IMPAIRED CANDIDATES

INSTRUCTIONS TO CANDIDATES

- Write your name clearly in capital letters, your Centre Number and Candidate Number in the boxes above and on each of the A3 answer sheets inside this folder.
- Read each question carefully and make sure that you know what you have to do before starting your answer.
- Answer ALL the questions.
- Use black ink. Pencil may be used for any drawing, graphs and diagrams.
- ALL diagrams should be drawn accurately unless otherwise stated. Drawing aids may be used.
- Colour or shading should only be used if asked for in the question. Use your discretion where dimensions are not given.
- Do NOT write in the bar codes.
- Write your answer to each question in the space provided, however additional paper may be used if necessary.

INFORMATION FOR CANDIDATES

- The number of marks is given in brackets [ ] at the end of each question
- The total number of marks for this Section is 50.
- Dimensions are in mm unless stated otherwise.
- Marks will be awarded for the use of correct drawing conventions.

Examiners Use Only:			
1			
2			
3			
4			
5			
Total			



1 The freehand sketch on the right shows the logo of a company that makes products for tourists.

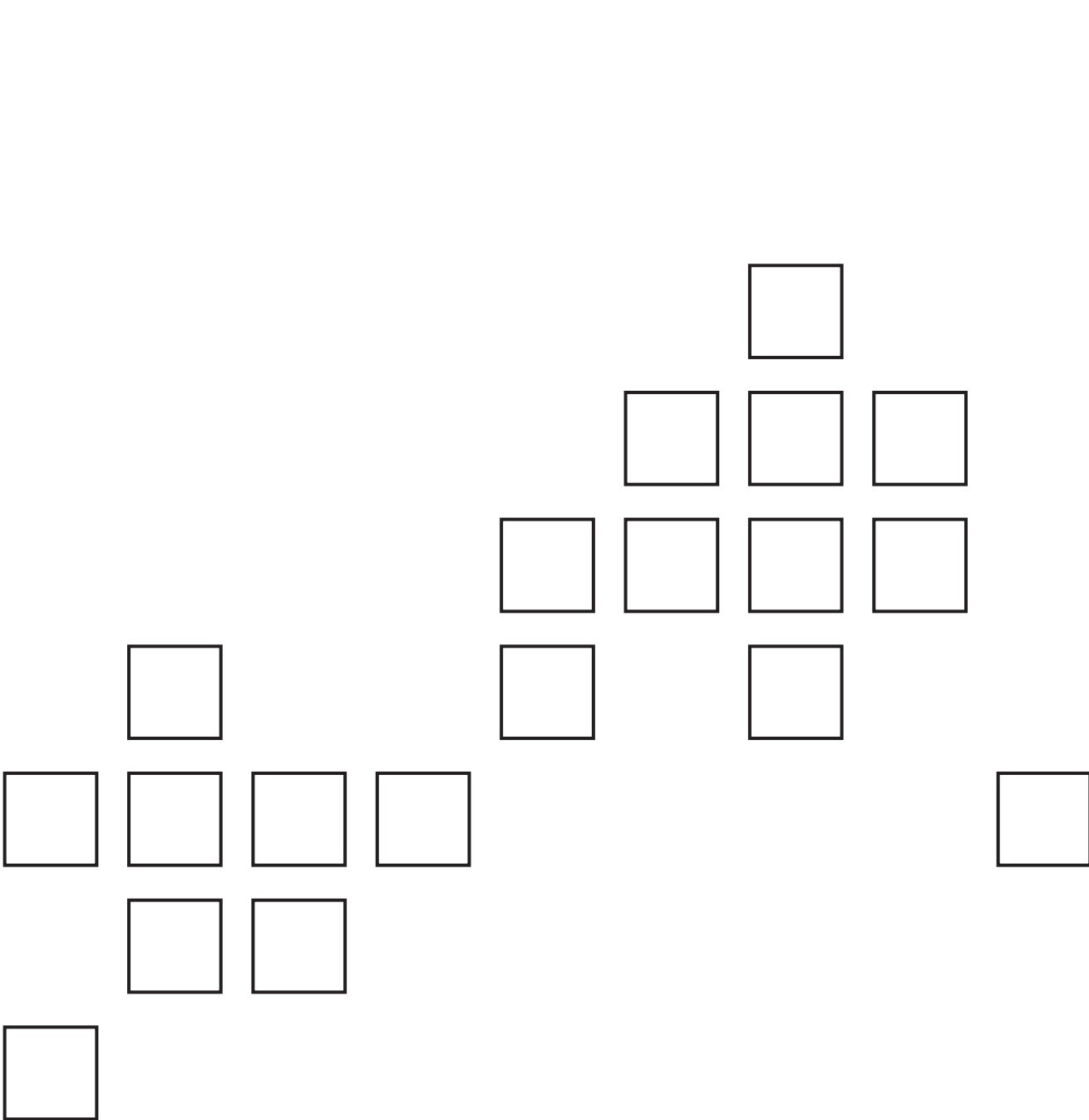
The logo is based on a simplified map of Britain.

(a) Use drawing instruments to complete the drawing of the logo shown below by:

(i) adding the three missing squares; [4]

(ii) drawing a rectangle size 190 mm x 150 mm around the logo. This has been started for you. [1]

Freehand sketch of a logo

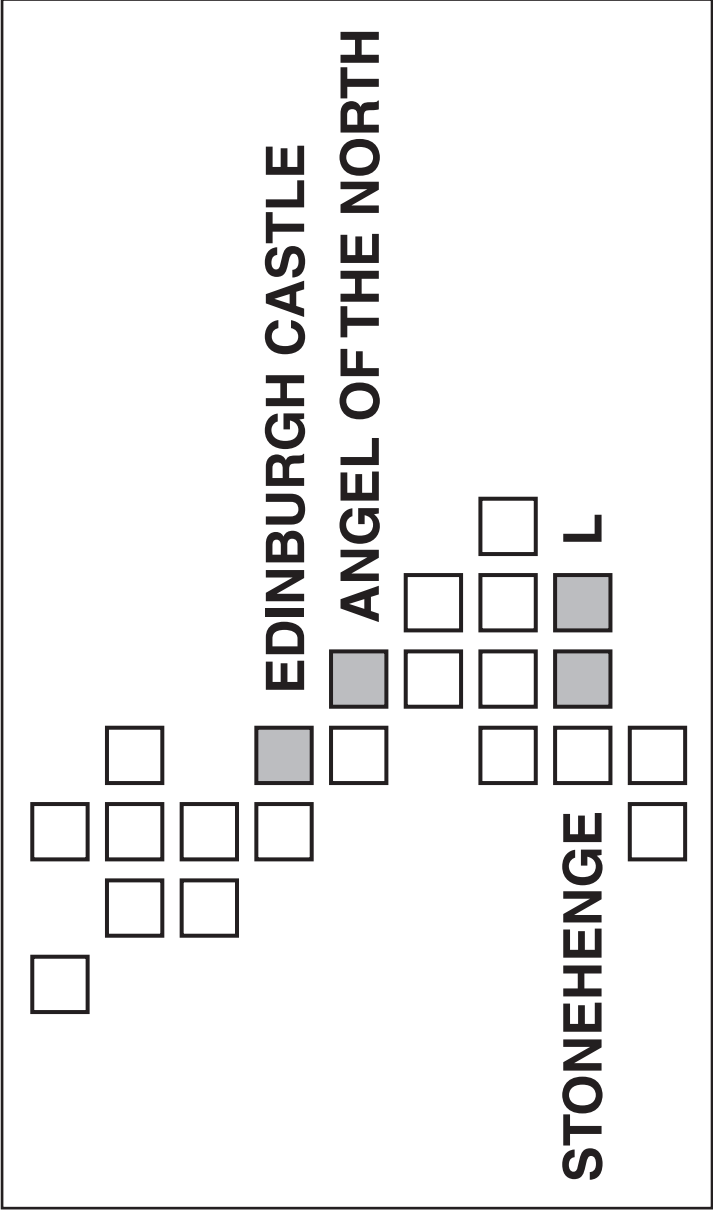


(b) The company will produce a leaflet giving information about places to visit in Britain. The leaflet will be made from a sheet of paper folded in half. [2]

Use a pictorial (3D) sketch to show how the paper should be folded.

(c) The drawing below shows the front cover of the leaflet. The shaded squares will be cut out so that photographs printed on the inside of the leaflet can be seen. [2]

Carefully print the words LONDON EYE in 5 mm capital letters. The letter L has been done for you.



(d) Tick (✓) the most appropriate method for cutting out the square holes on 100,000 copies of the leaflet. [1]

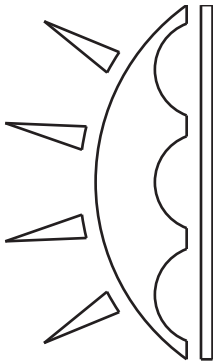
Scissors	Die cutting	Lithography	Computer

2 The company will design and make computer mouse mats.  
The designs will feature various tourist attractions.

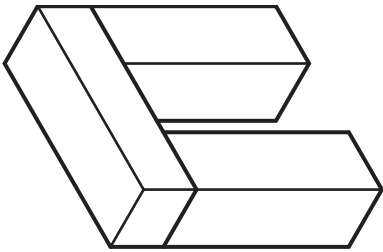
(a) A circle, a rectangle and an octagon have been  
considered as outline shapes for the mouse mats.

Complete the mouse mat designs shown by sketching:

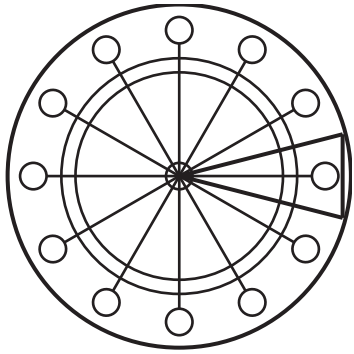
- (i) a rectangle around design B; [1]
- (ii) an octagon around design C. [1]



B  
The O2 Arena



C  
Stonehenge



A  
The London Eye  
Circular outline shape

(b) Explain why the circular and octagonal shaped mouse mats would be more expensive to  
produce than rectangular ones.

[2]

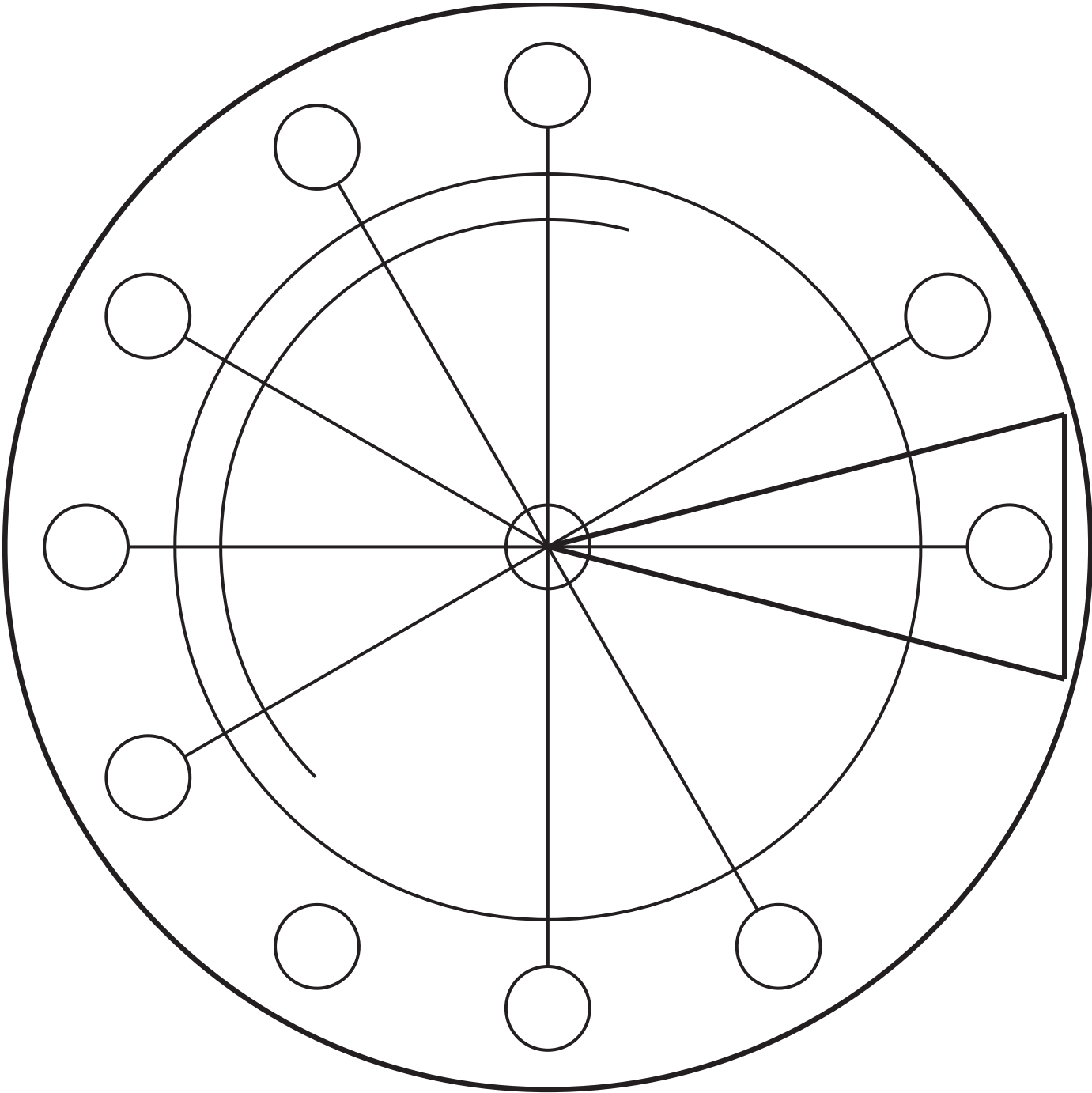
(c) Design A includes twelve 14 mm diameter circles.

Give ONE advantage of using a computer to produce a design which requires the same  
shape to be repeated several times.

Advantage

[1]

(d) Use drawing instruments to complete the full size drawing of Design A shown below. [4]



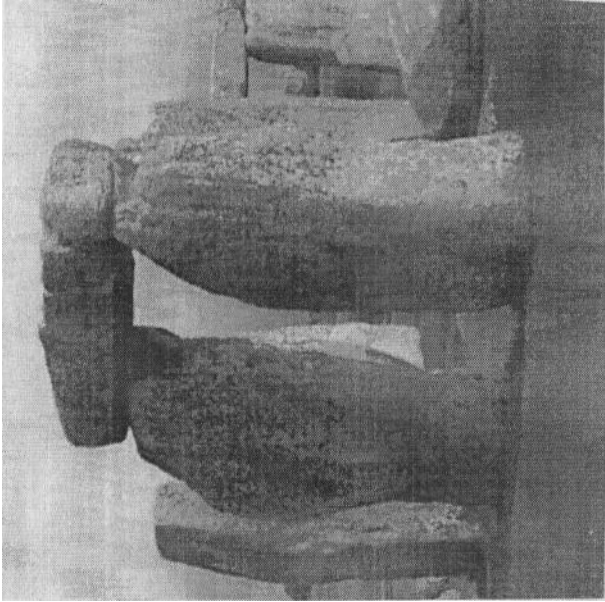
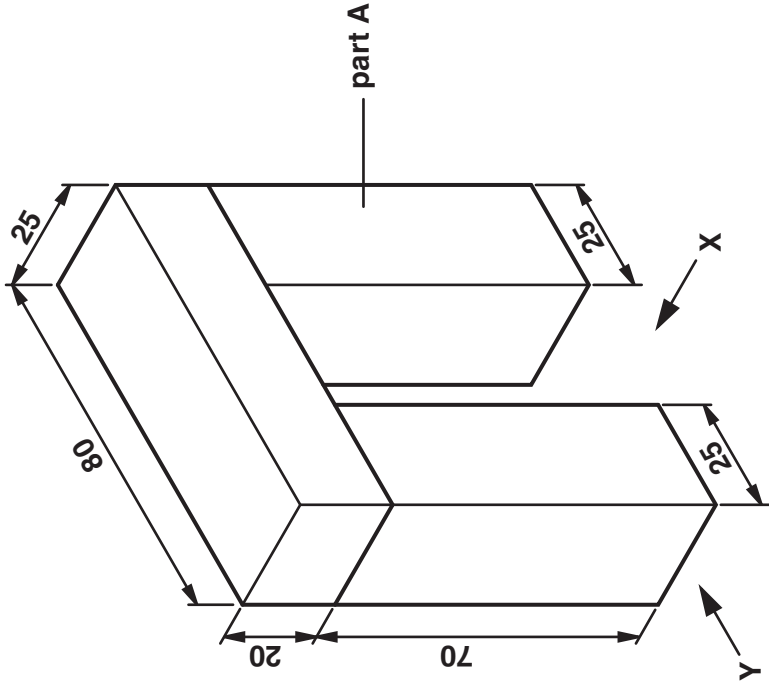
(e) The final drawing will be produced on a computer.  
A paper printout of the drawing will be glued to thin foam to make the mouse mat.  
State a way of protecting the surface of the paper printout from wear and damage in use.

[1]

3 A pictorial (3D) view of a model of part of Stonehenge is shown below.

(a) Add pencil shading to the drawing to enhance its 3D appearance.

[2]



Stonehenge

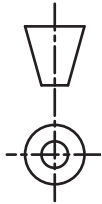
(b) Use drawing instruments to complete the orthographic views of the model by drawing a front view in the direction of arrow X.

[4]



End view  
in direction of arrow Y

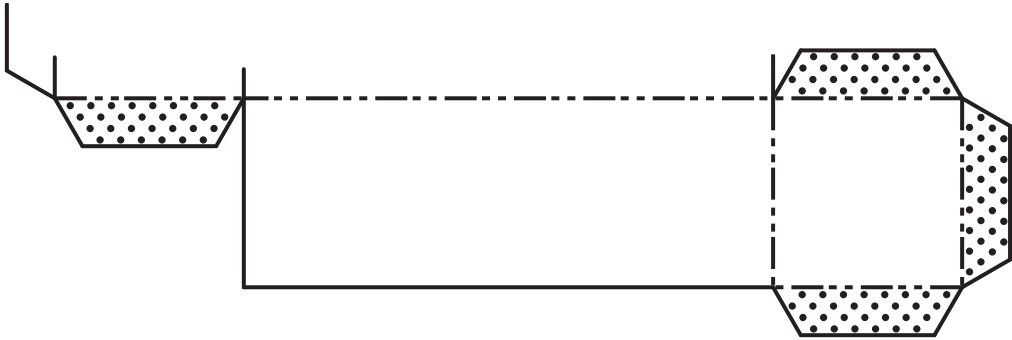
Front view  
in direction of arrow X



(c) Use drawing instruments to complete the drawing of the development (net) for part A of the model.

Clearly show cut lines, fold lines and glue tabs.

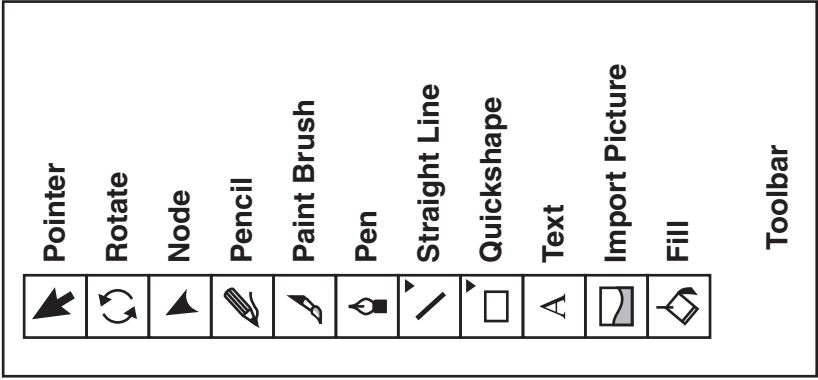
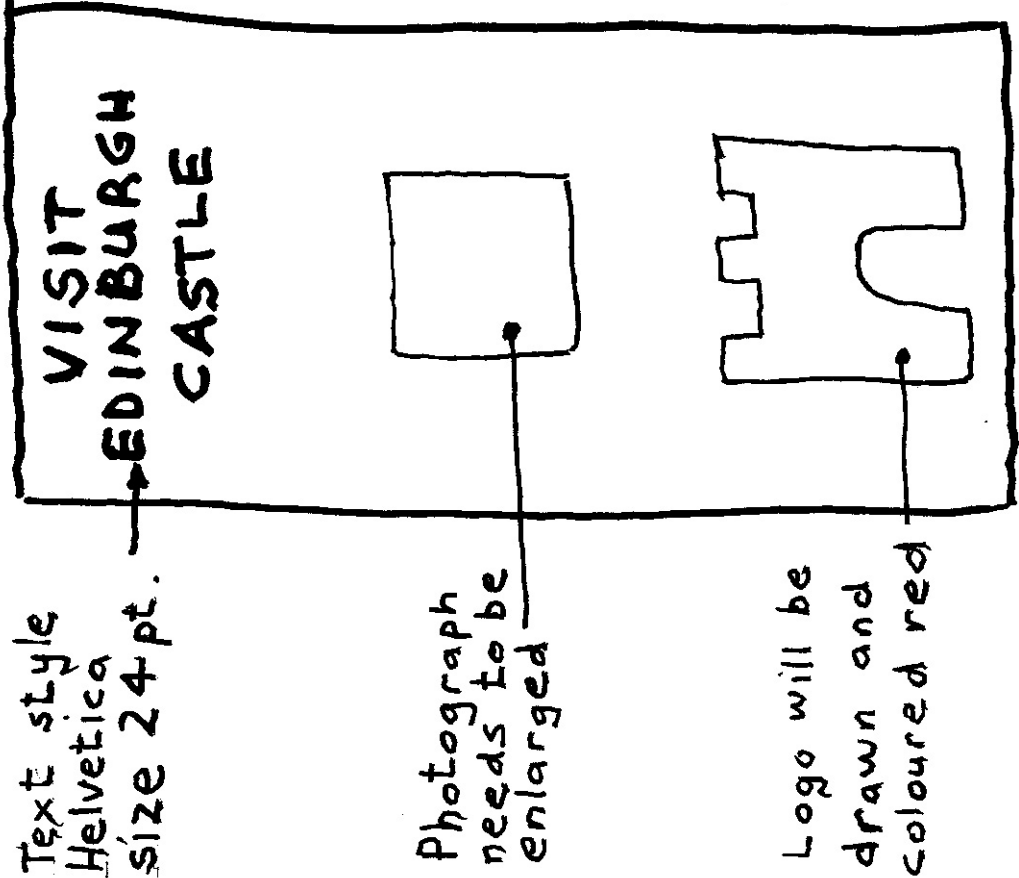
[4]



glue tabs  
fold lines  
cut lines

Development (net) of part A

4 The freehand sketch below shows an initial idea for the front of a leaflet about Edinburgh Castle.  
The final design will be produced on a computer using tools from the toolbar shown below.



(a) Tick (✓) the type of computer software that would be best to produce the final design. [1]

Spreadsheets	Database	CAM	2D CAD

(b) The logo will be used on a range of other products such as posters and packaging.

State TWO advantages of having the logo stored on a computer system when designing these products.

Advantage 1 \_\_\_\_\_ [1]

Advantage 2 \_\_\_\_\_ [1]

(c) State a method of importing a photograph taken with a digital camera into a computer system without printing the image.

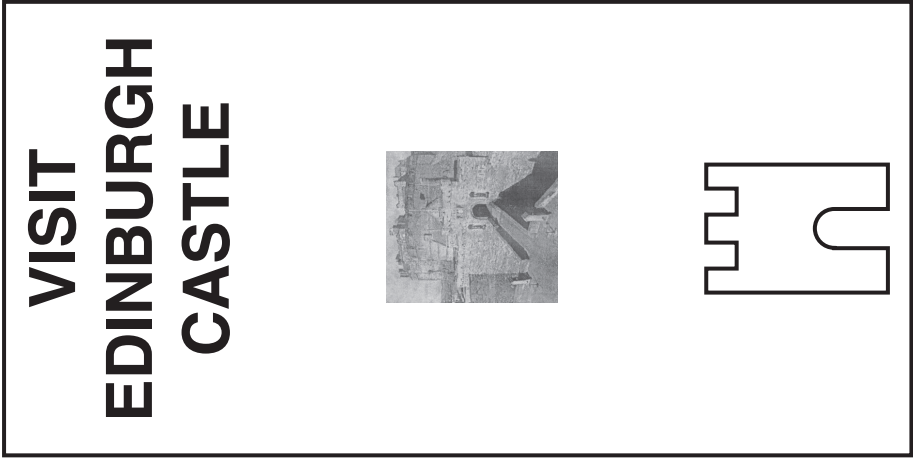
\_\_\_\_\_

\_\_\_\_\_

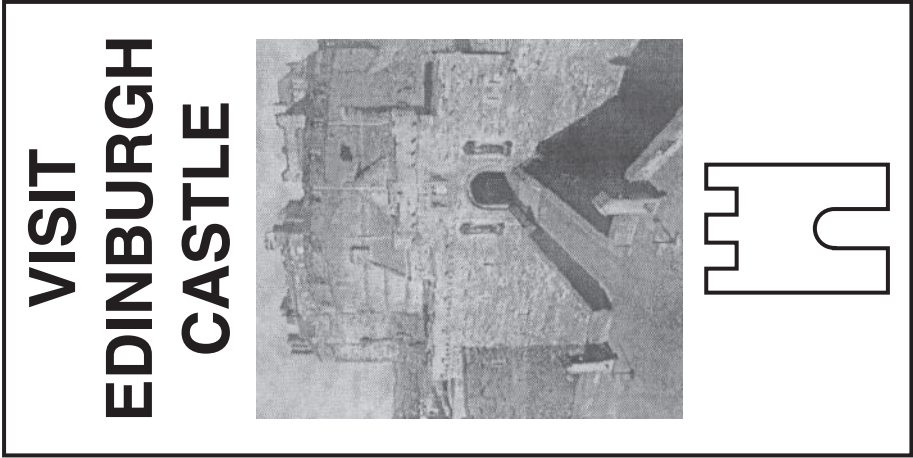
\_\_\_\_\_

\_\_\_\_\_ [1]

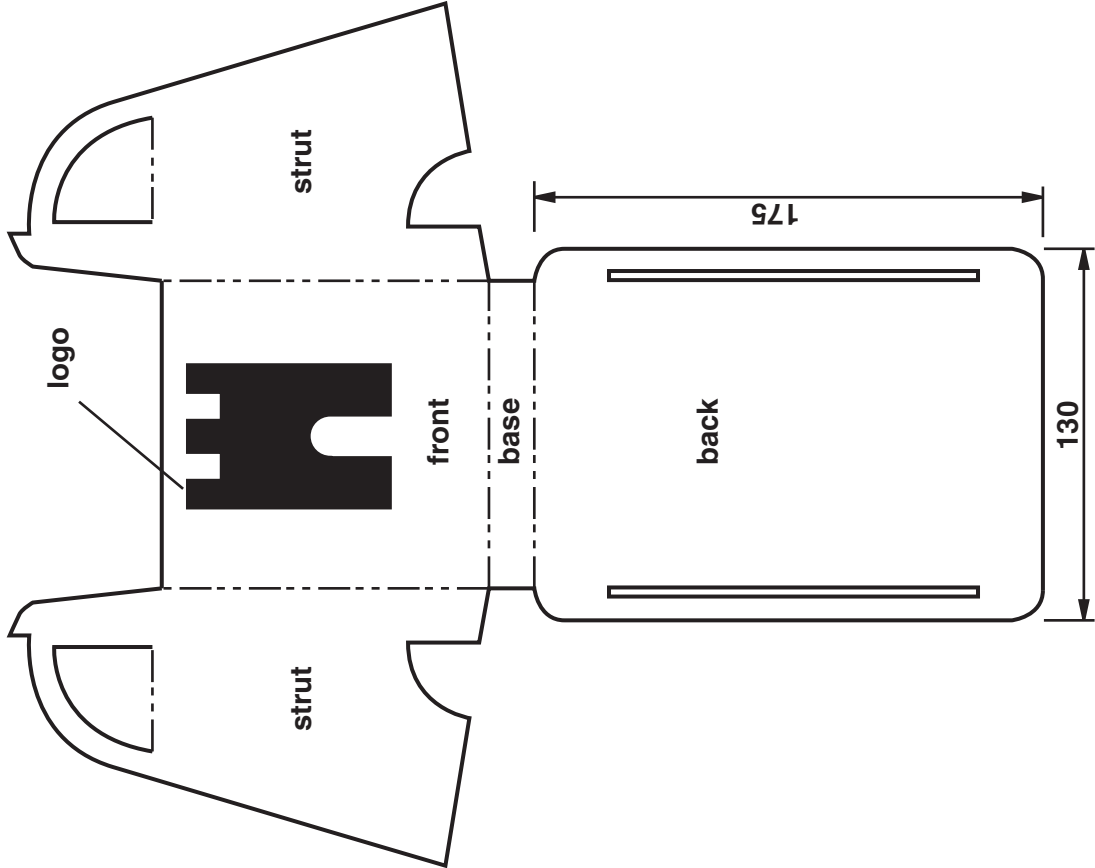
(d) Add sketches and notes to the given drawing to explain how the photograph would be enlarged using tools from the toolbar. [3]



(e) Add sketches and notes to the given drawing to explain how the logo would be coloured red using tools from the toolbar. [3]



- 5 The development (net) of a holder for leaflets about Edinburgh Castle is shown below.  
The leaflet holder is made from card.



- (a) State a suitable thickness of card for making the leaflet holder and give ONE reason for your choice.

Thickness of card \_\_\_\_\_ [1]

Reason for choice \_\_\_\_\_

\_\_\_\_\_ [1]

- (b) Sketch a pictorial (3D) view of the assembled leaflet holder.  
Do not draw the logo.

[4]

- (c) Use sketches and notes to describe how a stencil could be made and used to add the logo to the front of the leaflet holder.

[4]









COPYRIGHT INFORMATION

OCR is committed to seeking permission to reproduce all third-party content that it uses in its assessment materials. OCR has attempted to identify and contact all copyright holders whose work is used in this paper. To avoid the issue of disclosure of answer-related information to candidates, all copyright acknowledgements are reproduced in the OCR Copyright Acknowledgements Booklet. This is produced for each series of examinations, is given to all schools that receive assessment material and is freely available to download from our public website ([www.ocr.org.uk](http://www.ocr.org.uk)) after the live examination series.

If OCR has unwittingly failed to correctly acknowledge or clear any third-party content in this assessment material, OCR will be happy to correct its mistake at the earliest possible opportunity.

For queries or further information please contact the Copyright Team, First Floor, 9 Hills Road, Cambridge CB2 1GE.

OCR is part of the Cambridge Assessment Group; Cambridge Assessment is the brand name of University of Cambridge Local Examinations Syndicate (UCLES), which is itself a department of the University of Cambridge.