



UNSW
THE UNIVERSITY OF NEW SOUTH
SYDNEY • AUSTRALIA

StudentBounty.com

PAPER C

Practice
Questions



ICAS International
Competitions
and Assessments
for Schools

DO NOT OPEN THIS BOOKLET UNTIL INSTRUCTED.

STUDENT'S NAME:

Read the instructions on the **ANSWER SHEET** and fill in your **NAME, SCHOOL** and **OTHER INFORMATION**.

Use a 2B or B pencil.

Do **NOT** use a pen.

Rub out any mistakes completely.

You **MUST** record your answers on the **ANSWER SHEET**.

Mark only **ONE** answer for each question.

Your score will be the number of correct answers.

Marks are **NOT** deducted for incorrect answers.

Use the information provided to choose the **BEST** answer from the four possible options.

On your **ANSWER SHEET** fill in the oval that matches your answer.

Questions may sometimes be placed next to each other.

Make sure you read **ACROSS** the page and answer the questions in the correct order.

You are **NOT** allowed to use a dictionary or an electronic translator.

ENGLISH

**Educational
Assessment**

Read *Humpback whales* and answer questions 1 to 8.

Humpback whales



Humpback whales are sometimes called the circus performers of the ocean. This is because they appear to perform acrobatic feats when they dive. The name 'humpback', which is the common name for this whale, refers to the distinctive arch shape the whale's back forms as it dives.

Sometimes the humpback will embellish its dive with a spectacular movement known as a breach. During breaching the whale uses its powerful tail flukes to lift nearly two-thirds of its body out of the water in a giant leap. A breach might also include a sideways twist with fins stretched out like wings, as the whale reaches the height of the breach.

A humpback whale breathes air at the surface of the water through two blowholes which are located near the top of the head. It spouts a double stream of spray that can rise up to 4 metres above the water.

The humpback has a small dorsal fin located towards the tail flukes about two-thirds of the way down its back. Other distinguishing features include large pectoral fins, which may be up to a third of the body length, and unique patches of black and white on the underside of the tail flukes. These markings are like fingerprints: no two are the same.

Humpback whales live in large groups called pods. They communicate with each other through complex 'songs'.

Quick Facts

Humpback Whale

Scientific name:	<i>Megaptera novaeangliae</i>
Size:	14m – 18m in length; 30 – 50 tonnes in weight
Habitat:	open ocean and shallow coastline waters
Migration:	From warm tropical waters, where they breed and calve, to cold polar waters where they eat
Diet:	Krill (shrimp-like crustaceans), plankton and small fish such as herring and mackerel
Hunting:	Sometimes in groups, in which several whales form a circle under the water, blowing bubbles that form a ' <u>net</u> ' around a school of fish. The fish are then forced up to the surface in a concentrated mass.
Status:	Endangered: it is estimated that there are approximately 5 000 – 7 500 humpback whales worldwide.

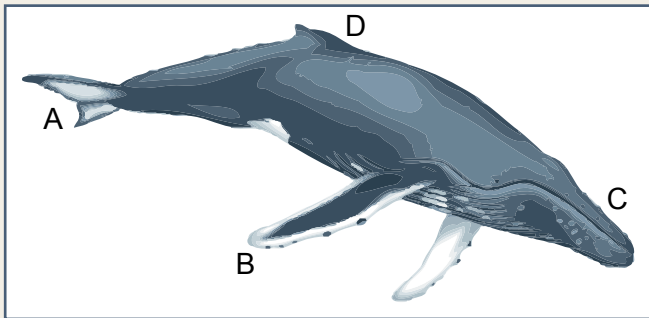
1. One way of identifying a humpback whale is by its

- (A) tail.
- (B) fins.
- (C) dive.
- (D) diet.

2. Based on information in the text, what is a breach?

- (A) a movement of the fin to the side as the humpback dives
- (B) a magnificent diving action that many humpbacks perform
- (C) a movement in which the humpback lifts part of its body out of the water
- (D) a powerful twisting action that helps the humpback to leap out of the water

3. In the diagram, which letter shows the location of the dorsal fin?



4. In the clause 'no two are the same' the word 'two' refers to the humpbacks'

- (A) flukes.
- (B) markings.
- (C) dorsal fins.
- (D) pectoral fins.

5. The words *Megaptera novaeangliae* are written in italics because

- (A) they indicate a scientific name.
- (B) the information is less important.
- (C) the writer wants to draw attention to the information.
- (D) they explain 'humpback whales' in another language.

6. By forming a 'net', humpback whales are able to

- (A) trap many small fish at once.
- (B) protect the pod from predators.
- (C) blow bubbles to help them breathe.

7. Which of the following words from the text is **DIFFERENT** in meaning?

- (A) 'distinctive'
- (B) 'embellish'
- (C) 'distinguishing'
- (D) 'unique'

8. Which of the following is an example of figurative language?

- (A) 'circus performers of the ocean'
- (B) 'shape the whale's back forms'
- (C) 'spouts a double stream of spray'
- (D) 'large group called pods'

For questions 9 and 10 read *The Soccer Team* and choose the best option.

The Soccer Team

Justine spotted Ben's bright red backpack in the distance and ran to catch up to him.

(9) Hi Justine said Ben. 'Where did you come from?'

Justine was so excited, she forgot about answering Ben.

'We've been selected for the school soccer team! I saw the notice up outside the school hall.'

Ben and Justine were so pleased with the news, they treated themselves to an ice-cream.

9. Which option shows the correct punctuation?

- (A) 'Hi Justine' said Ben.
- (B) 'Hi Justine,' said Ben.
- (C) 'Hi Justine', said Ben.
- (D) 'Hi Justine.' said Ben.

10. Which word from the text is a verb?

- (A) 'soccer'
- (B) 'notice'
- (C) 'news'
- (D) 'treated'

THIS PAGE IS MEANT TO BE BLANK.

StudentBounty.com

Acknowledgment

Copyright in this booklet is owned by Educational Assessment Australia, UNSW Global Pty Limited, unless otherwise indicated. Every effort has been made to trace and acknowledge copyright. Educational Assessment Australia apologises for any accidental infringement and welcomes information to redress the situation.

Sources

“Humpback whales” text, image and graphic © EAA 2006.

The following year levels should sit THIS Paper:

Australia	Year 5
Brunei	Primary 5
Hong Kong	Primary 5
Indonesia	Year 6
Malaysia	Standard 5
New Zealand	Year 6
Pacific	Year 5
Singapore	Primary 4
South Africa	Grade 5



UNSW Global
THE UNIVERSITY OF NEW SOUTH WALES
SYDNEY • AUSTRALIA

**Educational
Assessment
Australia**
eaa.unsw.edu.au

© 2010 Educational Assessment Australia.
EAA is an education group of UNSW Global Pty Limited, a not-for-profit provider of education, training and consulting services and a wholly owned enterprise of the University of New South Wales. ABN 62 086 418 582

TO ANSWER THE QUESTIONS

Example:
Choose the word that is closest in meaning to the underlined word.

I want you to give this important matter prompt attention.

- (A) quiet
- (B) careful
- (C) immediate
- (D) deliberate

Immediate is the word closest in meaning to prompt in this sentence, so you would fill in the oval (C), as shown.

(A) (B) (C) (D)



START

- 1 (A) (B) (C) (D)
- 2 (A) (B) (C) (D)
- 3 (A) (B) (C) (D)
- 4 (A) (B) (C) (D)
- 5 (A) (B) (C) (D)
- 6 (A) (B) (C) (D)
- 7 (A) (B) (C) (D)
- 8 (A) (B) (C) (D)
- 9 (A) (B) (C) (D)
- 10 (A) (B) (C) (D)

QUESTION	KEY	DESCRIPTION OF SKILL	AREA	DIFFICULTY
1	B	Interpret information in a factual description	RF	Easy
2	C	Interpret a factual description to provide a definition of a technical term	RF	Medium
3	D	Interpret information in a factual description to label a diagram	RF	Medium
4	B	Identify a pronoun reference in a factual description	SYN	Easy
5	A	Identify the purpose of italic font in a factual description	TD	Medium
6	A	Interpret information in a sidebar in a factual description	RF	Medium
7	B	Identify the word that is different in meaning in a factual description	VOC	Hard
8	A	Identify a figurative use of language in a factual description	TD	Hard
9	B	Identify the correct punctuation for speech	SYN	Medium
10	D	Identify an example of a verb	SYN	Medium

LEGEND

Area refers to the particular curriculum area or strand assessed by the question.

RL Reading – Literary	questions which require students to comprehend and interpret texts such as stories, poems, extracts from novels, reviews, plays
RF Reading – Factual	questions which require students to understand and interpret information and argument texts, including texts which incorporate diagrams, tables and images from a range of curriculum areas, e.g. reports, editorials, advertisements, explanations
TD Textual devices	questions which require students to recognise and to interpret textual devices which include figurative and rhetorical language (e.g. metaphor, rhetorical question, pun) and text conventions (e.g. use of different font sizes and types, captions)
SYN Syntax	questions about accuracy and clarity within sentences or texts (e.g. pronoun reference, tense) and the recognition of grammatical terms (e.g. noun, main clause)
VOC Vocabulary	questions about the meaning of words or phrases

Level of difficulty refers to the expected level of difficulty for the question.

Easy	more than 70% of candidates will choose the correct option
Medium	about 50–70% of candidates will choose the correct option
Medium/Hard	about 30–50% of candidates will choose the correct option
Hard	less than 30% of candidates will choose the correct option