

OXFORD CAMBRIDGE AND RSA EXAMINATIONS
AS GCE
F701
FRENCH
Speaking
ROLE PLAY A

15 MARCH – 15 MAY 2012

MODIFIED ENLARGED

- **This Candidate's Sheet is to be handed to the candidate 20 minutes in advance.**

READ INSTRUCTIONS OVERLEAF

INFORMATION FOR CANDIDATES

- You should use the time available to study the instructions on pages 4 and 5. You may make notes on this sheet, which you should take into the examination room with you.
- When the test begins you will be asked:
 - (i) to carry out the task described on pages 4 and 5
 - (ii) to discuss with the examiner the sub-topic which you have prepared. The topic must refer to France or a French-speaking country.
- You may **NOT** use a dictionary.

There are two sections to this examination:

A Role-play (5-6 mins) [30 Marks]

B Topic discussion (9-10 mins) [30 Marks]

- Candidates may bring into the examination a maximum of one side of A4 notes for the Topic discussion.

BLANK PAGE

ROLE PLAY A – CANDIDATE’S SHEET

NOTE TO THE CANDIDATE: You should begin by asking the two questions. The task can then be completed in the order you prefer. You should base your replies on the English text, but sometimes you will need to use your imagination and initiative to react to the examiner’s comments and questions.

LA SITUATION

Un(e) collègue français(e) de votre mère est venu(e) dîner à la maison.

LA TÂCHE

Vous discutez avec le / la collègue et vous découvrez qu’il / elle voudrait adopter un animal domestique.

D’ABORD VOUS DEVEZ VOUS RENSEIGNER SUR :

1 CE QU’IL / ELLE FAIT EN ANGLETERRE

2 CE QU’IL / ELLE CHERCHE COMME ANIMAL

Vous avez un dépliant sur un refuge pour les animaux et vous pensez que cela pourrait lui être utile. À l'aide du dépliant, vous donnerez des détails sur :

- **l'histoire et l'objectif de Wood Green**
- **la façon de choisir un animal**
- **les animaux plus âgés**
- **le chat cité comme exemple**
- **ce qu'il faut considérer**
- **l'information donnée par le site web**

Au cours de la conversation vous discuterez aussi :

- **des raisons pour lesquelles beaucoup de gens aiment avoir un animal domestique**
- **des raisons pour lesquelles les gens donnent de l'argent aux œuvres de charité**

Wood Green Animal Shelters

Miss Louisa Snow founded Wood Green after the First World War to help abandoned and injured animals. It aims to find loving new homes for 5000 animals each year.



The easiest way to find a new pet is to visit the Shelters. Here you can meet the animals and talk to the friendly, experienced staff about what you want, and ask lots of questions about your potential companion.

Older animals are more difficult to rehome even though they are calmer and can still offer a lot of affection.

Polo, 15, needs a quiet home where he is the only pet and can receive the attention he deserves. His favourite activities are eating, sleeping and watching birds in the garden.



Consider how an animal could become part of your home and lifestyle!

Visit our website www.woodgreen.org.uk to see the complete list of animals available.

Pictures show a dog lying on the stairs and a cat.

Copyright Information

OCR is committed to seeking permission to reproduce all third-party content that it uses in its assessment materials. OCR has attempted to identify and contact all copyright holders whose work is used in this paper. To avoid the issue of disclosure of answer-related information to candidates, all copyright acknowledgements are reproduced in the OCR Copyright Acknowledgements Booklet. This is produced for each series of examinations and is freely available to download from our public website (www.ocr.org.uk) after the live examination series.

If OCR has unwittingly failed to correctly acknowledge or clear any third-party content in this assessment material, OCR will be happy to correct its mistake at the earliest possible opportunity.

For queries or further information please contact the Copyright Team, First Floor, 9 Hills Road, Cambridge CB2 1GE.

OCR is part of the Cambridge Assessment Group; Cambridge Assessment is the brand name of University of Cambridge Local Examinations Syndicate (UCLES), which is itself a department of the University of Cambridge.

OXFORD CAMBRIDGE AND RSA EXAMINATIONS
AS GCE
F701
FRENCH
Speaking
ROLE PLAY B

15 MARCH – 15 MAY 2012

MODIFIED ENLARGED

- **This Candidate's Sheet is to be handed to the candidate 20 minutes in advance.**

READ INSTRUCTIONS OVERLEAF

INFORMATION FOR CANDIDATES

- You should use the time available to study the instructions on pages 4 and 5. You may make notes on this sheet, which you should take into the examination room with you.
- When the test begins you will be asked:
 - (i) to carry out the task described on pages 4 and 5
 - (ii) to discuss with the examiner the sub-topic which you have prepared. The topic must refer to France or a French-speaking country.
- You may **NOT** use a dictionary.

There are two sections to this examination:

A Role-play (5-6 mins) [30 Marks]

B Topic discussion (9-10 mins) [30 Marks]

- Candidates may bring into the examination a maximum of one side of A4 notes for the Topic discussion.

BLANK PAGE

ROLE PLAY B – CANDIDATE’S SHEET

NOTE TO THE CANDIDATE: You should begin by asking the two questions. The task can then be completed in the order you prefer. You should base your replies on the English text, but sometimes you will need to use your imagination and initiative to react to the examiner’s comments and questions.

LA SITUATION

Vous habitez à Bedford. Des Français font un séjour chez vous.

LA TÂCHE

Ils vont fêter leur anniversaire de mariage pendant le séjour et voudraient trouver un restaurant convenable. Vous en discutez avec le père / la mère de la famille.

D’ABORD VOUS DEVEZ VOUS RENSEIGNER SUR :

- 1 LA RÉGION OÙ HABITENT LES FRANÇAIS**
- 2 LE TYPE DE RESTAURANT QU’ILS CHERCHENT**

Vous avez trouvé le site internet d'un restaurant près de chez vous, The Falcon. À l'aide du site internet, vous donnerez des détails sur :

- **le restaurant**
- **la carte**
- **la nourriture**
- **ce qui peut attirer les clients**
- **les occasions spéciales**
- **le site web**

Au cours de la conversation vous discuterez aussi :

- **des raisons pour lesquelles, à votre avis, les gens aiment manger au restaurant**
- **de l'importance de suivre un régime équilibré**



Enjoy dining in the comfort and special atmosphere of this 17th century inn. It has a rich history, and the writer Edward Fitzgerald even wrote a book whilst staying here.

The menu, which changes every week, features traditional English cooking, enhanced with influences from around the world.

All dishes are prepared using fresh ingredients, including locally grown vegetables which travel from the field to your table in less than 12 hours. Customers can savour home-made bread and desserts, including ice-cream and sorbets.

SPECIAL ATTRACTIONS

**Every Thursday: 2 steaks and
1 bottle of wine – only £20**

**You can fish in the river before
or after dining**

**Family area with volleyball
equipment and giant chess set**

The chef can supply wonderful cakes to help you celebrate those special occasions.

Request a romantic table for two on the terrace.

See website for sample menus and to book a table.

Picture shows i) the logo of The Falcon pub

Copyright Information

OCR is committed to seeking permission to reproduce all third-party content that it uses in its assessment materials. OCR has attempted to identify and contact all copyright holders whose work is used in this paper. To avoid the issue of disclosure of answer-related information to candidates, all copyright acknowledgements are reproduced in the OCR Copyright Acknowledgements Booklet. This is produced for each series of examinations and is freely available to download from our public website (www.ocr.org.uk) after the live examination series.

If OCR has unwittingly failed to correctly acknowledge or clear any third-party content in this assessment material, OCR will be happy to correct its mistake at the earliest possible opportunity.

For queries or further information please contact the Copyright Team, First Floor, 9 Hills Road, Cambridge CB2 1GE.

OCR is part of the Cambridge Assessment Group; Cambridge Assessment is the brand name of University of Cambridge Local Examinations Syndicate (UCLES), which is itself a department of the University of Cambridge.

OXFORD CAMBRIDGE AND RSA EXAMINATIONS
AS GCE
F701
FRENCH
Speaking
ROLE PLAY C

15 MARCH – 15 MAY 2012

MODIFIED ENLARGED

- **This Candidate's Sheet is to be handed to the candidate 20 minutes in advance.**

READ INSTRUCTIONS OVERLEAF

INFORMATION FOR CANDIDATES

- You should use the time available to study the instructions on pages 4 and 5. You may make notes on this sheet, which you should take into the examination room with you.
- When the test begins you will be asked:
 - (i) to carry out the task described on pages 4 and 5
 - (ii) to discuss with the examiner the sub-topic which you have prepared. The topic must refer to France or a French-speaking country.
- You may **NOT** use a dictionary.

There are two sections to this examination:

A Role-play (5-6 mins) [30 Marks]

B Topic discussion (9-10 mins) [30 Marks]

- Candidates may bring into the examination a maximum of one side of A4 notes for the Topic discussion.

BLANK PAGE

ROLE PLAY C – CANDIDATE’S SHEET

NOTE TO THE CANDIDATE: You should begin by asking the two questions. The task can then be completed in the order you prefer. You should base your replies on the English text, but sometimes you will need to use your imagination and initiative to react to the examiner’s comments and questions.

LA SITUATION

Vous faites un séjour chez votre correspondant(e) français(e).

LA TÂCHE

Un jour vous discutez avec la mère / le père de votre correspondant(e). Son fils étudie le droit à l’université en France et voudrait faire un stage en Angleterre.

D’ABORD IL FAUT VOUS RENSEIGNER SUR :

- 1 LES DATES PRÉVUES POUR LE STAGE**
- 2 LES RAISONS POUR LESQUELLES IL VOUDRAIT ÉTUDIER EN ANGLETERRE**

Vous pensez qu'un stage d'été à l'Université de Cambridge serait idéal. À l'aide d'un dépliant, vous donnerez des détails sur :

- **le stage**
- **les participants**
- **les cours**
- **l'hébergement**
- **l'accès à l'internet**
- **les activités possibles**

Au cours de la conversation vous discuterez aussi :

- **des choses que vous voudriez faire si vous faisiez un stage à l'étranger et pourquoi**
- **des raisons pour lesquelles les langues étrangères sont importantes**

À noter :

A lawyer – un avocat



Summer School in English Law

This four-week course for students from other countries presents the principal aspects of English law. It has been running since 1948.

The course is suitable both for qualified lawyers and students who have completed at least one year of university study. It attracts about 100 participants each year.

The maximum class size is 15. As all teaching is in English, students must be able to take part in discussions in English.

You can reside at the University for the duration of the course. A bedroom with en-suite bathroom is £1825. If you want to use the internet with your own computer, please download a form from the website and bring it with you.



At weekends you will be free to explore the beautiful city of Cambridge, take a trip on the river or enjoy a picnic in one of the many parks.

The photo shows college buildings and several bicycles.

Copyright Information

OCR is committed to seeking permission to reproduce all third-party content that it uses in its assessment materials. OCR has attempted to identify and contact all copyright holders whose work is used in this paper. To avoid the issue of disclosure of answer-related information to candidates, all copyright acknowledgements are reproduced in the OCR Copyright Acknowledgements Booklet. This is produced for each series of examinations and is freely available to download from our public website (www.ocr.org.uk) after the live examination series.

If OCR has unwittingly failed to correctly acknowledge or clear any third-party content in this assessment material, OCR will be happy to correct its mistake at the earliest possible opportunity.

For queries or further information please contact the Copyright Team, First Floor, 9 Hills Road, Cambridge CB2 1GE.

OCR is part of the Cambridge Assessment Group; Cambridge Assessment is the brand name of University of Cambridge Local Examinations Syndicate (UCLES), which is itself a department of the University of Cambridge.

OXFORD CAMBRIDGE AND RSA EXAMINATIONS
AS GCE
F701
FRENCH
Speaking
ROLE PLAY D

15 MARCH – 15 MAY 2012

MODIFIED ENLARGED

- **This Candidate's Sheet is to be handed to the candidate 20 minutes in advance.**

READ INSTRUCTIONS OVERLEAF

INFORMATION FOR CANDIDATES

- You should use the time available to study the instructions on pages 4 and 5. You may make notes on this sheet, which you should take into the examination room with you.
- When the test begins you will be asked:
 - (i) to carry out the task described on pages 4 and 5
 - (ii) to discuss with the examiner the sub-topic which you have prepared. The topic must refer to France or a French-speaking country.
- You may **NOT** use a dictionary.

There are two sections to this examination:

A Role-play (5-6 mins) [30 Marks]

B Topic discussion (9-10 mins) [30 Marks]

- Candidates may bring into the examination a maximum of one side of A4 notes for the Topic discussion.

BLANK PAGE

ROLE PLAY D – CANDIDATE’S SHEET

NOTE TO THE CANDIDATE: You should begin by asking the two questions. The task can then be completed in the order you prefer. You should base your replies on the English text, but sometimes you will need to use your imagination and initiative to react to the examiner’s comments and questions.

LA SITUATION

Vous travaillez pour une agence de voyages qui organise des visites en Angleterre pour les Français.

LA TÂCHE

Un jour vous discutez avec l’organisateur / l’organisatrice d’un groupe de Français qui voudraient visiter la Grande-Bretagne. Il / elle est venu(e) en Angleterre pour discuter de la visite.

D’ABORD IL FAUT VOUS RENSEIGNER SUR :

- 1 LE NOMBRE DE PERSONNES DANS LE GROUPE**
- 2 LES PRÉFÉRENCES DU GROUPE**

Vous pensez qu'une croisière intéresserait le groupe. À l'aide du dépliant, vous donnerez des détails sur :

- **les avantages des croisières**
- **les bateaux**
- **les excursions**
- **le Grand Tour**
- **les services supplémentaires**
- **le site web**

Au cours de la conversation vous discuterez aussi :

- **des avantages et des inconvénients d'une croisière**
- **de l'importance des vacances**



Imagine waking up each morning to a brand new view. No worry about making hotel reservations or finding the right restaurant.



The ships offer the same standard that you would expect from a land-based holiday and more, including a choice of restaurants and wonderful shows. With a huge range of facilities on board, you scarcely need step ashore!

At each destination, you can leave the ship and join a guided excursion where you will be taken by coach to all the best attractions.

**The Grand Tour of
the British Isles
begins and ends
at Southampton.
Experience and enjoy
the atmosphere of
many different ports!**

**Prices start at £1234
per person based on
two people sharing a
room.**

**If you have
something special to
celebrate, such as a
birthday or wedding
anniversary, why
not book chocolates
and flowers, or a
champagne breakfast,
on the morning of your
choice.**

See our website for more information

The photo shows a man and woman looking happy.

Copyright Information

OCR is committed to seeking permission to reproduce all third-party content that it uses in its assessment materials. OCR has attempted to identify and contact all copyright holders whose work is used in this paper. To avoid the issue of disclosure of answer-related information to candidates, all copyright acknowledgements are reproduced in the OCR Copyright Acknowledgements Booklet. This is produced for each series of examinations and is freely available to download from our public website (www.ocr.org.uk) after the live examination series.

If OCR has unwittingly failed to correctly acknowledge or clear any third-party content in this assessment material, OCR will be happy to correct its mistake at the earliest possible opportunity.

For queries or further information please contact the Copyright Team, First Floor, 9 Hills Road, Cambridge CB2 1GE.

OCR is part of the Cambridge Assessment Group; Cambridge Assessment is the brand name of University of Cambridge Local Examinations Syndicate (UCLES), which is itself a department of the University of Cambridge.

OXFORD CAMBRIDGE AND RSA EXAMINATIONS
AS GCE
F701
FRENCH
Speaking
ROLE PLAY E

15 MARCH – 15 MAY 2012

MODIFIED ENLARGED

- **This Candidate's Sheet is to be handed to the candidate 20 minutes in advance.**

READ INSTRUCTIONS OVERLEAF

INFORMATION FOR CANDIDATES

- You should use the time available to study the instructions on pages 4 and 5. You may make notes on this sheet, which you should take into the examination room with you.
- When the test begins you will be asked:
 - (i) to carry out the task described on pages 4 and 5
 - (ii) to discuss with the examiner the sub-topic which you have prepared. The topic must refer to France or a French-speaking country.
- You may **NOT** use a dictionary.

There are two sections to this examination:

A Role-play (5-6 mins) [30 Marks]

B Topic discussion (9-10 mins) [30 Marks]

- Candidates may bring into the examination a maximum of one side of A4 notes for the Topic discussion.

BLANK PAGE

ROLE PLAY E – CANDIDATE’S SHEET

NOTE TO THE CANDIDATE: You should begin by asking the two questions. The task can then be completed in the order you prefer. You should base your replies on the English text, but sometimes you will need to use your imagination and initiative to react to the examiner’s comments and questions.

LA SITUATION

Vous habitez à Birmingham. Des Français font un séjour chez vous.

LA TÂCHE

C’est leur première visite en Angleterre et ils voudraient faire des excursions. Vous en discutez avec la mère / le père de la famille.

D’ABORD IL FAUT VOUS RENSEIGNER SUR :

- 1 LES INTÉRÊTS DES ENFANTS**
- 2 CE QUE LA FAMILLE FAIT NORMALEMENT LE WEEK-END**

Vous pensez que la famille apprécierait une visite à un musée des transports. À l'aide du dépliant, vous donnerez des détails sur :

- **l'histoire du musée**
- **ce qu'il y a à voir**
- **les tarifs**
- **les heures d'ouverture**
- **la situation du musée**
- **les autres services fournis par le musée**

Au cours de la conversation vous discuterez aussi :

- **des raisons pour lesquelles, à votre avis, de telles visites sont populaires**
- **des avantages et des inconvénients des transports publics**

The TRANSPORT Museum WYTHALL

The museum began in 1964 with the preservation of old buses and coaches. In recent years the site has expanded with the addition of a car park, a little train and a café. Visitors may eat their own food in a designated picnic area.

The three exhibition halls hold about 100 vehicles. One section traces the development of buses in the twentieth century, and in the other two you can see volunteers restoring the collections.



Prices

Adults £4

Children £2

Discounts for families

Opening times

Saturday and Sunday 11.00 – 4.30

On weekends with special events opening times may vary – see website for details.

Last admission is 30 minutes before closing time.

The museum is easily accessible from Birmingham by road. Wythall railway station is a pleasant 25-minute walk away.

Vehicles can be hired for special occasions such as birthdays. For group visits the museum can provide refreshments and an expert guide.

Photo shows people looking at several old buses and coaches.

Copyright Information

OCR is committed to seeking permission to reproduce all third-party content that it uses in its assessment materials. OCR has attempted to identify and contact all copyright holders whose work is used in this paper. To avoid the issue of disclosure of answer-related information to candidates, all copyright acknowledgements are reproduced in the OCR Copyright Acknowledgements Booklet. This is produced for each series of examinations and is freely available to download from our public website (www.ocr.org.uk) after the live examination series.

If OCR has unwittingly failed to correctly acknowledge or clear any third-party content in this assessment material, OCR will be happy to correct its mistake at the earliest possible opportunity.

For queries or further information please contact the Copyright Team, First Floor, 9 Hills Road, Cambridge CB2 1GE.

OCR is part of the Cambridge Assessment Group; Cambridge Assessment is the brand name of University of Cambridge Local Examinations Syndicate (UCLES), which is itself a department of the University of Cambridge.

OXFORD CAMBRIDGE AND RSA EXAMINATIONS
AS GCE
F701
FRENCH
Speaking
ROLE PLAY F

15 MARCH – 15 MAY 2012

MODIFIED ENLARGED

- **This Candidate's Sheet is to be handed to the candidate 20 minutes in advance.**

READ INSTRUCTIONS OVERLEAF

INFORMATION FOR CANDIDATES

- You should use the time available to study the instructions on pages 4 and 5. You may make notes on this sheet, which you should take into the examination room with you.
- When the test begins you will be asked:
 - (i) to carry out the task described on pages 4 and 5
 - (ii) to discuss with the examiner the sub-topic which you have prepared. The topic must refer to France or a French-speaking country.
- You may NOT use a dictionary.

There are two sections to this examination:

A Role-play (5-6 mins) [30 Marks]

B Topic discussion (9-10 mins) [30 Marks]

- Candidates may bring into the examination a maximum of one side of A4 notes for the Topic discussion.

BLANK PAGE

ROLE PLAY F – CANDIDATE’S SHEET

NOTE TO THE CANDIDATE: You should begin by asking the two questions. The task can then be completed in the order you prefer. You should base your replies on the English text, but sometimes you will need to use your imagination and initiative to react to the examiner’s comments and questions.

LA SITUATION

Un(e) collègue québécois(e) de votre père est venu(e) dîner à la maison.

LA TÂCHE

Vous discutez avec le / la collègue et vous découvrez que sa fille voudrait devenir mannequin.

D’ABORD VOUS DEVEZ VOUS RENSEIGNER SUR :

- 1 LA DATE DE SON RETOUR AU CANADA**
- 2 CE QUE LES ENFANTS VONT FAIRE**

Vous avez un dépliant sur les services d'une société qui donne des conseils pratiques aux futurs mannequins et vous pensez que cela pourrait lui être utile. À l'aide du dépliant, vous donnerez des détails sur :

- **la société UK Models**
- **les services proposés**
- **le stage**
- **les jeunes mannequins**
- **les avantages de la profession de mannequin**
- **les inconvénients**

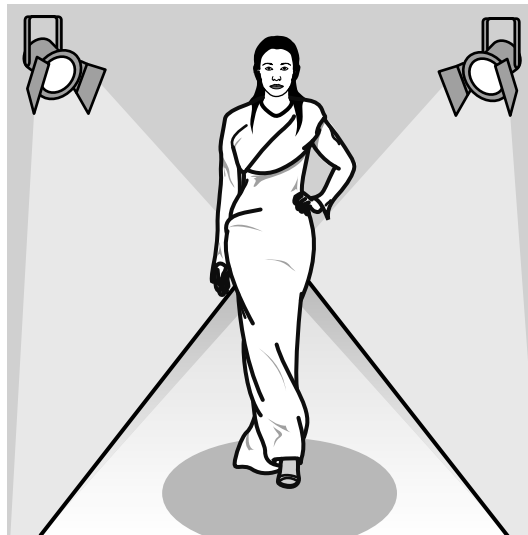
Au cours de la conversation vous discuterez aussi :

- **des raisons pour lesquelles certains jeunes rêvent d'être mannequins**
- **de l'importance de faire un bon choix de carrière**



UK Models has over 8 years' experience of helping young people to achieve their dream. It is not an agency as it does not find you work. It will help you to decide which type of modelling is right for you, and what type of agency you need.

It offers a range of services, such as organising your collection of photos and creating a website.



2-day course

- **How to walk like a model**
- **Advice on clothes**
- **Help with interviews**
- **Session with professional photographer**

Child protection is a priority. Any models under 18 must be accompanied by a parent, as they will make more objective decisions with parental support.

Modelling can be reasonably well-paid for part-time work and will help develop young people's confidence. However, extensive travel can be required, and the profession is so competitive that models must be able to accept rejection.

Pictures show i) the UK Models logo of a slim female model

ii) a woman in a sari walking along the catwalk under the spotlights

Copyright Information

OCR is committed to seeking permission to reproduce all third-party content that it uses in its assessment materials. OCR has attempted to identify and contact all copyright holders whose work is used in this paper. To avoid the issue of disclosure of answer-related information to candidates, all copyright acknowledgements are reproduced in the OCR Copyright Acknowledgements Booklet. This is produced for each series of examinations and is freely available to download from our public website (www.ocr.org.uk) after the live examination series.

If OCR has unwittingly failed to correctly acknowledge or clear any third-party content in this assessment material, OCR will be happy to correct its mistake at the earliest possible opportunity.

For queries or further information please contact the Copyright Team, First Floor, 9 Hills Road, Cambridge CB2 1GE.

OCR is part of the Cambridge Assessment Group; Cambridge Assessment is the brand name of University of Cambridge Local Examinations Syndicate (UCLES), which is itself a department of the University of Cambridge.