

**Advanced Subsidiary GCE
CLASSICAL GREEK**

Literature 1 (Commentary)

SOPHOCLES

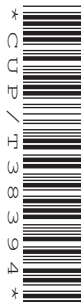
THURSDAY 24 MAY 2007

2978

Afternoon

Time: 1 hour

Additional materials: Answer Booklet (8 pages)



INSTRUCTIONS TO CANDIDATES

- Write your name, Centre number and candidate number in the spaces provided on the answer booklet.
- Write your answers in the separate answer booklet provided.
- Answer **both** questions.
- Candidates are advised to spend **no more** than 30 minutes on **each** question.

INFORMATION FOR CANDIDATES

- The number of marks for each question is given in brackets [] at the end of each question or part question.
- The total number of marks for this Paper is 120.

ADVICE TO CANDIDATES

- Read each question carefully and make sure you know what you have to do before starting your answer.

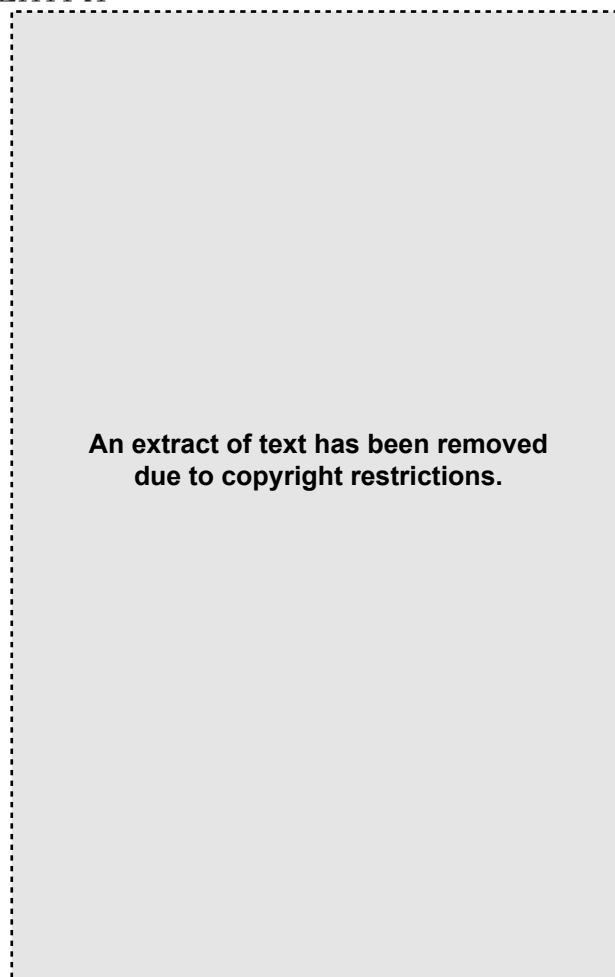
This document consists of **4** printed pages.

Answer **both** questions.

Group C: Tragedy

- 1 Answer the questions on the following passage:

ΗΛΕΚΤΡΑ



5

10

15

20

25

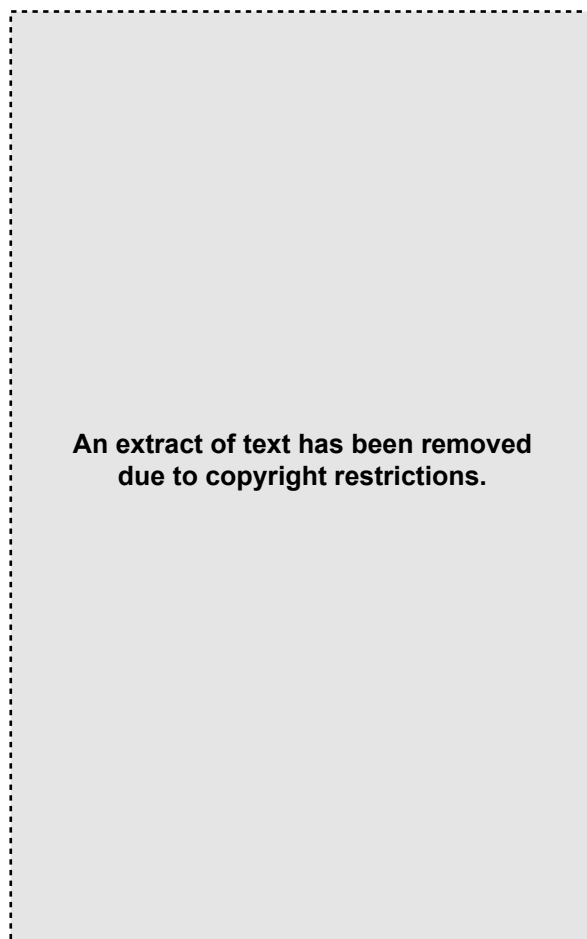
SOPHOCLES, *Electra* 582–609

- (a) From the speeches preceding this passage, summarise in your own words the excuses Clytemnestra has given for murdering her husband. [9]
- (b) Lines 1–13 (εἰ γὰρ κτενοῦμεν . . . τῆς θυγατρὸς οὐνεκα): to what crimes of Clytemnestra does Electra refer, and what accusations does she make, in these lines? Identify and discuss **three** examples, referring closely to the Greek in your answer. [15]
- (c) Lines 14–28 (ἀλλ' οὐ γὰρ . . . οὐ καταισχύνω φύσιν): Clytemnestra has claimed that Electra is slandering her mother. Show how in these lines Electra defends herself by launching an effective counter-attack. You should make close reference **both** to the content **and** to the style of the Greek, and support your discussion with **at least four examples** from the text. [30]

[Quality of Written Communication: 6]

[Total: 54 + 6 = 60]

2 Answer the questions on the following passage:

ΗΛΕΚΤΡΑ

5

10

15

20

25

SOPHOCLES, *Electra* 948–974

- (a) Lines 1–19 (*παρουσίαν . . . σαφή*): how does Electra try to persuade Chrysothemis to join her in her plot? You should refer **both** to the points that she makes **and** to the forcefulness of the language which she uses to make them. Support your discussion with **at least four examples** from the text. [30]
- (b) Lines 20–27 (*ἀλλ' ἤν' ἐπίσπῃ . . . πεισθεῖς' ἐμοί*): what benefits does Electra promise Chrysothemis if she joins in her plan? Identify and discuss **three** benefits, referring closely to the Greek in your answer. [15]
- (c) Briefly summarise the reply that Chrysothemis gives to Electra's speech. [9]

[Quality of Written Communication: 6]

[Total: 54 + 6 = 60]

Permission to reproduce items where third-party owned material protected by copyright is included has been sought and cleared where possible. Every reasonable effort has been made by the publisher (OCR) to trace copyright holders, but if any items requiring clearance have unwittingly been included, the publisher will be pleased to make amends at the earliest possible opportunity.

OCR is part of the Cambridge Assessment Group. Cambridge Assessment is the brand name of University of Cambridge Local Examinations Syndicate (UCLES), which is itself a department of the University of Cambridge.