



ADVANCED GCE

BIOLOGY

Mammalian Physiology and Behaviour

2805/05

INSERT

Wednesday 17 June 2009
Afternoon

Duration: 1 hour 30 minutes



INSTRUCTIONS TO CANDIDATES

- This Insert contains Fig. 2.1.

INFORMATION FOR CANDIDATES

- This document consists of **2** pages. Any blank pages are indicated.

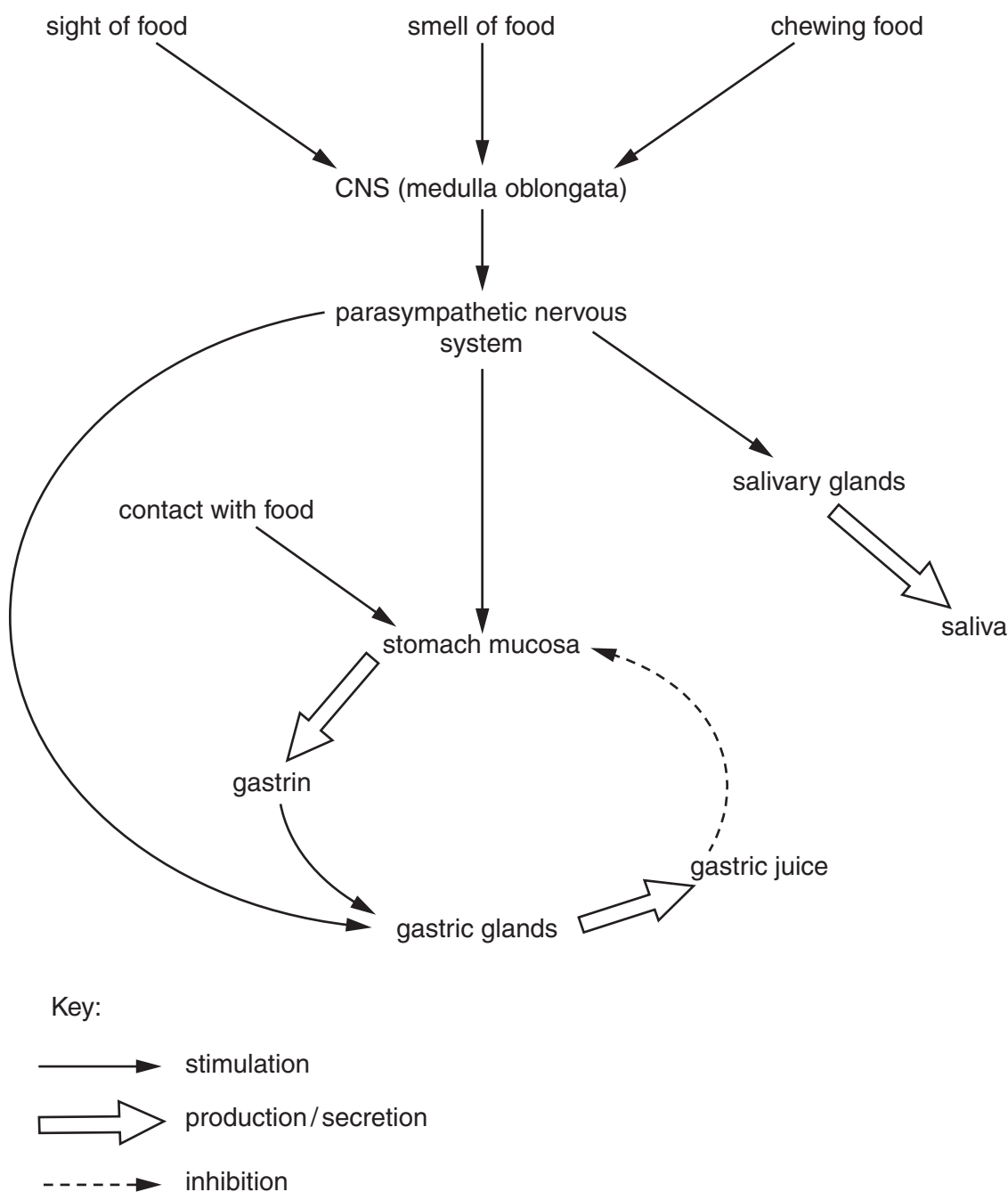


Fig. 2.1

Copyright Information

OCR is committed to seeking permission to reproduce all third-party content that it uses in its assessment materials. OCR has attempted to identify and contact all copyright holders whose work is used in this paper. To avoid the issue of disclosure of answer-related information to candidates, all copyright acknowledgements are reproduced in the OCR Copyright Acknowledgements Booklet. This is produced for each series of examinations, is given to all schools that receive assessment material and is freely available to download from our public website (www.ocr.org.uk) after the live examination series.

If OCR has unwittingly failed to correctly acknowledge or clear any third-party content in this assessment material, OCR will be happy to correct its mistake at the earliest possible opportunity.

For queries or further information please contact the Copyright Team, First Floor, 9 Hills Road, Cambridge CB2 1PB.

OCR is part of the Cambridge Assessment Group; Cambridge Assessment is the brand name of University of Cambridge Local Examinations Syndicate (UCLES), which is itself a department of the University of Cambridge.