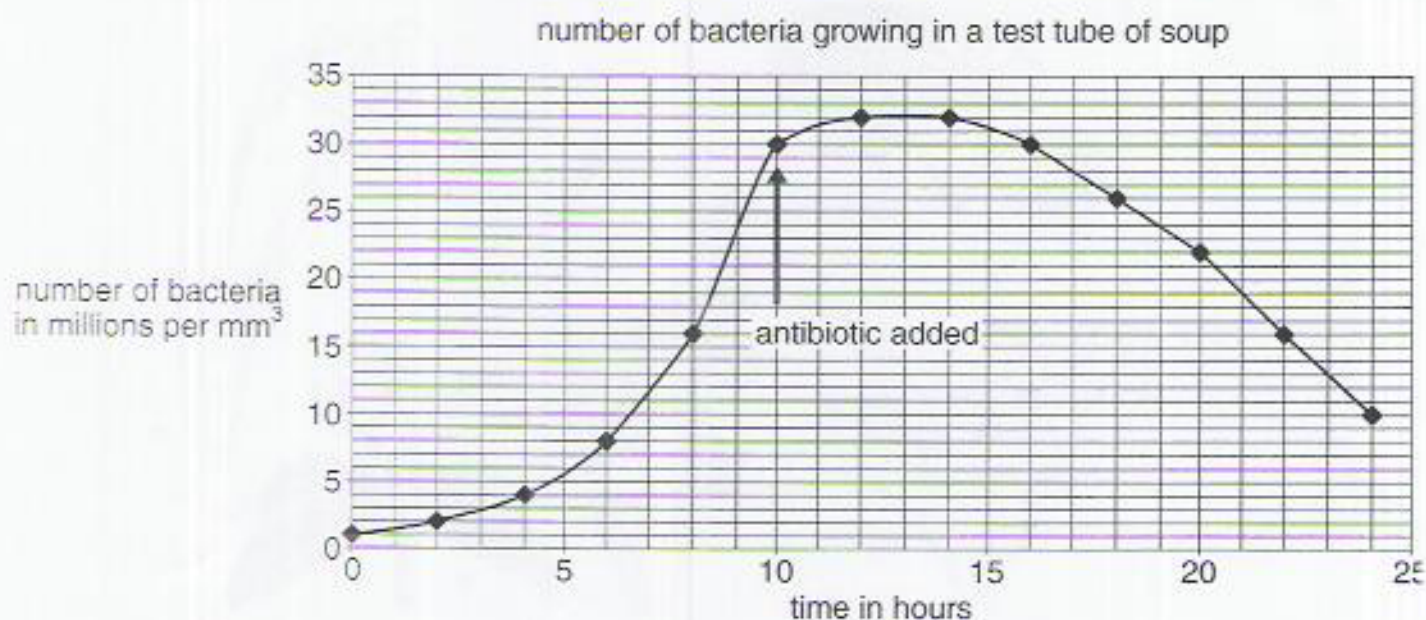


7. The growth of a population of bacteria in a tube of warm beef soup was measured for a twenty-four-hour period. The results are given in the graph below.



- (a) Describe the changes in the growth of the population of bacteria during the first ten hours of the experiment.

.....

.....

.....

(2)

- (b) Name two factors in the experiment which will help the bacteria to grow quickly.

factor one:

(1)

factor two:

(1)

After ten hours, an antibiotic was added to the tube.

- (c) Describe the changes to the growth of the population of bacteria for the ten hours after the antibiotic was added.

.....

.....

.....

.....

(3)